



Hy-Tec Industries Pty Limited

ABN: 90 070 100 702

Austen Quarry

**Transport
Management Plan**

August 2019



Prepared by:

R.W. CORKERY & CO. PTY. LIMITED



This page has intentionally been left blank



Hy-Tec Industries Pty Limited

ABN: 90 070 100 702

Austen Quarry

Traffic Management Plan

Prepared for:

Hy-Tec Industries Pty Limited
ABN: 90 070 100 702
Unit 4 Gateway Business Park
63-79 Parramatta Road
SILVERWATER NSW 2128

Telephone: (02) 9647 2866
Fax: (02) 9647 2924
Email: darryl.thiedeke@hy-tec.com.au

Prepared by:

R.W. Corkery & Co. Pty. Limited
Geological & Environmental Consultants
ABN: 31 002 033 712

Brooklyn Office:

1st Floor, 12 Dangar Road
PO Box 239
BROOKLYN NSW 2083

Telephone: (02) 9985 8511
Email: brooklyn@rwcorkery.com

Orange Office:

62 Hill Street
ORANGE NSW 2800

Telephone: (02) 6362 5411
Email: orange@rwcorkery.com

Brisbane Office:

Suite 5, Building 3
Pine Rivers Office Park
205 Leitchs Road
BRENDAL QLD 4500

Telephone: (07) 3205 5400
Email: brisbane@rwcorkery.com

Ref No. 652/41d

August 2019



R.W. CORKERY & CO. PTY. LIMITED

Document Control

Document Title	Transport Management Plan 2019		
Document No.	652/41d		
Version	Issued by – Date	Distributed to	Comments Rec'd from – Date
Version 1	D. Reed, N. Warren – 15 June 2016	M. Hollis (DPE)	H. Reed (DPE) – 10 August 2016
Version 1 Final	D. Reed – October 2016	M. Hollis (DPE)	M. Hollis – 22 November 2016
Version 2	N. Warren – 30 November 2018	M. Hollis (DPE)	M. Hollis 4 December 2018
Version 2 Final	N. Warren – 4 December 2018	M. Hollis (DPE)	
Version 3	N. Warren – 30 July 2019	M. Anderson (DPIE)	
Final	Approved by:	Howard Reed	Date: 23/08/2019

This Copyright is included for the protection of this document

<p>COPYRIGHT</p> <p>© R.W. Corkery & Co. Pty Limited 2019 and © Hy-Tec Industries Pty Limited 2019</p> <p>All intellectual property and copyright reserved.</p> <p>Apart from any fair dealing for the purpose of private study, research, criticism or review, as permitted under the Copyright Act, 1968, no part of this report may be reproduced, transmitted, stored in a retrieval system or adapted in any form or by any means (electronic, mechanical, photocopying, recording or otherwise) without written permission. Enquiries should be addressed to R.W. Corkery & Co. Pty Limited.</p>

CONTENTS

	Page
LIST OF ACRONYMS.....	V
1. INTRODUCTION.....	1
2. LEGISLATIVE REQUIREMENTS.....	1
2.1 DEVELOPMENT CONSENT SSD 6084.....	1
2.2 ENVIRONMENT PROTECTION LICENCE 12323.....	5
2.3 STATEMENT OF COMMITMENTS.....	5
3. OBJECTIVES AND OUTCOMES.....	5
4. LOCAL SETTING	6
4.1 SITE LOCATION.....	6
4.2 QUARRY OPERATIONS	6
4.3 ROAD NETWORK	6
4.3.1 Quarry Access Road.....	6
4.3.2 Jenolan Caves Road.....	6
4.3.3 Great Western Highway	8
5. POTENTIAL TRAFFIC IMPACTS	8
6. TRANSPORT AND TRAFFIC LIMITS AND REQUIREMENTS.....	8
6.1 TRANSPORT LIMITS	8
6.2 PERFORMANCE INDICATORS.....	9
7. TRANSPORT AND TRAFFIC MANAGEMENT SYSTEM	9
7.1 PROACTIVE MANAGEMENT MEASURES	9
7.1.1 Operating Hours.....	9
7.1.2 Truck Speed at Glenroy Bridge.....	10
7.1.3 Laden Truck Movements Monitoring.....	10
7.1.4 Driver's Code of Conduct.....	11
7.1.5 Driver Vehicle Check.....	11
7.1.6 Unintentional Tracking of Accumulated Material Off-Site	12
7.2 REACTIVE MANAGEMENT MEASURES	12
7.2.1 Triggers	12
7.2.2 Response and Corrective Actions.....	12
8. TRANSPORT AND TRAFFIC MONITORING	14
8.1 VEHICLE PASS CARDS	14
8.2 PERIODIC CHECKS.....	14
8.3 INTERSECTION PERFORMANCE	14
9. COMPLAINTS HANDLING AND RESPONSE	14

CONTENTS

	Page
10. INCIDENT MANAGEMENT, NOTIFICATION AND REPORTING	15
10.1 INCIDENT MANAGEMENT AND NOTIFICATION	15
10.1.1 Pollution Incident	15
10.1.2 Non-Compliance Incident.....	15
10.2 INCIDENT REPORTING	16
11. DOCUMENTATION, NOTIFICATIONS AND REPORTING	16
12. ROLES AND RESPONSIBILITIES.....	16
13. COMPETENCE TRAINING AND AWARENESS	17
14. PLAN REVIEW AND CONTINUOUS IMPROVEMENT PROTOCOL.....	17
14.1 PLAN REVIEW.....	17
14.2 ADAPTIVE MANAGEMENT AND CONTINUOUS IMPROVEMENT.....	17
15. REFERENCES.....	17

APPENDICES

Annexure 1 Driver's Code of Conduct	19
Annexure 2 Driver-Vehicle Check Inspection Sheet	23

FIGURES

Figure 1 Approved Stage 2 Site Layout	2
Figure 2 Local Setting and Road Network.....	7

TABLES

Table 1 Traffic Management Related Approval Conditions Matrix of SSD-6084.....	3
Table 2 Traffic and Transport Related Commitments of the Final Statement of Commitments	5
Table 3 Objectives and Outcomes	5
Table 4 Operating Hours	10
Table 5 Roles and Responsibilities – Transport and Traffic Management	16

LIST OF ACRONYMS

DPIE	Department of Planning, Industry and Environment
EIS	Environmental Impact Statement
EPA	Environment Protection Authority
EPL	Environment Protection Licence
LEP	Local Environmental Plan
RWC	R.W. Corkery & Co. Pty Limited
SSD	State Significant Development

This page has intentionally been left blank



1. INTRODUCTION

The Austen Quarry Transport Management Plan (“the Plan”) has been prepared to satisfy *Condition 23* of Schedule 3 of Development Consent SSD 6084 (SSD-6084) and as an operational tool to assist in the management of transport related issues during the operation of the Austen Quarry (“the Quarry”). It will be used by Hy-Tec Industries Pty Limited (Hy-Tec) personnel as the first point of reference for transport-related issues.

This plan synthesises the recommendations made during the assessments undertaken for the Stage 2 development of the Quarry which was approved in July 2015 and a subsequent modification to SSD 6084 approved in August 2018. The most recent assessment of predicted air quality-related impacts associated with the Stage 2 development of the Quarry is provided in the Statement of Environmental Effects (RWC, 2018) and Road Transport Assessment (TTPP, 2018).

The approved layout of the Quarry is displayed in **Figure 1**. The land within the approved site boundary is referred to as the Quarry Site. The construction and development of Stage 2 of the Quarry will involve an increase in depth and lateral extension of the Stage 1 extraction area along an adjacent southwest-northeast trending ridge and a lateral extension and elevation of the existing overburden emplacement. SSD 6084 was modified in August 2018 and in July 2019.

Transport activities principally relate to operational activities required for the delivery and despatch of Quarry products from the Quarry to its customers.

2. LEGISLATIVE REQUIREMENTS

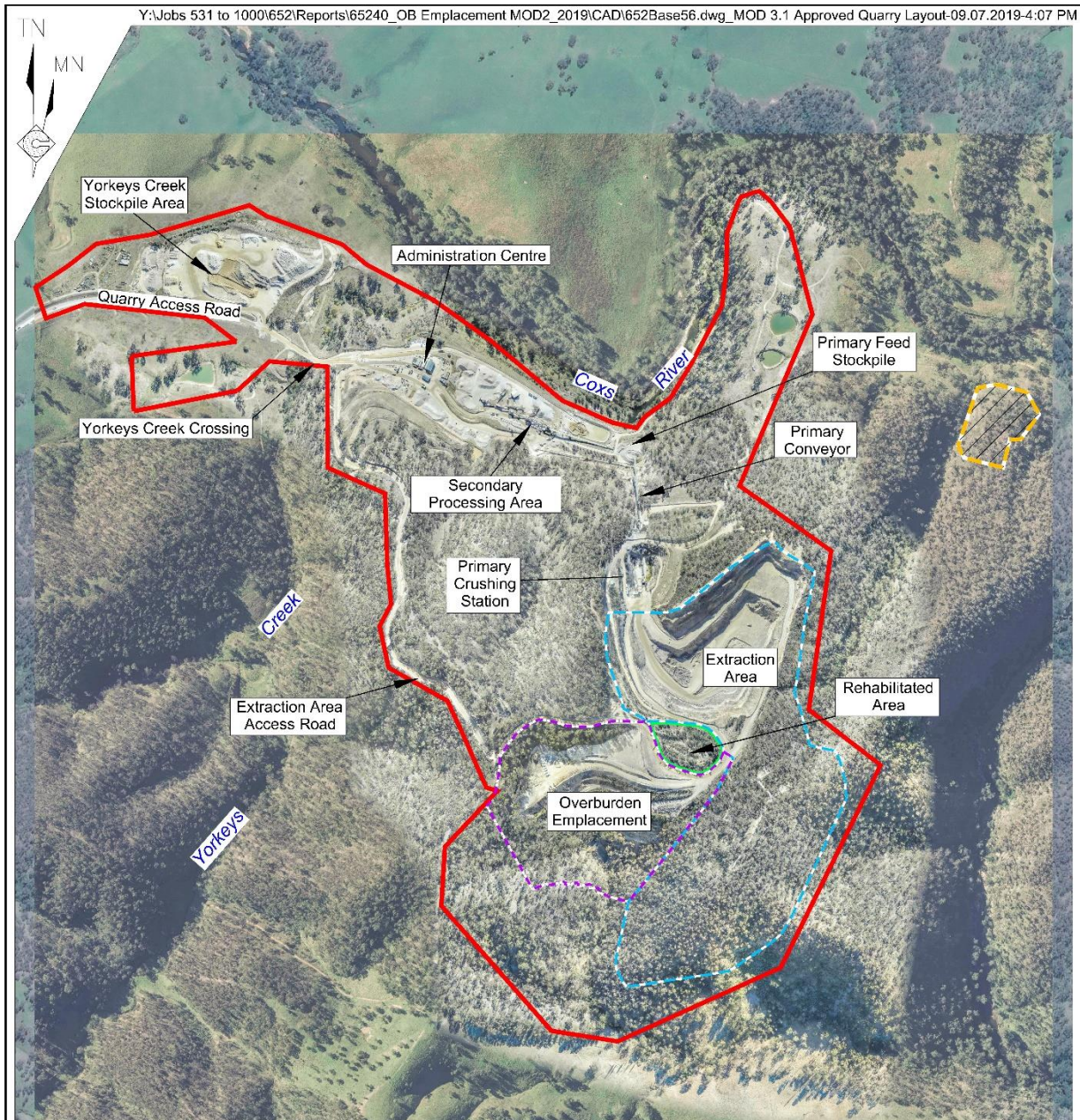
Transport management at the Quarry Site is principally guided by the following sources.

- The relevant conditions of consent provided in SSD 6084.
- The relevant conditions of Environmental Protection Licence 12323.
- The commitments made in the planning documents that are summarised in the Statement of Commitments (Appendix 3 of SSD 6084).

The following subsections summarise the relevant transport-related conditions and commitments that are addressed in this plan.

2.1 DEVELOPMENT CONSENT SSD 6084

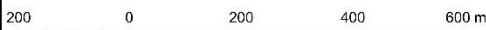
Transport activities at the Quarry is undertaken in accordance with Conditions 21 to 23 of Schedule 3 of SSD 6084. In addition, Condition 8 of Schedule 2, details the conditions under which extractive materials may be transported from the Quarry. More general requirements for the preparation of management plans are also provided by Condition 2 of Schedule 5 of SSD 6084, while Condition 5 and Condition 6 of Schedule 3 relate to incident and management and reporting requirements that influence noise management.



Note: Some boundaries are coincident

- REFERENCE
- Quarry Site Boundary
 - Extraction Area Boundary
 - Overburden Emplacement Area Boundary
 - Rehabilitated Area (Offset for Clarity)
 - Conservation Area H

SCALE (A4)



Quarry Plan Source: Groundwork Plus - January 2019
 Base Photograph Source: CEH Survey - May 2017 & Google Earth - October 2016 (surrounds)

Figure 1
 APPROVED QUARRY SITE LAYOUT

Table 1 identifies the conditional requirements of transport-related conditions and where in the Plan individual requirements have been addressed.

Table 1
Traffic Management Related Approval Conditions Matrix of SSD-6084

Page 1 of 2

Condition	Section
Schedule 2	
<p>Condition 8 – Extractive Material Transport</p> <p>The Applicant must not:</p> <ul style="list-style-type: none"> • transport more than 1.6 million tonnes of quarry products from the site during any financial year; • despatch more than 300 laden trucks from the site on weekdays and 167 laden trucks from the site on Saturdays; and • despatch more than 200 laden trucks from the site per weekday, averaged over the total number of despatch weekdays in any calendar month. 	8.1
Schedule 3	
<p>Condition 23 – Transport Management Plan</p> <p>The Applicant must prepare and implement a Transport Management Plan for the development to the satisfaction of the Secretary. This plan must:</p> <p>(a) be submitted to the Secretary for approval at least 3 months prior to the commencement of quarrying operations under this consent, unless otherwise agreed by the Secretary;</p> <p>(b) describe the measures that would be undertaken to monitor the intersection performance at the Jenolan Caves Road and Great Western Highway intersection and maintain an acceptable level of service at this intersection;</p> <p>(c) include a Driver's Code of Conduct that includes:</p> <ul style="list-style-type: none"> – details of the safe and quiet driving practices that must be used by drivers travelling to and from the quarry, with a particular focus on the morning shoulder period; – a map of the primary haulage route; – safety initiatives for haulage during peak periods and along school bus routes; – an induction process for vehicle operators and regular toolbox meetings; and – complaints resolution and disciplinary procedures; <p>(d) describe the measures that would be put in place to ensure compliance with the Driver's Code of Conduct.</p> <p>The Applicant must implement the Transport Management Plan as approved by the Secretary.</p>	<p>2.1</p> <p>8.3</p> <p>App 1</p> <p>8.2</p>
<p>Condition 21 – Monitoring of Product Transport</p> <p>The Applicant must keep accurate records of all laden truck movements to and from site (hourly, daily, weekly, monthly and annually) and publish a summary of records on its website every 6 months.</p>	8
<p>Condition 22 – Operating Conditions</p> <p>The Applicant must ensure that:</p>	
<p>(a) all reasonable measures are taken such that laden trucks have appropriate signage, including a contact phone number, so they can easily be identified by road users;</p>	7.1.3 and App 1
<p>(b) all laden trucks entering or exiting the site have their loads covered;</p>	7.1.3 and App 1
<p>(c) all laden trucks exiting the site are cleaned of material that may fall on the road, before leaving the site; and</p>	7.1.5
<p>(d) no trucks queue at the entrance to the quarry access road before 4:00am on weekdays and 5am on Saturday.</p>	7.1.1
<p>Condition 22A.</p> <p>In 2022, and every 2 years thereafter, unless RMS directs otherwise, the Applicant must, in consultation with RMS, undertake monitoring of intersection performance at the Jenolan Caves Road and Great Western Highway intersection. Within 2 months of completing this monitoring, the results must be provided to RMS.</p>	8.3

Table 1 (Cont'd)
Traffic Management Related Approval Conditions Matrix of SSD-6084

Page 2 of 2

Condition	Section
Schedule 5	
<p>Condition 2 – Management Plan Requirements</p> <p>The Applicant must ensure that the management plans required under this consent are prepared in accordance with any relevant guidelines, and include:</p> <p>a) a summary of relevant background or baseline data;</p> <p>b) a description of:</p> <ul style="list-style-type: none"> – the relevant statutory requirements (including any relevant approval, licence or lease conditions); – any relevant limits or performance measures/criteria; and – the specific performance indicators that are proposed to be used to judge the performance of, or guide the implementation of, the development or any management measures; <p>c) a description of the measures that would be implemented to comply with the relevant statutory requirements, limits, or performance measures/criteria;</p>	<p>N/A</p> <p>2</p> <p>6</p> <p>6</p> <p>7</p>
<p>d) a program to monitor and report on the:</p> <ul style="list-style-type: none"> – impacts and environmental performance of the development; and – effectiveness of any management measures (see (c) above); <p>e) a contingency plan to manage any unpredicted impacts and their consequences and to ensure that ongoing impacts reduce to levels below relevant impact assessment criteria as quickly as possible;</p> <p>f) a program to investigate and implement ways to improve the environmental performance of the development over time;</p> <p>g) a protocol for managing and reporting any:</p> <ul style="list-style-type: none"> – incidents; – complaints – non-compliances with statutory requirements; and – exceedances of the impact assessment criteria and/or performance criteria; and <p>h) a protocol for periodic review of the plan.</p> <p><i>Note: The Secretary may waive some of these requirements if they are unnecessary or unwarranted for particular management plans.</i></p>	<p>N/A</p> <p>8</p> <p>7.2.2</p> <p>14.2</p> <p>7.2.2</p> <p>9</p> <p>10.1.2</p> <p>10.1.2</p> <p>14</p>
<p>Condition 5 – Revisions of Strategies, Plans & Programs</p> <p>Within 3 months of the submission of an:</p> <p>a) annual review under condition 4 above;</p> <p>b) incident report under condition 6 below;</p> <p>c) audit report under condition 8 below; and</p> <p>d) any modifications to this consent,</p> <p>the Applicant must review the strategies, plans and programs required under this consent, to the satisfaction of the Secretary. Where this review leads to revisions in any such document, then within 4 weeks of the review the revised document must be submitted for the approval of the Secretary.</p> <p><i>Note: The purpose of this condition is to ensure that strategies, plans and programs are regularly updated to incorporate any measures recommended to improve environmental performance of the development.</i></p>	<p>14</p>
<p>Condition 6 – Incident Reporting</p> <p>The Applicant must immediately notify the Secretary and any other relevant agencies of any incident. Within 7 days of the date of the incident, the Applicant must provide the Secretary and any relevant agencies with a detailed report on the incident, and such further reports as may be requested.</p>	<p>7.2.2, 10.1.2</p>

2.2 ENVIRONMENT PROTECTION LICENCE 12323

Condition L6 of Environment Protection Licence (EPL) 12323 refers to operating hours for product loading and despatch.

Conditions of EPL 12323 that relate to transport management will be updated in accordance with any variations arising from SSD 6084.

2.3 STATEMENT OF COMMITMENTS

The final Statement of Commitments is included as *Appendix 3* of SSD-6084. Transport and traffic-related commitments have been identified in **Table 2**.

Table 2
Traffic and Transport Related Commitments of the Final Statement of Commitments

Desired Outcome	Action	Section
Transport operations are undertaken with minimal impact on other road users and residents	5.1 All transport contractors required to complete the Hy-Tec Chain of Responsibility: Driver Vehicle Check system.	Appendix 1
	5.2 Maintain a complaints management system to appropriately respond to any complaints received through investigation and implementation of corrective treatments.	9
	5.3 Monitor the delays for vehicles turning right onto the Great Western Highway at 24 month intervals from 2022 onwards.	8.3

3. OBJECTIVES AND OUTCOMES

The primary objective of this transport management plan is to ensure that transport operations at the Quarry are undertaken in a manner that minimises impacts to other road users and residents.

Table 3 details the objectives and outcomes with respect to transport management of the Quarry Site.

Table 3
Objectives and Outcomes

Objectives	Outcomes
a) To ensure compliance with the criteria of SSD-6084, EPL 12323 and reasonable community expectations.	i) Compliance with all relevant criteria as nominated in SSD-6084 and EPL 12323 and reasonable community expectations.
b) To implement transport management measures during all stages of Quarry operation.	ii) All identified transport management measures implemented.
c) To implement a monitoring program to establish compliance or otherwise with relevant criteria during all stages of Quarry operation.	iii) All identified monitoring undertaken in accordance with the Plan.
d) To implement a complaints handling and response protocol.	iv) Complaints (if any) handled and responded to in an appropriate manner. v) All complaints recorded and reported in accordance with annual reporting requirements.
e) To implement corrective and preventative actions, if required.	vi) Corrective and preventative actions implemented, if required.
f) To implement an incident reporting program, if required.	vii) Incidents (if any) reported in an appropriate manner.
g) To implement a program for continual improvement of strategies.	viii) Periodic review of the Plan to ensure the outcomes of the Plan are achieved.

4. LOCAL SETTING

4.1 SITE LOCATION

The Quarry is accessed via a private, sealed road (Quarry Access Road) which intersects Jenolan Caves Road approximately 4.2 kilometres (km) south of the intersection of Jenolan Caves Road and the Great Western Highway (see **Figure 2**). All products despatched from the Quarry do so via Jenolan Caves Road with the majority of vehicles turning onto the Great Western Highway towards either Sydney (eastbound) or Bathurst/Lithgow (westbound). Occasionally a vehicle will be required to turn left at the intersection of Jenolan Caves Road and the Quarry Access Road to access local areas.

4.2 QUARRY OPERATIONS

The Quarry is permitted to despatch product between the hours of 4:00am and 10:00pm Monday to Friday, between 5:00am to 3:00pm on Saturday (see Section 7.1.1). Product transportation is influenced by customer requirements, which subsequently influences the number and type of trucks despatched. Generally, product despatched to the Sydney metropolitan area utilise truck and trailer or 19 metre B-Double configurations whilst local deliveries generally utilise rigid vehicles of smaller volume. The size of truck and configuration are dependent on delivery requirements.

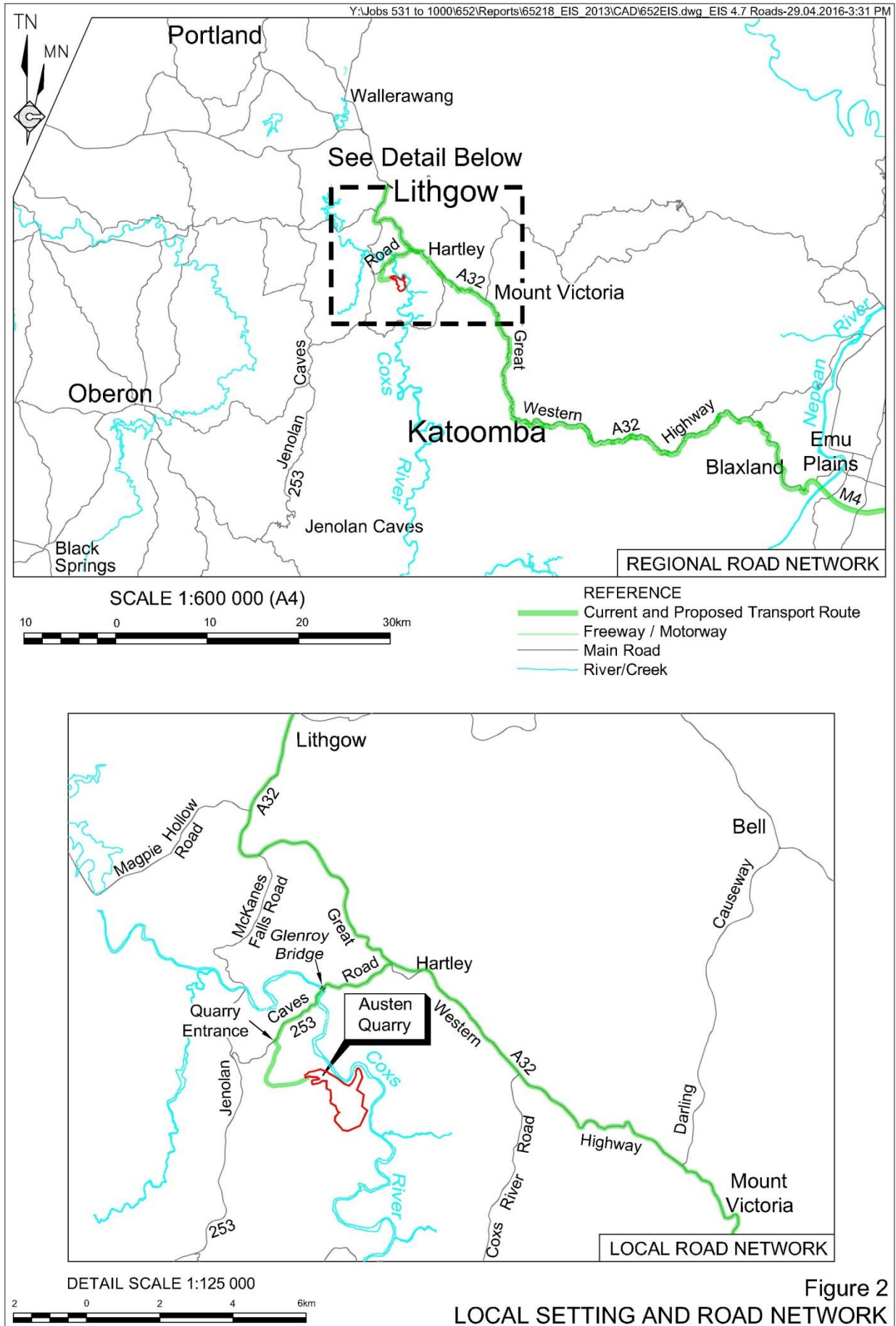
4.3 ROAD NETWORK

4.3.1 Quarry Access Road

This private access road is approximately 3.1km long and connects the Quarry to Jenolan Caves Road. It has a single travel lane in each direction and a sealed width of approximately 10 metres. It is the only access road for personnel and product transportation to and from the Quarry. The road is also utilised by a workforce on land adjacent to the Quarry. The posted speed limit along this road is 80 kilometres per hour (km/h)

4.3.2 Jenolan Caves Road

Jenolan Caves Road is State controlled between the Quarry Access Road and the Great Western Highway and links Hartley to Jenolan Caves and Oberon (via Duckmaloi Road). This road is sealed with a typical width of 6.5 metres and a single travel lane in each direction. It is approved for use by heavy vehicles up to 19 metres long, 24 hours a day with a posted speed limit of 80km/h. The intersection between the Quarry Access Road and Jenolan Caves Road is priority controlled with auxiliary treatments allowing Jenolan Caves Road through traffic to safely pass traffic turning into the Quarry Access Road.



All product transport contractors are requested to slow to 40km/hr on the approach to and when crossing the Glenroy Bridge where it is deemed by the driver to be safe and reasonable to do so. Hy-Tec acknowledges that noise generated by trucks crossing the Glenroy Bridge has impacted the nearby residents in the past and this voluntary commitment is intended to reduce potential noise generation at this location. Hy-Tec cannot formally set speed limits on public roads and it is not feasible to monitor truck speed for all operations. However, Hy-Tec will monitor the commitment through ongoing consultation with local residents. This is considered an acceptable approach that has already resulted in positive feedback from the community.

4.3.3 Great Western Highway

This is the major freight, tourist and commercial road linking the Sydney metropolitan area to regional centres in the Blue Mountains and central west of NSW. As such it conveys local, regional and state traffic. The section of the Great Western Highway used by vehicles travelling between the Quarry and the Sydney metropolitan area has undergone a staged upgrade program to improve the safety and level of service of this road. The intersection of Jenolan Caves Road and the Great Western Highway is four way with auxiliary treatments allowing Great Western Highway through traffic to safely pass traffic turning into Jenolan Caves Road.

5. POTENTIAL TRAFFIC IMPACTS

The following potential impacts on traffic and transport have been identified for transport operations at the Quarry.

- Ongoing truck traffic and possible congestion noticed by other motorists.
- Ongoing truck traffic (noise and vehicle emissions) noticed by residents adjacent to or near the Great Western Highway.
- Periodic death or injury to native animals crossing the transport route.
- Deterioration of the road surface.
- Ongoing truck traffic influencing business owners and tourist facility operators throughout the Blue Mountains.

6. TRANSPORT AND TRAFFIC LIMITS AND REQUIREMENTS

6.1 TRANSPORT LIMITS

Condition 8 of Schedule 2 of SSD-6084 provides limits for transport movements undertaken as part of Quarry operations. This condition limits:

- transport of quarry products to 1.6 million tonnes in any financial year;
- despatch of laden trucks from site to 300 on weekdays and 167 on Saturdays; and
- despatch of laden trucks from site to 200 per weekday, averaged over total number of despatch weekdays in any calendar month.

Compliance with these limits will be monitored and confirmed through the use of CAS weighbridge software system for drivers (refer to Section 7.1.2).

Condition 22 of Schedule 3 of SSD-6084 requires the following operating conditions for vehicles transporting Quarry product.

- i) All reasonable measures are taken such that laden trucks have appropriate signage, including a contact phone number, so they can easily be identified by road users.
- ii) All laden trucks entering or exiting the site have their loads covered.
- iii) All laden trucks exiting the site are cleaned of material that may fall on the road, before leaving the site.

The Hy-Tec Driver's Code of Conduct requires adherence to i), ii) and iii) (refer to Section 7.1.3 and **Appendix 1**).

- iv) No trucks queue at the entrance to the quarry access road (refer to Section 7.1.1).

Condition 23 (b, c and d) of Schedule 3 of SSD 6084 requires the following conditions be addressed under the Plan.

- Measures that would be undertaken to monitor the intersection performance at the Jenolan Caves Road and Great Western Highway intersection and maintain an acceptable level of service at this intersection (refer to Section 8.3).
- Driver's Code of Conduct to minimise the impact of development-related trucks on local residences and road users including measures to minimise use of local roads (refer to Section 7.1.3).
- Measures to be put in place to ensure compliance with the Driver's Code of Conduct (refer to Sections 7.1.3 and 8.2).

6.2 PERFORMANCE INDICATORS

Compliance with conditions set out in SSD-6084 relating to the number of truck movements and volumes transported will indicate whether management systems are performing as intended. In addition, compliance with internal procedures and processes such as the Driver's Code of Conduct and the Driver Vehicle Check as established by internal random checks will also be used to test the effectiveness of management systems.

7. TRANSPORT AND TRAFFIC MANAGEMENT SYSTEM

7.1 PROACTIVE MANAGEMENT MEASURES

7.1.1 Operating Hours

All loading and despatch operations will be undertaken in accordance with the approved hours of operation issued under SSD-6084, EPL 12323 Condition L6.2 and presented in **Table 4**.

**Table 4
Operating Hours**

Activity	Permissible Hours
Loading and Despatch	<ul style="list-style-type: none"> • 4:00am to 10:00pm Monday to Friday; • 5:00am to 3:00pm Saturdays; and • At no time on Sundays or public holidays.
Source: SSD-6084 – Table 1	

The approved hours of operation for transport operations will not apply to the delivery of material outside these hours if that delivery is required by police or other authorities for safety reasons; and/or the operation or personnel or equipment are endangered. In such circumstances, notification must be provided to the EPA and affected residents as soon as possible or within a reasonable period in the case of an emergency.

The staging, queuing or parking of vehicles adjacent to the Quarry Access Road will not be permitted outside of these hours.

7.1.2 Truck Speed at Glenroy Bridge

To address concerns advised by the local residents living near the Glenroy Bridge regarding noise and safety concerns at this location, Hy-Tec has updated driver induction process to instruct all transport contractors that they are to limit the use of compression braking and requested to slow to a speed of 40km/hr on the approach to and when crossing the Glenroy Bridge on Jenolan Caves Road, where it is safe and reasonable to do so.

Hy-Tec cannot formally set speed limits on public roads and it is not feasible to monitor truck speed for all operations. However, Hy-Tec will monitor the commitment through ongoing consultation with local residents.

7.1.3 Laden Truck Movements Monitoring

Laden truck movements are monitored via the use of CAS Weighbridge software that is used to finalise the loading process prior to laden trucks exiting the Quarry.

The CAS Weighbridge software used by Hy-Tec to manage product despatch does not permit drivers to receive a ticket for product loading until the designated time for commencement (4:00am) and will not permit trucks to be ticketed after closing (10:00pm Monday to Friday and 3:00pm Saturday). This system ensures that Hy-Tec maintains its commitments regarding operating and transport hours.

The daily movements of laden trucks despatched and tonnages transported from site will be reviewed by the Quarry Production Manager on a monthly basis to ensure compliance.

A summary of the quantity of quarry products transported from site and the movements of trucks on an hourly, daily, weekly, monthly and annual basis will published on the Hy-Tec website on a bi-annual basis.

7.1.4 Driver's Code of Conduct

This document has been compiled by Hy-Tec to minimise potential impacts to other road users and the environment as a consequence of transport related activities arising from Hy-Tec's operations. Key points of the Driver's Code of Conduct (which is included in full as **Appendix 1**) which specifically addresses the requirement of Condition 23c (see Section 6), are as follows.

- All transport operators are inducted and familiar with Hy-Tec policies and procedures.
- All road regulations relating to transport operations and the approved operating hours are observed.
- The principal transport route is clearly identified.
- Safety initiatives are identified with reference to peak periods and school bus routes.
- All loads are securely covered.
- All drivers are required to avoid using local roads unless it is impractical or unsafe to do so and as a preference to use State and regional roads for the selection of a transportation route once they have exited the Quarry.
- All vehicles carry the appropriate signage and contact details.
- All drivers are instructed on safe and quiet driving practices, with a particular focus on the morning shoulder period.

As a condition of entry and loading of quarry products for delivery, each driver must read, understand and sign a code of conduct. As identified in the Driver's Code of Conduct, disciplinary action will be taken should a driver fail to meet the requirements (refer to **Appendix 1**).

Hy-Tec will undertake random vehicle and driver checks each month to ensure the requirements of the Code of Conduct are being adhered to (refer to Section 8.2).

The Drivers Code of Conduct may be updated from time to time to reflect operations at the Quarry and any changes in regulations for transport operations in NSW.

7.1.5 Driver Vehicle Check

This document is a daily checklist used by Quarry personnel to ensure that vehicles used to transport Quarry products are serviceable and fit for purpose. The document also contains checklists to ensure that the vehicle is operated by individuals who possess all appropriate qualifications and licenses to operate the vehicle and are aware of fatigue management procedures. A copy of this document is included in **Appendix 2**.

7.1.6 Unintentional Tracking of Accumulated Material Off-Site

The Quarry Access Road is a 3.1km private road for use by authorised vehicles only. It is considered likely that any material (mud or similar) that may have accumulated on Quarry vehicles will be deposited on the Quarry Access Road prior to that vehicle entering onto a public road. The operators of the transport vehicles will ensure all laden vehicles have been cleaned of any quarry material or other materials that may fall on the road before leaving the site.

7.2 REACTIVE MANAGEMENT MEASURES

7.2.1 Triggers

Three triggers for reactive management will be applied.

- a) Traffic Complaint. Any complaint received, either directly or via a third party, e.g. Council, will trigger the implementation of the response and corrective action measures described in Section 7.2.2.1.
- b) Exceedance of transport movement criteria established through vehicle movements monitoring. Any record of the number of laden vehicles exiting the Quarry exceeding the criteria nominated in Section 6 will trigger the response and corrective action measures described in Section 7.2.2.2.
- c) Failure to meet the requirements detailed in the Driver's Code of Conduct (refer to Section 7.2.2.3).

7.2.2 Response and Corrective Actions

7.2.2.1 Traffic Complaint

A Complaints and Incidents Procedure for the Austen Quarry is provided in the Environmental Management Strategy. In summary, following receipt of a complaint action will be taken within two working days to determine the cause of the complaint and identify actions to remediate the complaint source. The following details will be recorded following receipt of any transport-related complaint.

- a) The date and time of the complaint.
- b) The method by which the complaint was made.
- c) Any personal details of the complainant which were provided by the complainant or, if no such details were provided, a note to that effect.
- d) The nature of the complaint.
- e) The action taken in relation to the complaint, including any follow-up contact with the complainant.
- f) If no action was taken, the reasons why no action was taken.

All complaints will be investigated and a response provided to the complainant. The investigation will consider the following.

- What activities (and / or equipment) were being carried out or operated at the time of the complaint.
- Whether at the time of the complaint, normal day-to-day activities were being conducted.
- Whether equipment or activities on-site were the potential source of complaint (or whether other activities in the locality may have contributed to the complaint).
- What actions may be carried out to resolve the complaint and / or minimise the likelihood of further complaints.

If monitoring is undertaken to investigate a complaint, the Quarry Production Manager will make the results of the monitoring available for viewing by the complainant, on request.

7.2.2.2 Transport Movements Criteria Exceedance

If the monthly review of laden truck movement monitoring indicates that the number of truck movements exceeds the approved criteria, the following response and action plan will be implemented.

1. After obtaining exceedance information, the Quarry Production Manager (or delegated representative) will review information relating to product despatch and transport activities on the day of the exceedance.
2. The Quarry Production Manager will immediately investigate the cause of the exceedance and review the performance of procedures designed to manage the cause, i.e. orders and despatch system, transport worker management procedures and, if necessary make arrangements to address any shortcomings.
3. In accordance with Condition 6 of Schedule 5 of SSD-6084, the Quarry Production Manager will immediately notify DPIE and any other relevant agencies of any incident. A report on the incident will be provided to DPIE and any other relevant agencies within 7 days of the incident. Ongoing review of truck movement monitoring information will occur to confirm compliance with the approved criteria.
4. The Quarry Manager will investigate the feasibility of modifying SSD-6084 to permit increased truck movements, if there is likely to be a possible exceedance. Any modification to SSD-6084 would require a formal modification application and assessment in accordance with Section 4.55 of the *Environmental Planning and Assessment Act 1993* and in consultation with the DPIE.

7.2.2.3 Driver's Code of Conduct

Failure to meet the requirements of the Driver's Code of Conduct will trigger disciplinary action by Hy-Tec.

8. TRANSPORT AND TRAFFIC MONITORING

8.1 VEHICLE PASS CARDS

All vehicles used for the transport of Quarry product are issued with a swipe card (Vehicle Pass Card). The Vehicle Pass Card is used at the top (entry) and bottom (exit) weighbridges to record vehicle weight (laden and unladen) and track the movement of vehicles exiting the Quarry.

Information collected from the use of these cards assists in the compilation of laden truck movement data and tonnage transported.

8.2 PERIODIC CHECKS

Random inspections will be conducted each month to ensure that the Driver's Code of Conduct and Driver Check system is being adhered to.

The outcomes of the periodic checks are recorded in the Driver Check forms, scanned and stored electronically at the Quarry Site. Electronic records of the outcomes are also recorded in the Hy-Tec Environmental Health and Safety System.

8.3 INTERSECTION PERFORMANCE

In accordance with Condition 22A of Schedule 3 of SSD-6084, an independent assessment of the intersection of the Great Western Highway and Jenolan Caves Road will commence in 2022 and continue at 24 month intervals, to monitor and maintain intersection performance. Should a substantiated complaint or written request from Roads and Maritime Services be received prior to the commencement of monitoring of the intersection of the Great Western Highway and Jenolan Caves Road, an independent assessment of the level of service at this intersection would be commissioned.

This program of monitoring for the intersection of Jenolan Caves Road and the Great Western Highway would inform an adaptive management approach to planning Quarry truck despatch, acknowledging that it would be in the interest of Hy-Tec to maintain efficiency of product despatch operations through managing performance at this intersection.

9. COMPLAINTS HANDLING AND RESPONSE

Hy-Tec has established a complaints management system for the Quarry to ensure that any complaints are recorded, investigated and the feedback provided to the appropriate parties.

Complaints made be made via the following channels.

- Via phone directly to the Quarry on 02 6355 0268.
- Via the online 'Contact Us' portal on the Hy-Tec website (www.hy-tec.com.au/).
- Via a Government agency such as Lithgow City Council or the EPA.

The management of transport-related complaints is incorporated into the Transport Management System for the Quarry. The procedure for recording, investigating and responding to a transport-related complaint is described in Section 7.2.2.

10. INCIDENT MANAGEMENT, NOTIFICATION AND REPORTING

SSD 6084 defines an incident as:

“An occurrence or set of circumstances that causes or threatens to cause material harm and which may or may not be or cause a non-compliance”

Further to this, SSD 6084 defines material harm as follows.

Material harm.....Is harm that:

- *involves actual or potential harm to the health or safety of human beings or to the environment that is not trivial, or*
- *results in actual or potential loss or property damage of an amount, or amounts in aggregate, exceeding \$10,000, (such loss includes the reasonable costs and expenses that would be incurred in taking all reasonable and practicable measures to prevent, mitigate or make good harm to the environment)*

This definition excludes “harm” that is authorised under either this consent or any other statutory approval’

An incident which causes or threatens to cause material harm to the environment (and may or may not result in an exceedance of criteria) is referred to as a **Pollution Incident**.

An incident which is only as a result of an exceedance of criteria, is referred to as a **Non-compliance Incident**.

10.1 INCIDENT MANAGEMENT AND NOTIFICATION

10.1.1 Pollution Incident

It is considered unlikely that a transport-related incident will classify as a Pollution Incident.

10.1.2 Non-Compliance Incident

On identification of a non-compliance against transport limits, which may follow receipt of a complaint, the Quarry Production Manager will be notified and an investigation into the source of the non-compliance or complaint commenced in accordance with the response and corrective actions described in Section 7.2.2.

10.2 INCIDENT REPORTING

Following implementation and review of the corrective measures, a short description of the incident, actions taken and results of the corrective actions will be documented by the Quarry Production Manager.

In accordance with Condition 6 of Schedule 5 of SSD-6084, the Quarry Production Manager will immediately notify DPIE and any other relevant agencies of any incident. A report on the incident will be provided to DPIE and any other relevant agencies within 7 days of the incident.

A summary of all incidents, including dates of occurrence, corrective measures taken and success of these measures will be compiled and reported in the Annual Review to the DPIE and Annual Return to the EPA.

11. DOCUMENTATION, NOTIFICATIONS AND REPORTING

Records of all laden truck movements to and from the site (hourly, daily, weekly, monthly and annually) will be kept and periodically reviewed for adequacy and compliance. A summary of this information will be published on the Hy-Tec website on a bi-annual basis.

12. ROLES AND RESPONSIBILITIES

Table 5 outlines the roles and responsibilities of personnel with reference to management of transport and traffic.

Table 5
Roles and Responsibilities – Transport and Traffic Management

Role	Responsibilities
NSW Quarry Operations Manager	<p>Ensure compliance with the Transport Management Plan.</p> <p>Ensure adequate resources are available to implement the Transport Management Plan.</p> <p>Ensure suitably trained personnel are available to implement the responsibilities of the Quarry Production Manager during any time of the Quarry Production Manager's absence from site.</p> <p>Coordinate the review of the Plan (see Section 14).</p>
Quarry Production Manager, or his/her nominee	<p>Ensure the implementation of the Transport Management Plan.</p> <p>Ensure transport and traffic monitoring results are regularly reviewed/evaluated and entered into the appropriate database.</p> <p>Implementation of the Transport and Traffic Management System (see Section 7).</p> <p>Provide primary contact for complaints and supply follow-up information to any complainant.</p> <p>Initiate investigations of complaints as received from the public or government agency.</p> <p>Inform the NSW Quarry Operations Manager of identified causes of traffic and transport related exceedances of SSD-6084 and any alterations to site operations that may or has influenced the recorded exceedance.</p> <p>Ensure employees are competent through training and awareness programs.</p>
All Truck Drivers	<p>Follow any instructions provided by any on-site personnel.</p> <p>Follow all requirements relating to management of transport and traffic operations within the Driver's Code of Conduct.</p>

13. COMPETENCE TRAINING AND AWARENESS

All personnel and contractors working at the Quarry undergo an induction. This induction includes information on the management of traffic while working on site.

After completing the induction, workers will sign this statement of induction and records of this are kept in the administration office.

Monthly toolbox meetings are held to discuss whole-of-site production, management, safety and environmental issues. Any matters relating to traffic management are raised during these meetings, when necessary.

14. PLAN REVIEW AND CONTINUOUS IMPROVEMENT PROTOCOL

14.1 PLAN REVIEW

In accordance with Condition 5 of Schedule 5 of SSD-6084, the Plan will be internally reviewed within 3 months of submission of an Annual Review, each independent environmental audit and any modification to SSD-6084 to address feedback from these processes. Should changes to the Plan be required, approval for the modified plan will be sought from DPIE.

14.2 ADAPTIVE MANAGEMENT AND CONTINUOUS IMPROVEMENT

A comprehensive review of all management plans will take place every three years and include review of all management measures to ensure these remain within best practice management. This will ensure the adequacy and currency of the Plan and allow for adaptive management and continual improvement. This will include a review of monitored transport and traffic data. Each review will also evaluate the effectiveness of the overall transport and traffic monitoring program and whether it should be modified or scaled back.

15. REFERENCES

GTA Consultants (2014). *Road Transport Assessment for the Austen Quarry Stage 2 Extension Project.* Prepared on behalf of Hy-Tec Industries Pty Limited.

R.W. Corkery & Co. Pty Limited (RWC) (2014). *Environmental Impact Statement for the Austen Quarry Stage 2 Extension Project.* Prepared on behalf of Hy-Tec Industries Pty Limited.

R.W. Corkery & Co. Pty Limited (RWC) (2018). *Statement of Environmental Effects for the Austen Quarry Stage 2 Extension Project (MOD 1 – SSD 6084).* Prepared on behalf of Hy-Tec Industries Pty Limited.

The Transport Planning Partnership (2018). *Austen Quarry Road Transport Assessment.* Prepared on behalf of Hy-Tec Industries Pty Limited.

This page has intentionally been left blank



Annexure 1

Driver's Code of Conduct

(Total No. of pages including blank pages = 4)

This page has intentionally been left blank



Hy-Tec Industries Pty Ltd
ACN 070 100 702
ABN 90 070 100 702

PROCEDURE: DRIVER'S CODE OF CONDUCT
Be Professional – It's Your Job!

Applicability of Procedure

This procedure applies to all transport related activities conducted by _____ employees or contractors to any of Hy-Tec's Quarries located in Sydney region of NSW.

Objective

This Driver's Code of Conduct has been established to minimise the impact of the Austen Quarry, Hartley, Penrose Quarry, Penrose and Tinda Creek Sand Quarry, Mellong, transport operations on the environment and the members of the public, and to ensure a high quality, reliable and safe service.

Process

THE DRIVER WILL:

- Have completed the Hy-Tec On-Line & Site Specific Induction process;
- Comply with all NSW road rules and regulations including, but not limited to, speed, load limits and driving hours;
- Make themselves familiar with the Personal Protection Equipment requirements for each work site and strictly adhere to them;
- Comply with all Site Specific rules and regulations including, but not limited to speed restrictions when operating on private or company property;
- Attend relevant tool box meetings, as requested;
- Ensure that all loads are correctly secured or covered and sealed before entering a public road;
- Limit the use of the engine brakes and other noisy driving practices in built-up areas especially during the morning shoulder period from 4am to 6am;
- Show courtesy to all customers and to all road users at all times, and
- Ensure that your actions bring credit upon yourself, your Company, Hy-Tec and the transport industry in general;
- Ensure that a site specific induction has been completed at all Hy-Tec sites annually and when requested;
- Comply with the Hy-Tec Driver Vehicle Check Inspection when requested by Hy-Tec personnel;
- Ensure laden trucks have appropriate signage, including a contact phone number, so they can be easily identified by road users;
- Ensure all laden vehicles have been cleaned off of any quarry material or other materials that may fall on the road, before leaving site;
- Ensure no trucks queue at the entrance to the Austen quarry access road (or along Jenolan Caves Road) before 4am on weekdays and 5am on Saturday and 5am at Tinda Creek;
- Slow to a speed of 40km/hr on the approach to, and while crossing the Glenroy Bridge on Jenolan Caves Road where it is safe and reasonable to do so.



HY-TEC Industries PTY. LTD.
ACN 070 100 702

1

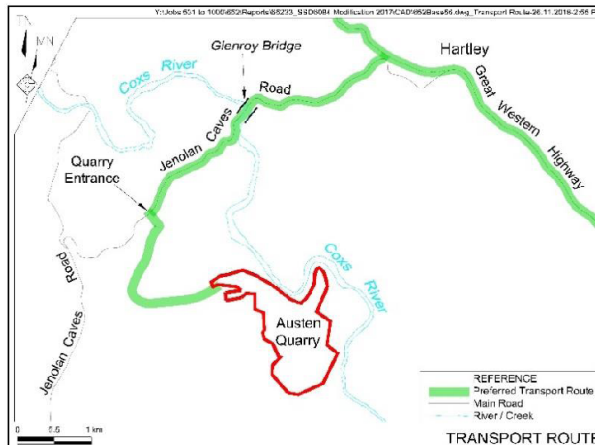
SYDNEY OFFICE

Unit 4 Gateway Business Park 63-79 Parramatta Rd Silverwater NSW 2128 PO BOX 6770 SILVERWATER NSW 1811
PHONE (02) 9647 2866 FAX (02) 9647 2924



Austen Primary Haulage Route

The primary haulage route is displayed below. The route between the Austen Quarry and the Great Western Highway involves two intersections. The first is with Jenolan Caves Road, which is a local road, and the second involves a left or right turn onto the Great Western Highway. It will be the driver's responsibility to ensure they are aware of any changes to the intersections resulting from any future upgrade works.



Safety

It is important that you are aware of your responsibility to consider the safety of all road users. The principal safety concerns for the primary haul route for the Austen Quarry relate to traffic at the intersection of Jenolan Caves Road and the Great Western Highway as there are no schools or significant residential areas located along this primary haul route for the Austen Quarry. However, if trucks need to pass through these areas for product delivery, then particular care will be required to ensure you are aware of the potential for an incident involving pedestrians in these areas. All transport contractors and drivers are to be aware of and comply with their responsibilities under Chain of Responsibility legislation.

Community Consultation

For the 3 quarries, community consultation during times of high market demand will be the responsibility of the Quarry Production Manager. Any interactions with the community, including complaints that may be received, should be reported to the Quarry Production Manager as soon as possible.

Disciplinary Action

You will face disciplinary action if you fail to meet the requirements in this Code of Conduct or Hy-Tec receives a community complaint regarding your driving or vehicle. Disciplinary action can include a verbal warning, a written warning, temporary or permanent dismissal from the site and/or termination of any contract/agreement with Hy-Tec.

Transport Company	
Driver's Name (please print)	
Driver's Signature	
Date	



HY-TEC Industries PTY. LTD.
ACN 070 100 702

SYDNEY OFFICE
Unit 4 Gateway Business Park 63-79 Parramatta Rd Silverwater NSW 2128 PO BOX 6770 SILVERWATER NSW 1811
PHONE (02) 9647 2866 FAX (02) 9647 2924

Annexure 2

Driver-Vehicle Check Inspection Sheet

(Total No. of pages including blank pages = 4)

This page has intentionally been left blank

CONCRETE & AGGREGATES	Adelaide Brighton Ltd
HTA-S-SFT-053	Driver-Vehicle Check Inspection sheet -Tipper Rev:4.2

"Uncontrolled Copy When Printed"

ABL Site _____ Date Approved: 14/11/2018 Review Date: 14/11/2021.

Date:	Time:	Transport Company name:	
Person conducting check:	Signature:		

Drivers Details

Name:	Driver Licence Sighted:	Yes	No
Licence Exp:	SitePass Inducted:	Yes	No
Licence Class:	Site Specific Inducted:	Yes	No

Driver Safety Check (circle if available)

Long Hi-Vis clothing	Yes	No	Safety boots	Yes	No	Hard Hat	Yes	No	Safety Glasses	Yes	No
Hearing Protection	Yes	No	Hand protection	Yes	No	First Aid Kit	Yes	No	Fire Extinguisher	Yes	No

Vehicle Check

Truck make:	Type/configuration:	GVM:	
Rego No. Truck	Rego Expiry Date	Fleet Number:	
Rego No. Trailer 1	Rego Expiry Date	Fleet Number:	
Rego No. Trailer 2	Rego Expiry Date	Fleet Number:	
Mass Management:	Yes No	Maintenance:	Yes No NHVS Accreditation Label:
Vehicle Condition: Does the truck appear to be in good condition? (Limited to visual only).			Yes No
Are all tarps in good condition, good working order and the load is covered before exiting the quarry?			Yes No
Is the truck free of loose material and debris, including on top of tarps?			Yes No

Maintenance (check pre start book for recorded faults)

Pre start check completed today?	Yes No	Record of previous pre start checks?	Yes No
Last fault raised in pre start check:	Dated:		
Can the driver provide evidence that the fault reported was closed out?			Yes No
Select one pre start item for verification:		Is the pre-start accurate?	Yes No
Comments:			

Mass

Docket No.	Gross:	Tare:	Net:	
Is the truck within the legal allowable mass limit including all concessions?				Yes No
Verify the truck has been set up in CAS to the correct mass limits?				
If working higher than general mass limits, does the driver have documentation to verify the allowance?				Yes No

Fatigue

What Fatigue Management system is used? (Tick)	Standard Hours	Basic fatigue	
Shift start:	Recorded break time:	Has the driver had sufficient breaks to comply with stated fatigue management system?	Yes No
If No, what actions were taken?			
Does the driver have records of previous work times including breaks?			Yes No
Do laden trucks have appropriate signage, Incl: contact phone number to enable Identification (NSW Only)			Yes No
Driver's Signature:		Date:	

Record Keeping (All inspections should be placed into Cintellate with supporting documents)

If inspection is acceptable, a Positive Hazard is to be raised.	Cintellate No.	
If inspection is inadequate, a Safety Incident Near Miss is to be raised.		

Adelaide Brighton Ltd is committed to ensuring the safety and health of all individuals associated with its operations. To help achieve this goal, all sites will complete their allocated number of random inspections per month, as per the Driver/Vehicle truck check site register.



Safety Leaders Everyone, Everyday

This page has intentionally been left blank