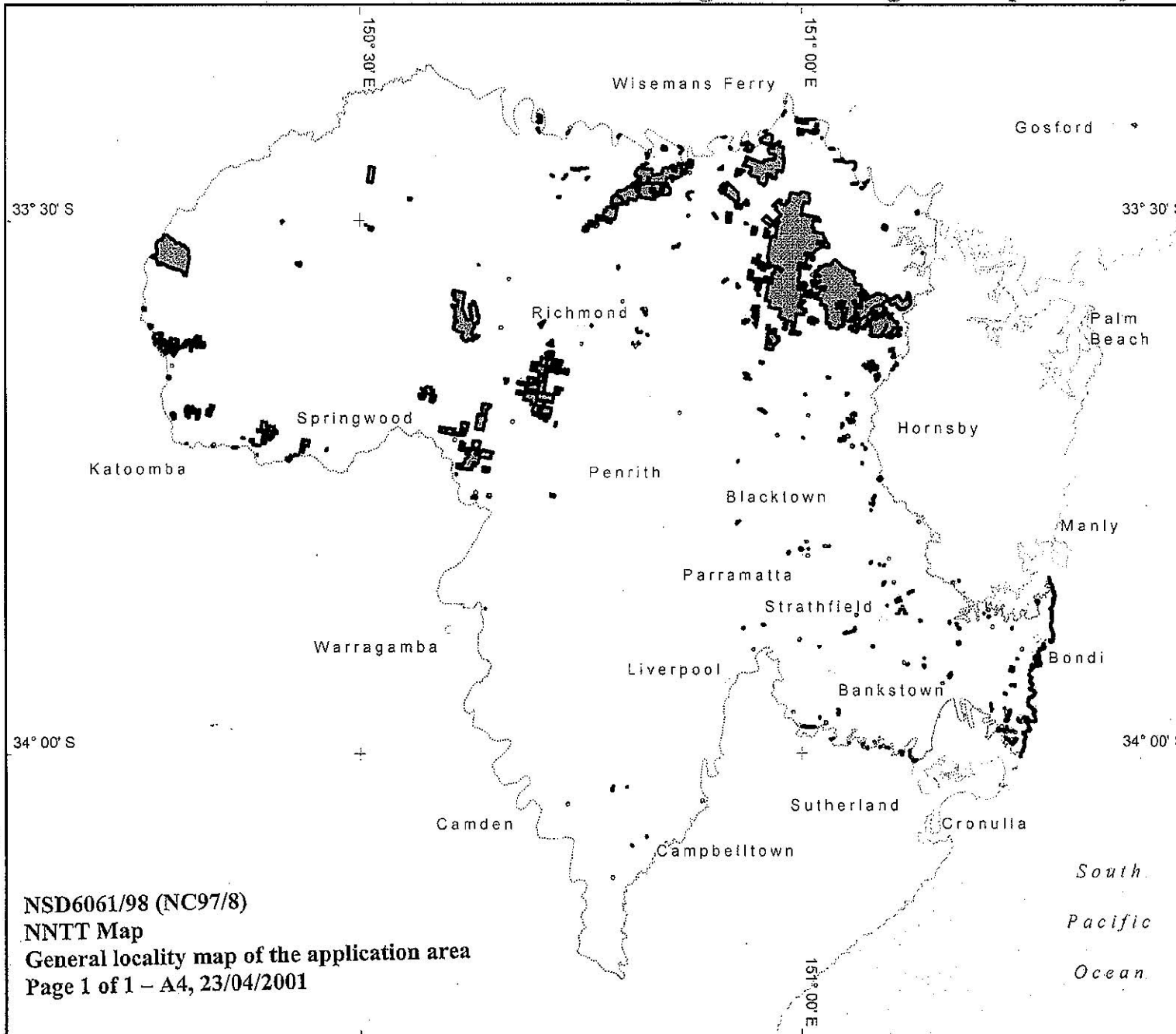




APPENDIX A

Authority Correspondence

NATIVE TITLE APPLICATION: NG6061/98 (Darug Tribal Aboriginal Corporation) NC97/008



NOTE: To determine areas subject to claim within the external boundary, reference to the application description is necessary.

 Map created by: Geospatial Analysis & Mapping Branch, National Native Title Tribunal (23/04/2001)

 Application boundary data sourced from Land and Property Information, Department of Information, Technology & Management (NSW).

 Location and coastline data sourced from AUSLIG.

P:\GEOGRAPHY\Projects\Assistance to Federal Court\NSW\Notifications\1001120110330\NG6061_98\NG6061_98_A4.WOR

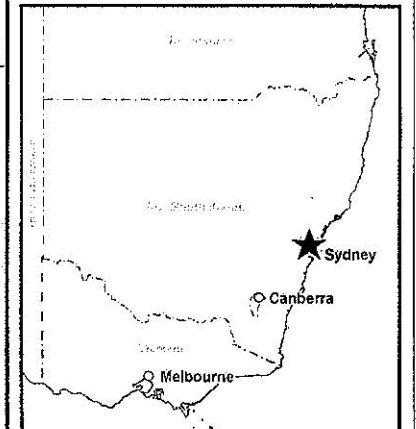
NOTE: This map does not form part of the Register of Native Title Claims. It is provided as general information only and to assist in locating the area involved.

The Registrar, the National Native Title Tribunal and its staff and officers and the Commonwealth, accept no liability and/or give no undertakings, guarantees or warranties concerning the accuracy, completeness or fitness for purpose of the map.



Latitude and Longitude based on Australian Geodetic Datum 1984
 Non Projection

Location of NG6061/98 within New South Wales



NSD6061/98 (NC97/8)
 NNTT Map
 General locality map of the application area
 Page 1 of 1 – A4, 23/04/2001

South
 Pacific
 Ocean

NC97/8 ; Darug #3

DESCRIPTION						HOLDER/VESTEE/LESSEE/TRUSTEE			CONTACT ADDRESS DETAILS			
REF	PARCEL IDENTIFIER	PARISH	LALC	LGA	TYPE	ORG/SURNAME	GIVEN NAME	TITLE	ADDRESS1	TOWN	STATE	PC
1	120/10/751628/III	BOWEN	DEERUBBIN	HAWKESBURY	OTHER CROWN LAND	STATE LANDS SERVICES			PO BOX 878	BLACKTOWN	NSW	2148
2	120/48/751664/III	WHEENY	DEERUBBIN	HAWKESBURY	OTHER CROWN LAND	STATE LANDS SERVICES			PO BOX 878	BLACKTOWN	NSW	2148
4	120/IIIIII	ALEXANDRIA	LA PEROUSE	RANDWICK	OTHER CROWN LAND	STATE LANDS SERVICES			PO BOX 878	BLACKTOWN	NSW	2148
4	120/IIIIII	ALEXANDRIA	LA PEROUSE	WAVERLEY	OTHER CROWN LAND	STATE LANDS SERVICES			PO BOX 878	BLACKTOWN	NSW	2148
4	120/IIIIII	ALEXANDRIA	LA PEROUSE	WOOLLAHRA	OTHER CROWN LAND	STATE LANDS SERVICES			PO BOX 878	BLACKTOWN	NSW	2148
4	120/IIIIII	ALEXANDRIA	METROPOLITAN	SOUTH SYDNEY	OTHER CROWN LAND	STATE LANDS SERVICES			PO BOX 878	BLACKTOWN	NSW	2148
4	120/IIIIII	BANKSTOWN	METROPOLITAN	STRATHFIELD	OTHER CROWN LAND	STATE LANDS SERVICES			PO BOX 878	BLACKTOWN	NSW	2148
4	120/IIIIII	BEROWRA	METROPOLITAN	HORNSBY	OTHER CROWN LAND	STATE LANDS SERVICES			PO BOX 878	BLACKTOWN	NSW	2148
4	120/IIIIII	BILPIN	DEERUBBIN	HAWKESBURY	OTHER CROWN LAND	STATE LANDS SERVICES			PO BOX 878	BLACKTOWN	NSW	2148
4	120/IIIIII	BLACKHEATH	DEERUBBIN	BLUE MOUNTAINS	OTHER CROWN LAND	STATE LANDS SERVICES			PO BOX 878	BLACKTOWN	NSW	2148
4	120/IIIIII	BOTANY	LA PEROUSE	RANDWICK	OTHER CROWN LAND	STATE LANDS SERVICES			PO BOX 878	BLACKTOWN	NSW	2148
4	120/IIIIII	CASTLE HILL	DEERUBBIN	BAULKHAM HILLS	OTHER CROWN LAND	STATE LANDS SERVICES			PO BOX 878	BLACKTOWN	NSW	2148
4	120/IIIIII	CASTLEREAGH	DEERUBBIN	PENRITH	OTHER CROWN LAND	STATE LANDS SERVICES			PO BOX 878	BLACKTOWN	NSW	2148
4	120/IIIIII	COLO	DEERUBBIN	HAWKESBURY	OTHER CROWN LAND	STATE LANDS SERVICES			PO BOX 878	BLACKTOWN	NSW	2148
4	120/IIIIII	CONCORD	METROPOLITAN	ASHFIELD	OTHER CROWN LAND	STATE LANDS SERVICES			PO BOX 878	BLACKTOWN	NSW	2148
4	120/IIIIII	CONCORD	METROPOLITAN	CONCORD	OTHER CROWN LAND	STATE LANDS SERVICES			PO BOX 878	BLACKTOWN	NSW	2148
4	120/IIIIII	COOMASSIE	DEERUBBIN	BLUE MOUNTAINS	OTHER CROWN LAND	STATE LANDS SERVICES			PO BOX 878	BLACKTOWN	NSW	2148
4	120/IIIIII	CORNELIA	DEERUBBIN	BAULKHAM HILLS	OTHER CROWN LAND	STATE LANDS SERVICES			PO BOX 878	BLACKTOWN	NSW	2148
4	120/IIIIII	FIELD OF MARS	DEERUBBIN	PARRAMATTA	OTHER CROWN LAND	STATE LANDS SERVICES			PO BOX 878	BLACKTOWN	NSW	2148
4	120/IIIIII	FIELD OF MARS	METROPOLITAN	HORNSBY	OTHER CROWN LAND	STATE LANDS SERVICES			PO BOX 878	BLACKTOWN	NSW	2148
4	120/IIIIII	FREDERICK	METROPOLITAN	HORNSBY	OTHER CROWN LAND	STATE LANDS SERVICES			PO BOX 878	BLACKTOWN	NSW	2148
4	120/IIIIII	GIDLEY	DEERUBBIN	BLACKTOWN	OTHER CROWN LAND	STATE LANDS SERVICES			PO BOX 878	BLACKTOWN	NSW	2148
4	120/IIIIII	HAM COMMON	DEERUBBIN	HAWKESBURY	OTHER CROWN LAND	STATE LANDS SERVICES			PO BOX 878	BLACKTOWN	NSW	2148
4	120/IIIIII	HUNTERS HILL	METROPOLITAN	HUNTERS HILL	OTHER CROWN LAND	STATE LANDS SERVICES			PO BOX 878	BLACKTOWN	NSW	2148
4	120/IIIIII	HUNTERS HILL	METROPOLITAN	RYDE	OTHER CROWN LAND	STATE LANDS SERVICES			PO BOX 878	BLACKTOWN	NSW	2148
4	120/IIIIII	IRVINE	DEERUBBIN	BLUE MOUNTAINS	OTHER CROWN LAND	STATE LANDS SERVICES			PO BOX 878	BLACKTOWN	NSW	2148
4	120/IIIIII	IRVINE	DEERUBBIN	HAWKESBURY	OTHER CROWN LAND	STATE LANDS SERVICES			PO BOX 878	BLACKTOWN	NSW	2148

ATTACHMENT C

DESCRIPTION						HOLDER/VESTEE/LESSEE/TRUSTEE			CONTACT ADDRESS DETAILS			
REF	PARCEL IDENTIFIER	PARISH	LALC	LGA	TYPE	ORG/SURNAME	GIVEN NAME	TITLE	ADDRESS1	TOWN	STATE	PC
4	120/11111	JAMISON	DEERUBBIN	BLUE MOUNTAINS	OTHER CROWN LAND	STATE LANDS SERVICES			PO BOX 878	BLACKTOWN	NSW	2148
4	120/11111	KURRAJONG	DEERUBBIN	HAWKESBURY	OTHER CROWN LAND	STATE LANDS SERVICES			PO BOX 878	BLACKTOWN	NSW	2148
4	120/11111	LINDEN	DEERUBBIN	BLUE MOUNTAINS	OTHER CROWN LAND	STATE LANDS SERVICES			PO BOX 878	BLACKTOWN	NSW	2148
4	120/11111	MAROTA	DEERUBBIN	BAULKHAM HILLS	OTHER CROWN LAND	STATE LANDS SERVICES			PO BOX 878	BLACKTOWN	NSW	2148
4	120/11111	MARRAMARRA	METROPOLITAN	HORNSBY	OTHER CROWN LAND	STATE LANDS SERVICES			PO BOX 878	BLACKTOWN	NSW	2148
4	120/11111	MEEHAN	DEERUBBIN	HAWKESBURY	OTHER CROWN LAND	STATE LANDS SERVICES			PO BOX 878	BLACKTOWN	NSW	2148
4	120/11111	MERROO	DEERUBBIN	HAWKESBURY	OTHER CROWN LAND	STATE LANDS SERVICES			PO BOX 878	BLACKTOWN	NSW	2148
4	120/11111	MINTO	THARAWAL	CAMPBELLTOWN	OTHER CROWN LAND	STATE LANDS SERVICES			PO BOX 878	BLACKTOWN	NSW	2148
4	120/11111	NARELLAN	THARAWAL	CAMDEN	OTHER CROWN LAND	STATE LANDS SERVICES			PO BOX 878	BLACKTOWN	NSW	2148
4	120/11111	NELSON	DEERUBBIN	BAULKHAM HILLS	OTHER CROWN LAND	STATE LANDS SERVICES			PO BOX 878	BLACKTOWN	NSW	2148
4	120/11111	NEPEAN	DEERUBBIN	BLUE MOUNTAINS	OTHER CROWN LAND	STATE LANDS SERVICES			PO BOX 878	BLACKTOWN	NSW	2148
4	120/11111	NORTH COLAH	METROPOLITAN	HORNSBY	OTHER CROWN LAND	STATE LANDS SERVICES			PO BOX 878	BLACKTOWN	NSW	2148
4	120/11111	PETERSHAM	METROPOLITAN	LEICHHARDT	OTHER CROWN LAND	STATE LANDS SERVICES			PO BOX 878	BLACKTOWN	NSW	2148
4	120/11111	PETERSHAM	METROPOLITAN	MARRICKVILLE	OTHER CROWN LAND	STATE LANDS SERVICES			PO BOX 878	BLACKTOWN	NSW	2148
4	120/11111	SOUTH COLAH	METROPOLITAN	HORNSBY	OTHER CROWN LAND	STATE LANDS SERVICES			PO BOX 878	BLACKTOWN	NSW	2148
4	120/11111	ST GEORGE	METROPOLITAN	CANTERBURY	OTHER CROWN LAND	STATE LANDS SERVICES			PO BOX 878	BLACKTOWN	NSW	2148
4	120/11111	ST GEORGE	METROPOLITAN	KOGARAH	OTHER CROWN LAND	STATE LANDS SERVICES			PO BOX 878	BLACKTOWN	NSW	2148
4	120/11111	ST JAMES	METROPOLITAN	SYDNEY	OTHER CROWN LAND	STATE LANDS SERVICES			PO BOX 878	BLACKTOWN	NSW	2148
4	120/11111	ST LUKE	GANDANGARA	FAIRFIELD	OTHER CROWN LAND	STATE LANDS SERVICES			PO BOX 878	BLACKTOWN	NSW	2148
4	120/11111	ST MATTHEW	DEERUBBIN	HAWKESBURY	OTHER CROWN LAND	STATE LANDS SERVICES			PO BOX 878	BLACKTOWN	NSW	2148
4	120/11111	STRATHDON	DEERUBBIN	BLUE MOUNTAINS	OTHER CROWN LAND	STATE LANDS SERVICES			PO BOX 878	BLACKTOWN	NSW	2148
4	120/11111	WILBERFORCE	DEERUBBIN	HAWKESBURY	OTHER CROWN LAND	STATE LANDS SERVICES			PO BOX 878	BLACKTOWN	NSW	2148
5	120/11111	PETERSHAM	METROPOLITAN	LEICHHARDT	OTHER CROWN LAND	STATE LANDS SERVICES			PO BOX 878	BLACKTOWN	NSW	2148
5	120/11111	WOODFORD	DEERUBBIN	BLUE MOUNTAINS	OTHER CROWN LAND	STATE LANDS SERVICES			PO BOX 878	BLACKTOWN	NSW	2148
6	120/11111	COLO	DEERUBBIN	HAWKESBURY	OTHER CROWN LAND	STATE LANDS SERVICES			PO BOX 878	BLACKTOWN	NSW	2148
6	120/11111	CONCORD	METROPOLITAN	DRUMMOYNE	OTHER CROWN LAND	STATE LANDS SERVICES			PO BOX 878	BLACKTOWN	NSW	2148
6	120/11111	CORNELIA	DEERUBBIN	BAULKHAM HILLS	OTHER CROWN LAND	STATE LANDS SERVICES			PO BOX 878	BLACKTOWN	NSW	2148

DESCRIPTION						HOLDER/VESTEE/LESSEE/TRUSTEE			CONTACT ADDRESS DETAILS			
REF	PARCEL IDENTIFIER	PARISH	LALC	LGA	TYPE	ORG/SURNAME	GIVEN NAME	TITLE	ADDRESS1	TOWN	STATE	PC
6	120////////	FREDERICK	METROPOLITAN	HORNSBY	OTHER CROWN LAND	STATE LANDS SERVICES			PO BOX 878	BLACKTOWN	NSW	2148
6	120////////	MARootA	DEERUBBIN	BAULKHAM HILLS	OTHER CROWN LAND	STATE LANDS SERVICES			PO BOX 878	BLACKTOWN	NSW	2148
6	120////////	MARRAMARRA	METROPOLITAN	HORNSBY	OTHER CROWN LAND	STATE LANDS SERVICES			PO BOX 878	BLACKTOWN	NSW	2148
6	120////////	MEEHAN	DEERUBBIN	HAWKESBURY	OTHER CROWN LAND	STATE LANDS SERVICES			PO BOX 878	BLACKTOWN	NSW	2148
6	120////////	NORTH COLAH	METROPOLITAN	HORNSBY	OTHER CROWN LAND	STATE LANDS SERVICES			PO BOX 878	BLACKTOWN	NSW	2148
6	120////////	ST GEORGE	METROPOLITAN	CANTERBURY	OTHER CROWN LAND	STATE LANDS SERVICES			PO BOX 878	BLACKTOWN	NSW	2148
6	120////////	ST GEORGE	METROPOLITAN	HURSTVILLE	OTHER CROWN LAND	STATE LANDS SERVICES			PO BOX 878	BLACKTOWN	NSW	2148
6	120////////	WILBERFORCE	DEERUBBIN	HAWKESBURY	OTHER CROWN LAND	STATE LANDS SERVICES			PO BOX 878	BLACKTOWN	NSW	2148
7	120////////	BILPIN	DEERUBBIN	HAWKESBURY	OTHER CROWN LAND	STATE LANDS SERVICES			PO BOX 878	BLACKTOWN	NSW	2148
7	120////////	BOTANY	LA PEROUSE	BOTANY BAY	OTHER CROWN LAND	STATE LANDS SERVICES			PO BOX 878	BLACKTOWN	NSW	2148
7	120////////	BOTANY	LA PEROUSE	RANDWICK	OTHER CROWN LAND	STATE LANDS SERVICES			PO BOX 878	BLACKTOWN	NSW	2148
7	120////////	JAMISON	DEERUBBIN	BLUE MOUNTAINS	OTHER CROWN LAND	STATE LANDS SERVICES			PO BOX 878	BLACKTOWN	NSW	2148
7	120////////	PETERSHAM	METROPOLITAN	MARRICKVILLE	OTHER CROWN LAND	STATE LANDS SERVICES			PO BOX 878	BLACKTOWN	NSW	2148
7	120////////	ST MATTHEW	DEERUBBIN	HAWKESBURY	OTHER CROWN LAND	STATE LANDS SERVICES			PO BOX 878	BLACKTOWN	NSW	2148
7	120////////	ST PETER	THARAWAL	CAMPBELLTOWN	OTHER CROWN LAND	STATE LANDS SERVICES			PO BOX 878	BLACKTOWN	NSW	2148
8	120////////	NOT_DEFINED	NOT_DEFINED	RANDWICK	OTHER CROWN LAND	STATE LANDS SERVICES			PO BOX 878	BLACKTOWN	NSW	2148
8	120////////	NOT_DEFINED	NOT_DEFINED	WAVERLEY	OTHER CROWN LAND	STATE LANDS SERVICES			PO BOX 878	BLACKTOWN	NSW	2148
8	120////////	NOT_DEFINED	NOT_DEFINED	WOOLLAHRA	OTHER CROWN LAND	STATE LANDS SERVICES			PO BOX 878	BLACKTOWN	NSW	2148
9	120////////	HUNTERS HILL	METROPOLITAN	RYDE	OTHER CROWN LAND	STATE LANDS SERVICES			PO BOX 878	BLACKTOWN	NSW	2148
10	120////////	FIELD OF MARS	DEERUBBIN	PARRAMATTA	OTHER CROWN LAND	STATE LANDS SERVICES			PO BOX 878	BLACKTOWN	NSW	2148
11	120////////	FIELD OF MARS	METROPOLITAN	HORNSBY	OTHER CROWN LAND	STATE LANDS SERVICES			PO BOX 878	BLACKTOWN	NSW	2148
11	120////////	FREDERICK	METROPOLITAN	HORNSBY	OTHER CROWN LAND	STATE LANDS SERVICES			PO BOX 878	BLACKTOWN	NSW	2148
11	120////////	LIBERTY PLAINS	METROPOLITAN	AUBURN	OTHER CROWN LAND	STATE LANDS SERVICES			PO BOX 878	BLACKTOWN	NSW	2148
12	120////10024/3000//	ST GEORGE	METROPOLITAN	KOGARAH	OTHER CROWN LAND	STATE LANDS SERVICES			PO BOX 878	BLACKTOWN	NSW	2148
13	120////1047/3000//	HUNTERS HILL	METROPOLITAN	HUNTERS HILL	OTHER CROWN LAND	STATE LANDS SERVICES			PO BOX 878	BLACKTOWN	NSW	2148
14	120////10860/3000//	CONCORD	METROPOLITAN	CONCORD	OTHER CROWN LAND	STATE LANDS SERVICES			PO BOX 878	BLACKTOWN	NSW	2148
15	120////1107/2030/R/	FIELD OF MARS	METROPOLITAN	HORNSBY	OTHER CROWN LAND	STATE LANDS SERVICES			PO BOX 878	BLACKTOWN	NSW	2148

DESCRIPTION					HOLDER/VESTEE/LESSEE/TRUSTEE			CONTACT ADDRESS DETAILS				
REF	PARCEL IDENTIFIER	PARISH	LALC	LGA	TYPE	ORG/SURNAME	GIVEN NAME	TITLE	ADDRESS1	TOWN	STATE	PC
16	120////11292/3000//	NEPEAN	DEERUBBIN	HAWKESBURY	OTHER CROWN LAND	STATE LANDS SERVICES			PO BOX 878	BLACKTOWN	NSW	2148
17	120////1159/3000//	NELSON	DEERUBBIN	BAULKHAM HILLS	OTHER CROWN LAND	STATE LANDS SERVICES			PO BOX 878	BLACKTOWN	NSW	2148
18	120////12386/3000//	HUNTERS HILL	METROPOLITAN	RYDE	OTHER CROWN LAND	STATE LANDS SERVICES			PO BOX 878	BLACKTOWN	NSW	2148
19	120////14732/1603//	KURRAJONG	DEERUBBIN	HAWKESBURY	OTHER CROWN LAND	STATE LANDS SERVICES			PO BOX 878	BLACKTOWN	NSW	2148
20	120////15277/3000//	BOTANY	LA PEROUSE	RANDWICK	OTHER CROWN LAND	STATE LANDS SERVICES			PO BOX 878	BLACKTOWN	NSW	2148
21	120////15480/3090//	BLACKHEATH	DEERUBBIN	BLUE MOUNTAINS	OTHER CROWN LAND	STATE LANDS SERVICES			PO BOX 878	BLACKTOWN	NSW	2148
22	120////1616/3000//	ALEXANDRIA	LA PEROUSE	WAVERLEY	OTHER CROWN LAND	STATE LANDS SERVICES			PO BOX 878	BLACKTOWN	NSW	2148
23	120////18846/3000//	PETERSHAM	METROPOLITAN	MARRICKVILLE	OTHER CROWN LAND	STATE LANDS SERVICES			PO BOX 878	BLACKTOWN	NSW	2148
24	120////1915/3000//	ST GEORGE	METROPOLITAN	KOGARAH	OTHER CROWN LAND	STATE LANDS SERVICES			PO BOX 878	BLACKTOWN	NSW	2148
25	120////2248/3000//	MENANGLE	THARAWAL	CAMPBELLTOWN	OTHER CROWN LAND	STATE LANDS SERVICES			PO BOX 878	BLACKTOWN	NSW	2148
26	120////22865/3000//	JAMISON	DEERUBBIN	BLUE MOUNTAINS	OTHER CROWN LAND	STATE LANDS SERVICES			PO BOX 878	BLACKTOWN	NSW	2148
27	120////2508/3000//	ALEXANDRIA	LA PEROUSE	WAVERLEY	OTHER CROWN LAND	STATE LANDS SERVICES			PO BOX 878	BLACKTOWN	NSW	2148
28	120////268/858/RJ	ST JAMES	METROPOLITAN	SYDNEY	OTHER CROWN LAND	STATE LANDS SERVICES			PO BOX 878	BLACKTOWN	NSW	2148
29	120////2958/3000//	CONCORD	METROPOLITAN	ASHFIELD	OTHER CROWN LAND	STATE LANDS SERVICES			PO BOX 878	BLACKTOWN	NSW	2148
30	120////3558/3000//	ST GEORGE	METROPOLITAN	KOGARAH	OTHER CROWN LAND	STATE LANDS SERVICES			PO BOX 878	BLACKTOWN	NSW	2148
31	120////414/3000//	CONCORD	METROPOLITAN	DRUMMOYNE	OTHER CROWN LAND	STATE LANDS SERVICES			PO BOX 878	BLACKTOWN	NSW	2148
32	120////4294/3000//	PETERSHAM	METROPOLITAN	CANTERBURY	OTHER CROWN LAND	STATE LANDS SERVICES			PO BOX 878	BLACKTOWN	NSW	2148
33	120////5165/3000//	PETERSHAM	METROPOLITAN	MARRICKVILLE	OTHER CROWN LAND	STATE LANDS SERVICES			PO BOX 878	BLACKTOWN	NSW	2148
34	120////5223/3000//	ST GEORGE	METROPOLITAN	HURSTVILLE	OTHER CROWN LAND	STATE LANDS SERVICES			PO BOX 878	BLACKTOWN	NSW	2148
35	120////578/3000//	HAM COMMON	DEERUBBIN	HAWKESBURY	OTHER CROWN LAND	STATE LANDS SERVICES			PO BOX 878	BLACKTOWN	NSW	2148
36	120////7506/3000//	ST GEORGE	METROPOLITAN	HURSTVILLE	OTHER CROWN LAND	STATE LANDS SERVICES			PO BOX 878	BLACKTOWN	NSW	2148
37	120////80/3000/RJ	FIELD OF MARS	DEERUBBIN	PARRAMATTA	OTHER CROWN LAND	STATE LANDS SERVICES			PO BOX 878	BLACKTOWN	NSW	2148
39	120/1//182467////	CONCORD	METROPOLITAN	DRUMMOYNE	OTHER CROWN LAND	STATE LANDS SERVICES			PO BOX 878	BLACKTOWN	NSW	2148
40	120/1//192764////	BANKSTOWN	GANDANGARA	BANKSTOWN	OTHER CROWN LAND	STATE LANDS SERVICES			PO BOX 878	BLACKTOWN	NSW	2148
41	120/1//34388////	ALEXANDRIA	LA PEROUSE	WOOLLAHRA	OTHER CROWN LAND	STATE LANDS SERVICES			PO BOX 878	BLACKTOWN	NSW	2148
42	120/1//39760////	BOTANY	LA PEROUSE	RANDWICK	OTHER CROWN LAND	STATE LANDS SERVICES			PO BOX 878	BLACKTOWN	NSW	2148
43	120/1//592412////	JAMISON	DEERUBBIN	BLUE MOUNTAINS	OTHER CROWN LAND	STATE LANDS SERVICES			PO BOX 878	BLACKTOWN	NSW	2148

DESCRIPTION						HOLDER/VESSEE/LESSEE/TRUSTEE			CONTACT ADDRESS DETAILS			
REF	PARCEL IDENTIFIER	PARISH	LALC	LGA	TYPE	ORG/SURNAME	GIVEN NAME	TITLE	ADDRESS1	TOWN	STATE	PC
44	120/1//709431////	FIELD OF MARS	METROPOLITAN	PARRAMATTA	OTHER CROWN LAND	STATE LANDS SERVICES			PO BOX 878	BLACKTOWN	NSW	2148
45	120/1//724350////	CONCORD	METROPOLITAN	DRUMMOYNE	OTHER CROWN LAND	STATE LANDS SERVICES			PO BOX 878	BLACKTOWN	NSW	2148
46	120/1//820326////	BANKSTOWN	GANDANGARA	BANKSTOWN	OTHER CROWN LAND	STATE LANDS SERVICES			PO BOX 878	BLACKTOWN	NSW	2148
47	120/1//822201////	CASTLE HILL	DEERUBBIN	BAULKHAM HILLS	OTHER CROWN LAND	STATE LANDS SERVICES			PO BOX 878	BLACKTOWN	NSW	2148
48	120/1//822268///	LIBERTY PLAINS	GANDANGARA	BANKSTOWN	OTHER CROWN LAND	STATE LANDS SERVICES			PO BOX 878	BLACKTOWN	NSW	2148
49	120/1//824022////	JAMISON	DEERUBBIN	BLUE MOUNTAINS	OTHER CROWN LAND	STATE LANDS SERVICES			PO BOX 878	BLACKTOWN	NSW	2148
50	120/1//848020////	JAMISON	DEERUBBIN	BLUE MOUNTAINS	OTHER CROWN LAND	STATE LANDS SERVICES			PO BOX 878	BLACKTOWN	NSW	2148
51	120/1//848071////	ST MATTHEW	DEERUBBIN	HAWKESBURY	OTHER CROWN LAND	STATE LANDS SERVICES			PO BOX 878	BLACKTOWN	NSW	2148
52	120/1//850403////	ST JOHN	DEERUBBIN	HOLROYD	OTHER CROWN LAND	STATE LANDS SERVICES			PO BOX 878	BLACKTOWN	NSW	2148
53	120/1//867085////	ST GEORGE	METROPOLITAN	ROCKDALE	OTHER CROWN LAND	STATE LANDS SERVICES			PO BOX 878	BLACKTOWN	NSW	2148
54	120/1//965996////	ST LUKE	GANDANGARA	FAIRFIELD	OTHER CROWN LAND	STATE LANDS SERVICES			PO BOX 878	BLACKTOWN	NSW	2148
55	120/1/22/758605////	JAMISON	DEERUBBIN	BLUE MOUNTAINS	OTHER CROWN LAND	STATE LANDS SERVICES			PO BOX 878	BLACKTOWN	NSW	2148
56	120/1/26/758829////	ST JOHN	DEERUBBIN	PARRAMATTA	OTHER CROWN LAND	STATE LANDS SERVICES			PO BOX 878	BLACKTOWN	NSW	2148
57	120/10//751627////	BLACKHEATH	DEERUBBIN	BLUE MOUNTAINS	OTHER CROWN LAND	STATE LANDS SERVICES			PO BOX 878	BLACKTOWN	NSW	2148
58	120/10//829656///	LIBERTY PLAINS	METROPOLITAN	BANKSTOWN	OTHER CROWN LAND	STATE LANDS SERVICES			PO BOX 878	BLACKTOWN	NSW	2148
59	120/10/20/758605////	JAMISON	DEERUBBIN	BLUE MOUNTAINS	OTHER CROWN LAND	STATE LANDS SERVICES			PO BOX 878	BLACKTOWN	NSW	2148
60	120/10/9/758387////	STRATHDON	DEERUBBIN	PENRITH	OTHER CROWN LAND	STATE LANDS SERVICES			PO BOX 878	BLACKTOWN	NSW	2148
61	120/101//786384////	SOUTH COLAH	METROPOLITAN	HORNSBY	OTHER CROWN LAND	STATE LANDS SERVICES			PO BOX 878	BLACKTOWN	NSW	2148
62	120/103//752025////	CORNELIA	DEERUBBIN	BAULKHAM HILLS	OTHER CROWN LAND	STATE LANDS SERVICES			PO BOX 878	BLACKTOWN	NSW	2148
63	120/104//752021////	CASTLEREAGH	DEERUBBIN	PENRITH	OTHER CROWN LAND	STATE LANDS SERVICES			PO BOX 878	BLACKTOWN	NSW	2148
64	120/1051//752053////	SOUTH COLAH	METROPOLITAN	HORNSBY	OTHER CROWN LAND	STATE LANDS SERVICES			PO BOX 878	BLACKTOWN	NSW	2148
65	120/1052//752053////	SOUTH COLAH	METROPOLITAN	HORNSBY	OTHER CROWN LAND	STATE LANDS SERVICES			PO BOX 878	BLACKTOWN	NSW	2148
66	120/106//752029////	FREDERICK	METROPOLITAN	HORNSBY	OTHER CROWN LAND	STATE LANDS SERVICES			PO BOX 878	BLACKTOWN	NSW	2148
67	120/1064//752015////	BOTANY	LA PEROUSE	RANDWICK	OTHER CROWN LAND	STATE LANDS SERVICES			PO BOX 878	BLACKTOWN	NSW	2148
68	120/109//752014////	BEROWRA	METROPOLITAN	HORNSBY	OTHER CROWN LAND	STATE LANDS SERVICES			PO BOX 878	BLACKTOWN	NSW	2148
69	120/11//939734////	CONCORD	METROPOLITAN	DRUMMOYNE	OTHER CROWN LAND	STATE LANDS SERVICES			PO BOX 878	BLACKTOWN	NSW	2148
70	120/1114//48270////	CASTLE HILL	DEERUBBIN	BAULKHAM HILLS	OTHER CROWN LAND	STATE LANDS SERVICES			PO BOX 878	BLACKTOWN	NSW	2148

DESCRIPTION						HOLDER/VESSEE/LESSEE/TRUSTEE			CONTACT ADDRESS DETAILS			
REF	PARCEL IDENTIFIER	PARISH	LALC	LGA	TYPE	ORG/SURNAME	GIVEN NAME	TITLE	ADDRESS1	TOWN	STATE	PC
71	120/113//751627////	BLACKHEATH	DEERUBBIN	BLUE MOUNTAINS	OTHER CROWN LAND	STATE LANDS SERVICES			PO BOX 878	BLACKTOWN	NSW	2148
72	120/113//752039////	MARROTA	DEERUBBIN	BAULKHAM HILLS	OTHER CROWN LAND	STATE LANDS SERVICES			PO BOX 878	BLACKTOWN	NSW	2148
73	120/117//751662////	STRATHDON	DEERUBBIN	BLUE MOUNTAINS	OTHER CROWN LAND	STATE LANDS SERVICES			PO BOX 878	BLACKTOWN	NSW	2148
74	120/118//752039////	MARROTA	DEERUBBIN	BAULKHAM HILLS	OTHER CROWN LAND	STATE LANDS SERVICES			PO BOX 878	BLACKTOWN	NSW	2148
75	120/118//752039/1919/2030//	MARROTA	DEERUBBIN	BAULKHAM HILLS	OTHER CROWN LAND	STATE LANDS SERVICES			PO BOX 878	BLACKTOWN	NSW	2148
76	120/12//774457////	JAMISON	DEERUBBIN	BLUE MOUNTAINS	OTHER CROWN LAND	STATE LANDS SERVICES			PO BOX 878	BLACKTOWN	NSW	2148
77	120/12//939734////	CONCORD	METROPOLITAN	DRUMMOYNE	OTHER CROWN LAND	STATE LANDS SERVICES			PO BOX 878	BLACKTOWN	NSW	2148
78	120/120//752039////	MARROTA	DEERUBBIN	BAULKHAM HILLS	OTHER CROWN LAND	STATE LANDS SERVICES			PO BOX 878	BLACKTOWN	NSW	2148
79	120/121//752039////	MARROTA	DEERUBBIN	BAULKHAM HILLS	OTHER CROWN LAND	STATE LANDS SERVICES			PO BOX 878	BLACKTOWN	NSW	2148
80	120/122//752039////	MARROTA	DEERUBBIN	BAULKHAM HILLS	OTHER CROWN LAND	STATE LANDS SERVICES			PO BOX 878	BLACKTOWN	NSW	2148
81	120/123//751627////	BLACKHEATH	DEERUBBIN	BLUE MOUNTAINS	OTHER CROWN LAND	STATE LANDS SERVICES			PO BOX 878	BLACKTOWN	NSW	2148
82	120/125//752039/4104/2030//	MARROTA	DEERUBBIN	BAULKHAM HILLS	OTHER CROWN LAND	STATE LANDS SERVICES			PO BOX 878	BLACKTOWN	NSW	2148
83	120/126//752039////	MARROTA	DEERUBBIN	BAULKHAM HILLS	OTHER CROWN LAND	STATE LANDS SERVICES			PO BOX 878	BLACKTOWN	NSW	2148
84	120/127//751627////	BLACKHEATH	DEERUBBIN	BLUE MOUNTAINS	OTHER CROWN LAND	STATE LANDS SERVICES			PO BOX 878	BLACKTOWN	NSW	2148
85	120/127//752039////	MARROTA	DEERUBBIN	BAULKHAM HILLS	OTHER CROWN LAND	STATE LANDS SERVICES			PO BOX 878	BLACKTOWN	NSW	2148
86	120/129//752039/1919/2030//	MARROTA	DEERUBBIN	BAULKHAM HILLS	OTHER CROWN LAND	STATE LANDS SERVICES			PO BOX 878	BLACKTOWN	NSW	2148
87	120/13//58560////	CONCORD	METROPOLITAN	DRUMMOYNE	OTHER CROWN LAND	STATE LANDS SERVICES			PO BOX 878	BLACKTOWN	NSW	2148
88	120/13//631041////	ST PETER	THARAWAL	CAMPBELLTOWN	OTHER CROWN LAND	STATE LANDS SERVICES			PO BOX 878	BLACKTOWN	NSW	2148
89	120/13//774457////	JAMISON	DEERUBBIN	BLUE MOUNTAINS	OTHER CROWN LAND	STATE LANDS SERVICES			PO BOX 878	BLACKTOWN	NSW	2148
90	120/131//751635////	COOMASSIE	DEERUBBIN	BLUE MOUNTAINS	OTHER CROWN LAND	STATE LANDS SERVICES			PO BOX 878	BLACKTOWN	NSW	2148
91	120/132//751635////	COOMASSIE	DEERUBBIN	BLUE MOUNTAINS	OTHER CROWN LAND	STATE LANDS SERVICES			PO BOX 878	BLACKTOWN	NSW	2148
92	120/134//751658/2245/1507//	MERROO	DEERUBBIN	HAWKESBURY	OTHER CROWN LAND	STATE LANDS SERVICES			PO BOX 878	BLACKTOWN	NSW	2148
93	120/134//752021////	CASTLEREAGH	DEERUBBIN	PENRITH	OTHER CROWN LAND	STATE LANDS SERVICES			PO BOX 878	BLACKTOWN	NSW	2148
94	120/134//752039/2308/2030//	MARROTA	DEERUBBIN	BAULKHAM HILLS	OTHER CROWN LAND	STATE LANDS SERVICES			PO BOX 878	BLACKTOWN	NSW	2148
95	120/135//751658////	MERROO	DEERUBBIN	HAWKESBURY	OTHER CROWN LAND	STATE LANDS SERVICES			PO BOX 878	BLACKTOWN	NSW	2148
96	120/135//752021////	CASTLEREAGH	DEERUBBIN	PENRITH	OTHER CROWN LAND	STATE LANDS SERVICES			PO BOX 878	BLACKTOWN	NSW	2148
97	120/136//752021////	CASTLEREAGH	DEERUBBIN	PENRITH	OTHER CROWN LAND	STATE LANDS SERVICES			PO BOX 878	BLACKTOWN	NSW	2148

DESCRIPTION						HOLDER/VESSEE/LESSEE/TRUSTEE			CONTACT ADDRESS DETAILS			
REF	PARCEL IDENTIFIER	PARISH	LALC	LGA	TYPE	ORG/SURNAME	GIVEN NAME	TITLE	ADDRESS1	TOWN	STATE	PC
98	120/137//752021////	CASTLEREAGH	DEERUBBIN	PENRITH	OTHER CROWN LAND	STATE LANDS SERVICES			PO BOX 878	BLACKTOWN	NSW	2148
99	120/138//752021////	CASTLEREAGH	DEERUBBIN	PENRITH	OTHER CROWN LAND	STATE LANDS SERVICES			PO BOX 878	BLACKTOWN	NSW	2148
100	120/14//3790////	CONCORD	METROPOLITAN	DRUMMOYNE	OTHER CROWN LAND	STATE LANDS SERVICES			PO BOX 878	BLACKTOWN	NSW	2148
101	120/14//842775////	HUNTERS HILL	METROPOLITAN	RYDE	OTHER CROWN LAND	STATE LANDS SERVICES			PO BOX 878	BLACKTOWN	NSW	2148
102	120/144//751635////	COOMASSIE	DEERUBBIN	BLUE MOUNTAINS	OTHER CROWN LAND	STATE LANDS SERVICES			PO BOX 878	BLACKTOWN	NSW	2148
103	120/144//752014////	BEROWRA	METROPOLITAN	HORNSBY	OTHER CROWN LAND	STATE LANDS SERVICES			PO BOX 878	BLACKTOWN	NSW	2148
104	120/144//752048////	NORTH COLAH	METROPOLITAN	HORNSBY	OTHER CROWN LAND	STATE LANDS SERVICES			PO BOX 878	BLACKTOWN	NSW	2148
105	120/146//752021////	CASTLEREAGH	DEERUBBIN	PENRITH	OTHER CROWN LAND	STATE LANDS SERVICES			PO BOX 878	BLACKTOWN	NSW	2148
106	120/146//752048////	NORTH COLAH	METROPOLITAN	HORNSBY	OTHER CROWN LAND	STATE LANDS SERVICES			PO BOX 878	BLACKTOWN	NSW	2148
107	120/147//752021////	CASTLEREAGH	DEERUBBIN	PENRITH	OTHER CROWN LAND	STATE LANDS SERVICES			PO BOX 878	BLACKTOWN	NSW	2148
108	120/148//47922////	COOMASSIE	DEERUBBIN	BLUE MOUNTAINS	OTHER CROWN LAND	STATE LANDS SERVICES			PO BOX 878	BLACKTOWN	NSW	2148
109	120/1492//752011////	ALEXANDRIA	LA PEROUSE	RANDWICK	OTHER CROWN LAND	STATE LANDS SERVICES			PO BOX 878	BLACKTOWN	NSW	2148
110	120/15//16074////	BEROWRA	METROPOLITAN	HORNSBY	OTHER CROWN LAND	STATE LANDS SERVICES			PO BOX 878	BLACKTOWN	NSW	2148
111	120/15//57112////	CONCORD	METROPOLITAN	DRUMMOYNE	OTHER CROWN LAND	STATE LANDS SERVICES			PO BOX 878	BLACKTOWN	NSW	2148
112	120/150//752021////	CASTLEREAGH	DEERUBBIN	PENRITH	OTHER CROWN LAND	STATE LANDS SERVICES			PO BOX 878	BLACKTOWN	NSW	2148
113	120/150//752025////	CORNELIA	DEERUBBIN	BAULKHAM HILLS	OTHER CROWN LAND	STATE LANDS SERVICES			PO BOX 878	BLACKTOWN	NSW	2148
114	120/151//752021////	CASTLEREAGH	DEERUBBIN	PENRITH	OTHER CROWN LAND	STATE LANDS SERVICES			PO BOX 878	BLACKTOWN	NSW	2148
115	120/152//752021////	CASTLEREAGH	DEERUBBIN	PENRITH	OTHER CROWN LAND	STATE LANDS SERVICES			PO BOX 878	BLACKTOWN	NSW	2148
116	120/155//752048////	NORTH COLAH	METROPOLITAN	HORNSBY	OTHER CROWN LAND	STATE LANDS SERVICES			PO BOX 878	BLACKTOWN	NSW	2148
117	120/156//10177////	BANKSTOWN	GANDANGARA	BANKSTOWN	OTHER CROWN LAND	STATE LANDS SERVICES			PO BOX 878	BLACKTOWN	NSW	2148
118	120/1562//822233////	ALEXANDRIA	LA PEROUSE	WAVERLEY	OTHER CROWN LAND	STATE LANDS SERVICES			PO BOX 878	BLACKTOWN	NSW	2148
119	120/158//752048////	NORTH COLAH	METROPOLITAN	HORNSBY	OTHER CROWN LAND	STATE LANDS SERVICES			PO BOX 878	BLACKTOWN	NSW	2148
120	120/16//3790////	CONCORD	METROPOLITAN	DRUMMOYNE	OTHER CROWN LAND	STATE LANDS SERVICES			PO BOX 878	BLACKTOWN	NSW	2148
121	120/160//752014////	BEROWRA	METROPOLITAN	HORNSBY	OTHER CROWN LAND	STATE LANDS SERVICES			PO BOX 878	BLACKTOWN	NSW	2148
122	120/160//752021////	CASTLEREAGH	DEERUBBIN	PENRITH	OTHER CROWN LAND	STATE LANDS SERVICES			PO BOX 878	BLACKTOWN	NSW	2148
123	120/161//752021////	CASTLEREAGH	DEERUBBIN	PENRITH	OTHER CROWN LAND	STATE LANDS SERVICES			PO BOX 878	BLACKTOWN	NSW	2148
124	120/1611//752011////	ALEXANDRIA	LA PEROUSE	WAVERLEY	OTHER CROWN LAND	STATE LANDS SERVICES			PO BOX 878	BLACKTOWN	NSW	2148

DESCRIPTION					HOLDER/VESTEE/LESSEE/TRUSTEE			CONTACT ADDRESS DETAILS				
REF	PARCEL IDENTIFIER	PARISH	LALC	LGA	TYPE	ORG/SURNAME	GIVEN NAME	TITLE	ADDRESS1	TOWN	STATE	PC
125	120/162//752021////	CASTLEREAGH	DEERUBBIN	PENRITH	OTHER CROWN LAND	STATE LANDS SERVICES			PO BOX 878	BLACKTOWN	NSW	2148
126	120/163//752021////	CASTLEREAGH	DEERUBBIN	PENRITH	OTHER CROWN LAND	STATE LANDS SERVICES			PO BOX 878	BLACKTOWN	NSW	2148
127	120/164//752021////	CASTLEREAGH	DEERUBBIN	PENRITH	OTHER CROWN LAND	STATE LANDS SERVICES			PO BOX 878	BLACKTOWN	NSW	2148
128	120/165//752014////	BEROWRA	METROPOLITAN	HORNSBY	OTHER CROWN LAND	STATE LANDS SERVICES			PO BOX 878	BLACKTOWN	NSW	2148
129	120/165//752021////	CASTLEREAGH	DEERUBBIN	PENRITH	OTHER CROWN LAND	STATE LANDS SERVICES			PO BOX 878	BLACKTOWN	NSW	2148
130	120/166//752021////	CASTLEREAGH	DEERUBBIN	PENRITH	OTHER CROWN LAND	STATE LANDS SERVICES			PO BOX 878	BLACKTOWN	NSW	2148
131	120/187//751627////	BLACKHEATH	DEERUBBIN	BLUE MOUNTAINS	OTHER CROWN LAND	STATE LANDS SERVICES			PO BOX 878	BLACKTOWN	NSW	2148
132	120/167//752025/8553/2030/R/	CORNELIA	DEERUBBIN	BAULKHAM HILLS	OTHER CROWN LAND	STATE LANDS SERVICES			PO BOX 878	BLACKTOWN	NSW	2148
133	120/17//77464////	CONCORD	METROPOLITAN	DRUMMOYNE	OTHER CROWN LAND	STATE LANDS SERVICES			PO BOX 878	BLACKTOWN	NSW	2148
134	120/17//825649////	PETERSHAM	METROPOLITAN	MARRICKVILLE	OTHER CROWN LAND	STATE LANDS SERVICES			PO BOX 878	BLACKTOWN	NSW	2148
135	120/171//752021////	CASTLEREAGH	DEERUBBIN	PENRITH	OTHER CROWN LAND	STATE LANDS SERVICES			PO BOX 878	BLACKTOWN	NSW	2148
136	120/173//752021////	CASTLEREAGH	DEERUBBIN	PENRITH	OTHER CROWN LAND	STATE LANDS SERVICES			PO BOX 878	BLACKTOWN	NSW	2148
137	120/173//752048////	NORTH COLAH	METROPOLITAN	HORNSBY	OTHER CROWN LAND	STATE LANDS SERVICES			PO BOX 878	BLACKTOWN	NSW	2148
138	120/174//752048////	NORTH COLAH	METROPOLITAN	HORNSBY	OTHER CROWN LAND	STATE LANDS SERVICES			PO BOX 878	BLACKTOWN	NSW	2148
139	120/175//752021////	CASTLEREAGH	DEERUBBIN	PENRITH	OTHER CROWN LAND	STATE LANDS SERVICES			PO BOX 878	BLACKTOWN	NSW	2148
140	120/176//47914////	BEROWRA	METROPOLITAN	HORNSBY	OTHER CROWN LAND	STATE LANDS SERVICES			PO BOX 878	BLACKTOWN	NSW	2148
141	120/176//752021////	CASTLEREAGH	DEERUBBIN	PENRITH	OTHER CROWN LAND	STATE LANDS SERVICES			PO BOX 878	BLACKTOWN	NSW	214
142	120/177//752021////	CASTLEREAGH	DEERUBBIN	PENRITH	OTHER OTHER CROWN LAND	STATE LANDS SERVICES			PO BOX 878	BLACKTOWN	NSW	2148
143	120/178//752021////	CASTLEREAGH	DEERUBBIN	PENRITH	OTHER CROWN LAND	STATE LANDS SERVICES			PO BOX 878	BLACKTOWN	NSW	2148
144	120/179//752021////	CASTLEREAGH	DEERUBBIN	PENRITH	OTHER CROWN LAND	STATE LANDS SERVICES			PO BOX 878	BLACKTOWN	NSW	214
145	120/179//822244////	ALEXANDRIA	LA PEROUSE	RANDWICK	OTHER CROWN LAND	STATE LANDS SERVICES			PO BOX 878	BLACKTOWN	NSW	2148
146	120/18//825649////	PETERSHAM	METROPOLITAN	MARRICKVILLE	OTHER CROWN LAND	STATE LANDS SERVICES			PO BOX 878	BLACKTOWN	NSW	2148
147	120/18/1/758558////	NELSON	DEERUBBIN	BAULKHAM HILLS	OTHER CROWN LAND	STATE LANDS SERVICES			PO BOX 878	BLACKTOWN	NSW	2148
148	120/18/9/758387////	STRATHDON	DEERUBBIN	PENRITH	OTHER CROWN LAND	STATE LANDS SERVICES			PO BOX 878	BLACKTOWN	NSW	2148
149	120/180//752021////	CASTLEREAGH	DEERUBBIN	PENRITH	OTHER CROWN LAND	STATE LANDS SERVICES			PO BOX 878	BLACKTOWN	NSW	2148
150	120/181//752021////	CASTLEREAGH	DEERUBBIN	PENRITH	OTHER CROWN LAND	STATE LANDS SERVICES			PO BOX 878	BLACKTOWN	NSW	2148
151	120/181//752039/4107/2030//	MAROOKA	DEERUBBIN	BAULKHAM HILLS	OTHER CROWN LAND	STATE LANDS SERVICES			PO BOX 878	BLACKTOWN	NSW	2148

DESCRIPTION					HOLDER/VESTEE/LESSEE/TRUSTEE			CONTACT ADDRESS DETAILS				
REF	PARCEL IDENTIFIER	PARISH	LALC	LGA	TYPE	ORG/SURNAME	GIVEN NAME	TITLE	ADDRESS1	TOWN	STATE	PC
152	120/182//752021////	CASTLEREAGH	DEERUBBIN	PENRITH	OTHER CROWN LAND	STATE LANDS SERVICES			PO BOX 878	BLACKTOWN	NSW	2148
153	120/182//752039////	MARROTA	DEERUBBIN	BAULKHAM HILLS	OTHER CROWN LAND	STATE LANDS SERVICES			PO BOX 878	BLACKTOWN	NSW	2148
154	120/183//752021////	CASTLEREAGH	DEERUBBIN	PENRITH	OTHER CROWN LAND	STATE LANDS SERVICES			PO BOX 878	BLACKTOWN	NSW	2148
155	120/183//752039/4106/2030//	MARROTA	DEERUBBIN	BAULKHAM HILLS	OTHER CROWN LAND	STATE LANDS SERVICES			PO BOX 878	BLACKTOWN	NSW	2148
156	120/184//752021////	CASTLEREAGH	DEERUBBIN	PENRITH	OTHER CROWN LAND	STATE LANDS SERVICES			PO BOX 878	BLACKTOWN	NSW	2148
157	120/185//752021////	CASTLEREAGH	DEERUBBIN	PENRITH	OTHER CROWN LAND	STATE LANDS SERVICES			PO BOX 878	BLACKTOWN	NSW	2148
158	120/186//39768////	HAM COMMON	DEERUBBIN	HAWKESBURY	OTHER CROWN LAND	STATE LANDS SERVICES			PO BOX 878	BLACKTOWN	NSW	2148
159	120/186//752021////	CASTLEREAGH	DEERUBBIN	PENRITH	OTHER CROWN LAND	STATE LANDS SERVICES			PO BOX 878	BLACKTOWN	NSW	2148
160	120/1863//700001////	ST JAMES	METROPOLITAN	SYDNEY	OTHER CROWN LAND	STATE LANDS SERVICES			PO BOX 878	BLACKTOWN	NSW	2148
161	120/187//752021////	CASTLEREAGH	DEERUBBIN	PENRITH	OTHER CROWN LAND	STATE LANDS SERVICES			PO BOX 878	BLACKTOWN	NSW	2148
162	120/188//752021////	CASTLEREAGH	DEERUBBIN	PENRITH	OTHER CROWN LAND	STATE LANDS SERVICES			PO BOX 878	BLACKTOWN	NSW	2148
163	120/189//752021////	CASTLEREAGH	DEERUBBIN	PENRITH	OTHER CROWN LAND	STATE LANDS SERVICES			PO BOX 878	BLACKTOWN	NSW	2148
164	120/190//751656////	MEEHAN	DEERUBBIN	HAWKESBURY	OTHER CROWN LAND	STATE LANDS SERVICES			PO BOX 878	BLACKTOWN	NSW	2148
165	120/190//752021////	CASTLEREAGH	DEERUBBIN	PENRITH	OTHER CROWN LAND	STATE LANDS SERVICES			PO BOX 878	BLACKTOWN	NSW	2148
166	120/191//752021////	CASTLEREAGH	DEERUBBIN	PENRITH	OTHER CROWN LAND	STATE LANDS SERVICES			PO BOX 878	BLACKTOWN	NSW	2148
167	120/194//752021////	CASTLEREAGH	DEERUBBIN	PENRITH	OTHER CROWN LAND	STATE LANDS SERVICES			PO BOX 878	BLACKTOWN	NSW	2148
168	120/194//752025////	CORNELIA	DEERUBBIN	BAULKHAM HILLS	OTHER CROWN LAND	STATE LANDS SERVICES			PO BOX 878	BLACKTOWN	NSW	2148
169	120/197//752021////	CASTLEREAGH	DEERUBBIN	PENRITH	OTHER CROWN LAND	STATE LANDS SERVICES			PO BOX 878	BLACKTOWN	NSW	2148
170	120/198//752021////	CASTLEREAGH	DEERUBBIN	PENRITH	OTHER CROWN LAND	STATE LANDS SERVICES			PO BOX 878	BLACKTOWN	NSW	2148
171	120/198//752039////	MARROTA	DEERUBBIN	BAULKHAM HILLS	OTHER CROWN LAND	STATE LANDS SERVICES			PO BOX 878	BLACKTOWN	NSW	2148
172	120/199//752021////	CASTLEREAGH	DEERUBBIN	PENRITH	OTHER CROWN LAND	STATE LANDS SERVICES			PO BOX 878	BLACKTOWN	NSW	2148
173	120/199//752048////	NORTH COLAH	METROPOLITAN	HORNSBY	OTHER CROWN LAND	STATE LANDS SERVICES			PO BOX 878	BLACKTOWN	NSW	2148
174	120/2//216322////	ST MATTHEW	DEERUBBIN	HAWKESBURY	OTHER CROWN LAND	STATE LANDS SERVICES			PO BOX 878	BLACKTOWN	NSW	2148
175	120/2//249704////	BRINGELLY	GANDANGARA	LIVERPOOL	OTHER CROWN LAND	STATE LANDS SERVICES			PO BOX 878	BLACKTOWN	NSW	2148
176	120/2//347829////	GIDLEY	DEERUBBIN	BLACKTOWN	OTHER CROWN LAND	STATE LANDS SERVICES			PO BOX 878	BLACKTOWN	NSW	2148
177	120/2//39760////	BOTANY	LA PEROUSE	RANDWICK	OTHER CROWN LAND	STATE LANDS SERVICES			PO BOX 878	BLACKTOWN	NSW	2148
178	120/2//41627////	ALEXANDRIA	LA PEROUSE	WAVERLEY	OTHER CROWN LAND	STATE LANDS SERVICES			PO BOX 878	BLACKTOWN	NSW	2148

DESCRIPTION					HOLDER/VESTEES/LESSEE/TRUSTEE			CONTACT ADDRESS DETAILS				
REF	PARCEL IDENTIFIER	PARISH	LALC	LGA	TYPE	ORG/SURNAME	GIVEN NAME	TITLE	ADDRESS1	TOWN	STATE	PC
179	120/2//562557////	CONCORD	METROPOLITAN	CONCORD	OTHER CROWN LAND	STATE LANDS SERVICES			PO BOX 878	BLACKTOWN	NSW	2148
180	120/2//592412////	JAMISON	DEERUBBIN	BLUE MOUNTAINS	OTHER CROWN LAND	STATE LANDS SERVICES			PO BOX 878	BLACKTOWN	NSW	2148
181	120/2//982390////	CONCORD	METROPOLITAN	DRUMMOYNE	OTHER CROWN LAND	STATE LANDS SERVICES			PO BOX 878	BLACKTOWN	NSW	2148
182	120/20//237206////	CONCORD	METROPOLITAN	DRUMMOYNE	OTHER CROWN LAND	STATE LANDS SERVICES			PO BOX 878	BLACKTOWN	NSW	2148
183	120/20//57637////	CONCORD	METROPOLITAN	DRUMMOYNE	OTHER CROWN LAND	STATE LANDS SERVICES			PO BOX 878	BLACKTOWN	NSW	2148
184	120/20/9//758387////	STRATHDON	DEERUBBIN	PENRITH	OTHER CROWN LAND	STATE LANDS SERVICES			PO BOX 878	BLACKTOWN	NSW	2148
185	120/200//752021////	CASTLEREAGH	DEERUBBIN	PENRITH	OTHER CROWN LAND	STATE LANDS SERVICES			PO BOX 878	BLACKTOWN	NSW	2148
186	120/200//752039/4702/2030//	MARROTA	DEERUBBIN	BAULKHAM HILLS	OTHER CROWN LAND	STATE LANDS SERVICES			PO BOX 878	BLACKTOWN	NSW	2148
187	120/201//751627////	BLACKHEATH	DEERUBBIN	BLUE MOUNTAINS	OTHER CROWN LAND	STATE LANDS SERVICES			PO BOX 878	BLACKTOWN	NSW	2148
188	120/201//752021////	CASTLEREAGH	DEERUBBIN	PENRITH	OTHER CROWN LAND	STATE LANDS SERVICES			PO BOX 878	BLACKTOWN	NSW	2148
189	120/201//752039/4958/2030//	MARROTA	DEERUBBIN	BAULKHAM HILLS	OTHER CROWN LAND	STATE LANDS SERVICES			PO BOX 878	BLACKTOWN	NSW	2148
190	120/202//47644////	MEEHAN	DEERUBBIN	HAWKESBURY	OTHER CROWN LAND	STATE LANDS SERVICES			PO BOX 878	BLACKTOWN	NSW	2148
191	120/202//751627////	BLACKHEATH	DEERUBBIN	BLUE MOUNTAINS	OTHER CROWN LAND	STATE LANDS SERVICES			PO BOX 878	BLACKTOWN	NSW	2148
192	120/202//752021////	CASTLEREAGH	DEERUBBIN	PENRITH	OTHER CROWN LAND	STATE LANDS SERVICES			PO BOX 878	BLACKTOWN	NSW	2148
193	120/203//751627////	BLACKHEATH	DEERUBBIN	BLUE MOUNTAINS	OTHER CROWN LAND	STATE LANDS SERVICES			PO BOX 878	BLACKTOWN	NSW	2148
194	120/205//751627////	BLACKHEATH	DEERUBBIN	BLUE MOUNTAINS	OTHER CROWN LAND	STATE LANDS SERVICES			PO BOX 878	BLACKTOWN	NSW	2148
195	120/206//751627////	BLACKHEATH	DEERUBBIN	BLUE MOUNTAINS	OTHER CROWN LAND	STATE LANDS SERVICES			PO BOX 878	BLACKTOWN	NSW	2148
196	120/206//752021////	CASTLEREAGH	DEERUBBIN	PENRITH	OTHER CROWN LAND	STATE LANDS SERVICES			PO BOX 878	BLACKTOWN	NSW	2148
197	120/206//752039////	MARROTA	DEERUBBIN	BAULKHAM HILLS	OTHER CROWN LAND	STATE LANDS SERVICES			PO BOX 878	BLACKTOWN	NSW	2148
198	120/207//751627////	BLACKHEATH	DEERUBBIN	BLUE MOUNTAINS	OTHER CROWN LAND	STATE LANDS SERVICES			PO BOX 878	BLACKTOWN	NSW	2148
199	120/208//751627////	BLACKHEATH	DEERUBBIN	BLUE MOUNTAINS	OTHER CROWN LAND	STATE LANDS SERVICES			PO BOX 878	BLACKTOWN	NSW	2148
200	120/208//752021////	CASTLEREAGH	DEERUBBIN	PENRITH	OTHER CROWN LAND	STATE LANDS SERVICES			PO BOX 878	BLACKTOWN	NSW	2148
201	120/208//752047/1423/2030//	NELSON	DEERUBBIN	BAULKHAM HILLS	OTHER CROWN LAND	STATE LANDS SERVICES			PO BOX 878	BLACKTOWN	NSW	2148
202	120/209//752021////	CASTLEREAGH	DEERUBBIN	PENRITH	OTHER CROWN LAND	STATE LANDS SERVICES			PO BOX 878	BLACKTOWN	NSW	2148
203	120/21//57637////	CONCORD	METROPOLITAN	DRUMMOYNE	OTHER CROWN LAND	STATE LANDS SERVICES			PO BOX 878	BLACKTOWN	NSW	2148
204	120/210//752021////	CASTLEREAGH	DEERUBBIN	PENRITH	OTHER CROWN LAND	STATE LANDS SERVICES			PO BOX 878	BLACKTOWN	NSW	2148
205	120/210//752039////	MARROTA	DEERUBBIN	BAULKHAM HILLS	OTHER CROWN LAND	STATE LANDS SERVICES			PO BOX 878	BLACKTOWN	NSW	2148

DESCRIPTION												
REF	PARCEL IDENTIFIER	PARISH	LALC	LGA	TYPE	HOLDER/VESTEE/LESSEE/TRUSTEE	GIVEN NAME	TITLE	CONTACT ADDRESS DETAILS			
						ORG/SURNAME			ADDRESS1	TOWN	STATE	PC
206	120/211//751627////	BLACKHEATH	DEERUBBIN	BLUE MOUNTAINS	OTHER CROWN LAND	STATE LANDS SERVICES			PO BOX 878	BLACKTOWN	NSW	2148
207	120/212//751627////	BLACKHEATH	DEERUBBIN	BLUE MOUNTAINS	OTHER CROWN LAND	STATE LANDS SERVICES			PO BOX 878	BLACKTOWN	NSW	2148
208	120/212//752025////	CORNELIA	DEERUBBIN	BAULKHAM HILLS	OTHER CROWN LAND	STATE LANDS SERVICES			PO BOX 878	BLACKTOWN	NSW	2148
209	120/213//751627////	BLACKHEATH	DEERUBBIN	BLUE MOUNTAINS	OTHER CROWN LAND	STATE LANDS SERVICES			PO BOX 878	BLACKTOWN	NSW	2148
210	120/214//751627////	BLACKHEATH	DEERUBBIN	BLUE MOUNTAINS	OTHER CROWN LAND	STATE LANDS SERVICES			PO BOX 878	BLACKTOWN	NSW	2148
211	120/215//751627////	BLACKHEATH	DEERUBBIN	BLUE MOUNTAINS	OTHER CROWN LAND	STATE LANDS SERVICES			PO BOX 878	BLACKTOWN	NSW	2148
212	120/216//751627////	BLACKHEATH	DEERUBBIN	BLUE MOUNTAINS	OTHER CROWN LAND	STATE LANDS SERVICES			PO BOX 878	BLACKTOWN	NSW	2148
213	120/217//751627////	BLACKHEATH	DEERUBBIN	BLUE MOUNTAINS	OTHER CROWN LAND	STATE LANDS SERVICES			PO BOX 878	BLACKTOWN	NSW	2148
214	120/218//752039////	MARROTA	DEERUBBIN	BAULKHAM HILLS	OTHER CROWN LAND	STATE LANDS SERVICES			PO BOX 878	BLACKTOWN	NSW	2148
215	120/219//751627////	BLACKHEATH	DEERUBBIN	BLUE MOUNTAINS	OTHER CROWN LAND	STATE LANDS SERVICES			PO BOX 878	BLACKTOWN	NSW	2148
216	120/219//752039/7371/2030//	MARROTA	DEERUBBIN	BAULKHAM HILLS	OTHER CROWN LAND	STATE LANDS SERVICES			PO BOX 878	BLACKTOWN	NSW	2148
217	120/22//939734////	CONCORD	METROPOLITAN	DRUMMOYNE	OTHER CROWN LAND	STATE LANDS SERVICES			PO BOX 878	BLACKTOWN	NSW	2148
218	120/220//752021////	CASTLEREAGH	DEERUBBIN	PENRITH	OTHER CROWN LAND	STATE LANDS SERVICES			PO BOX 878	BLACKTOWN	NSW	2148
219	120/221//751627////	BLACKHEATH	DEERUBBIN	BLUE MOUNTAINS	OTHER CROWN LAND	STATE LANDS SERVICES			PO BOX 878	BLACKTOWN	NSW	2148
220	120/222//751627////	BLACKHEATH	DEERUBBIN	BLUE MOUNTAINS	OTHER CROWN LAND	STATE LANDS SERVICES			PO BOX 878	BLACKTOWN	NSW	2148
221	120/223//751627////	BLACKHEATH	DEERUBBIN	BLUE MOUNTAINS	OTHER CROWN LAND	STATE LANDS SERVICES			PO BOX 878	BLACKTOWN	NSW	2148
222	120/224//751627////	BLACKHEATH	DEERUBBIN	BLUE MOUNTAINS	OTHER CROWN LAND	STATE LANDS SERVICES			PO BOX 878	BLACKTOWN	NSW	2148
223	120/225//751627////	BLACKHEATH	DEERUBBIN	BLUE MOUNTAINS	OTHER CROWN LAND	STATE LANDS SERVICES			PO BOX 878	BLACKTOWN	NSW	2148
224	120/228//751627////	BLACKHEATH	DEERUBBIN	BLUE MOUNTAINS	OTHER CROWN LAND	STATE LANDS SERVICES			PO BOX 878	BLACKTOWN	NSW	2148
225	120/228//751627////	BLACKHEATH	DEERUBBIN	BLUE MOUNTAINS	OTHER CROWN LAND	STATE LANDS SERVICES			PO BOX 878	BLACKTOWN	NSW	2148
226	120/229//751627////	BLACKHEATH	DEERUBBIN	BLUE MOUNTAINS	OTHER CROWN LAND	STATE LANDS SERVICES			PO BOX 878	BLACKTOWN	NSW	2148
227	120/231//752021////	CASTLEREAGH	DEERUBBIN	PENRITH	OTHER CROWN LAND	STATE LANDS SERVICES			PO BOX 878	BLACKTOWN	NSW	2148
228	120/231//752039////	MARROTA	DEERUBBIN	BAULKHAM HILLS	OTHER CROWN LAND	STATE LANDS SERVICES			PO BOX 878	BLACKTOWN	NSW	2148
229	120/236//752048////	NORTH COLAH	METROPOLITAN	HORNSBY	OTHER CROWN LAND	STATE LANDS SERVICES			PO BOX 878	BLACKTOWN	NSW	2148
230	120/237//751649/	KURRAJONG	DEERUBBIN	HAWKESBURY	OTHER CROWN LAND	STATE LANDS SERVICES			PO BOX 878	BLACKTOWN	NSW	2148
231	120/240//752039////	MARROTA	DEERUBBIN	BAULKHAM HILLS	OTHER CROWN LAND	STATE LANDS SERVICES			PO BOX 878	BLACKTOWN	NSW	2148
232	120/240//752048////	NORTH COLAH	METROPOLITAN	HORNSBY	OTHER CROWN LAND	STATE LANDS SERVICES			PO BOX 878	BLACKTOWN	NSW	2148

DESCRIPTION					HOLDER/VESTEE/LESSEE/TRUSTEE			CONTACT ADDRESS DETAILS				
REF	PARCEL IDENTIFIER	PARISH	LALC	LGA	TYPE	ORG/SURNAME	GIVEN NAME	TITLE	ADDRESS1	TOWN	STATE	PC
233	120/241//752039////	MARROTA	DEERUBBIN	BAULKHAM HILLS	OTHER CROWN LAND	STATE LANDS SERVICES			PO BOX 878	BLACKTOWN	NSW	2148
234	120/245//752025////	CORNELIA	DEERUBBIN	BAULKHAM HILLS	OTHER CROWN LAND	STATE LANDS SERVICES			PO BOX 878	BLACKTOWN	NSW	2148
235	120/247//752039/10609/2030//	MARROTA	DEERUBBIN	BAULKHAM HILLS	OTHER CROWN LAND	STATE LANDS SERVICES			PO BOX 878	BLACKTOWN	NSW	2148
236	120/252//751662////	STRATHDON	DEERUBBIN	BLUE MOUNTAINS	OTHER CROWN LAND	STATE LANDS SERVICES			PO BOX 878	BLACKTOWN	NSW	2148
237	120/258//729633////	CORNELIA	DEERUBBIN	BAULKHAM HILLS	OTHER CROWN LAND	STATE LANDS SERVICES			PO BOX 878	BLACKTOWN	NSW	2148
238	120/26//752040////	MARRAMARRA	METROPOLITAN	HORNSBY	OTHER CROWN LAND	STATE LANDS SERVICES			PO BOX 878	BLACKTOWN	NSW	2148
239	120/260//859029////	NORTH COLAH	METROPOLITAN	HORNSBY	OTHER CROWN LAND	STATE LANDS SERVICES			PO BOX 878	BLACKTOWN	NSW	2148
240	120/261//859029////	NORTH COLAH	METROPOLITAN	HORNSBY	OTHER CROWN LAND	STATE LANDS SERVICES			PO BOX 878	BLACKTOWN	NSW	2148
241	120/2658//752015////	BOTANY	LA PEROUSE	RANDWICK	OTHER CROWN LAND	STATE LANDS SERVICES			PO BOX 878	BLACKTOWN	NSW	2148
242	120/276//752021////	CASTLEREAGH	DEERUBBIN	PENRITH	OTHER CROWN LAND	STATE LANDS SERVICES			PO BOX 878	BLACKTOWN	NSW	2148
243	120/277//752021////	CASTLEREAGH	DEERUBBIN	PENRITH	OTHER CROWN LAND	STATE LANDS SERVICES			PO BOX 878	BLACKTOWN	NSW	2148
244	120/278//752021////	CASTLEREAGH	DEERUBBIN	PENRITH	OTHER CROWN LAND	STATE LANDS SERVICES			PO BOX 878	BLACKTOWN	NSW	2148
245	120/2816//752015////	BOTANY	LA PEROUSE	RANDWICK	OTHER CROWN LAND	STATE LANDS SERVICES			PO BOX 878	BLACKTOWN	NSW	2148
246	120/295//752047////	NELSON	DEERUBBIN	BAULKHAM HILLS	OTHER CROWN LAND	STATE LANDS SERVICES			PO BOX 878	BLACKTOWN	NSW	2148
247	120/3//211148////	BANKSTOWN	GANDANGARA	BANKSTOWN	OTHER CROWN LAND	STATE LANDS SERVICES			PO BOX 878	BLACKTOWN	NSW	2148
248	120/3//39760////	BOTANY	LA PEROUSE	RANDWICK	OTHER CROWN LAND	STATE LANDS SERVICES			PO BOX 878	BLACKTOWN	NSW	2148
249	120/3//41627////	ALEXANDRIA	LA PEROUSE	WAVERLEY	OTHER CROWN LAND	STATE LANDS SERVICES			PO BOX 878	BLACKTOWN	NSW	2148
250	120/3//706164////	BOTANY	LA PEROUSE	RANDWICK	OTHER CROWN LAND	STATE LANDS SERVICES			PO BOX 878	BLACKTOWN	NSW	2148
251	120/3//820355////	MEEHAN	DEERUBBIN	HAWKESBURY	OTHER CROWN LAND	STATE LANDS SERVICES			PO BOX 878	BLACKTOWN	NSW	2148
252	120/3//820392////	MERROO	DEERUBBIN	HAWKESBURY	OTHER CROWN LAND	STATE LANDS SERVICES			PO BOX 878	BLACKTOWN	NSW	2148
253	120/3//9//758387////	STRATHDON	DEERUBBIN	PENRITH	OTHER CROWN LAND	STATE LANDS SERVICES			PO BOX 878	BLACKTOWN	NSW	2148
254	120/30//751627////	BLACKHEATH	DEERUBBIN	BLUE MOUNTAINS	OTHER CROWN LAND	STATE LANDS SERVICES			PO BOX 878	BLACKTOWN	NSW	2148
255	120/30//751670////	WOODFORD	DEERUBBIN	BLUE MOUNTAINS	OTHER CROWN LAND	STATE LANDS SERVICES			PO BOX 878	BLACKTOWN	NSW	2148
256	120/302//729721////	BANKSTOWN	GANDANGARA	BANKSTOWN	OTHER CROWN LAND	STATE LANDS SERVICES			PO BOX 878	BLACKTOWN	NSW	2148
257	120/306//752047////	NELSON	DEERUBBIN	BAULKHAM HILLS	OTHER CROWN LAND	STATE LANDS SERVICES			PO BOX 878	BLACKTOWN	NSW	2148
258	120/32//751670////	WOODFORD	DEERUBBIN	BLUE MOUNTAINS	OTHER CROWN LAND	STATE LANDS SERVICES			PO BOX 878	BLACKTOWN	NSW	2148
259	120/323//751646////	JAMISON	DEERUBBIN	BLUE MOUNTAINS	OTHER CROWN LAND	STATE LANDS SERVICES			PO BOX 878	BLACKTOWN	NSW	2148

DESCRIPTION													
REF	PARCEL IDENTIFIER	PARISH	LALC	LGA	TYPE	HOLDER/VESTEE/LESSEE/TRUSTEE			CONTACT ADDRESS DETAILS				
						ORG/SURNAME	GIVEN NAME	TITLE	ADDRESS1	TOWN	STATE	PC	
260	120/324//751646////	JAMISON	DEERUBBIN	BLUE MOUNTAINS	OTHER CROWN LAND	STATE LANDS SERVICES				PO BOX 878	BLACKTOWN	NSW	2148
261	120/324//752021////	CASTLEREAGH	DEERUBBIN	PENRITH	OTHER CROWN LAND	STATE LANDS SERVICES				PO BOX 878	BLACKTOWN	NSW	2148
262	120/325//751646////	JAMISON	DEERUBBIN	BLUE MOUNTAINS	OTHER CROWN LAND	STATE LANDS SERVICES				PO BOX 878	BLACKTOWN	NSW	2148
263	120/326//751646////	JAMISON	DEERUBBIN	BLUE MOUNTAINS	OTHER CROWN LAND	STATE LANDS SERVICES				PO BOX 878	BLACKTOWN	NSW	214
264	120/326//752021////	CASTLEREAGH	DEERUBBIN	PENRITH	OTHER CROWN LAND	STATE LANDS SERVICES				PO BOX 878	BLACKTOWN	NSW	2148
265	120/327//751646////	JAMISON	DEERUBBIN	BLUE MOUNTAINS	OTHER CROWN LAND	STATE LANDS SERVICES				PO BOX 878	BLACKTOWN	NSW	2148
266	120/327//752021////	CASTLEREAGH	DEERUBBIN	PENRITH	OTHER CROWN LAND	STATE LANDS SERVICES				PO BOX 878	BLACKTOWN	NSW	2148
267	120/328//751646////	JAMISON	DEERUBBIN	BLUE MOUNTAINS	OTHER CROWN LAND	STATE LANDS SERVICES				PO BOX 878	BLACKTOWN	NSW	2148
268	120/329//751646////	JAMISON	DEERUBBIN	BLUE MOUNTAINS	OTHER CROWN LAND	STATE LANDS SERVICES				PO BOX 878	BLACKTOWN	NSW	2148
269	120/33//751670////	WOODFORD	DEERUBBIN	BLUE MOUNTAINS	OTHER CROWN LAND	STATE LANDS SERVICES				PO BOX 878	BLACKTOWN	NSW	2148
270	120/330//751646////	JAMISON	DEERUBBIN	BLUE MOUNTAINS	OTHER CROWN LAND	STATE LANDS SERVICES				PO BOX 878	BLACKTOWN	NSW	2148
271	120/330//752021////	CASTLEREAGH	DEERUBBIN	PENRITH	OTHER CROWN LAND	STATE LANDS SERVICES				PO BOX 878	BLACKTOWN	NSW	2148
272	120/331//751646////	JAMISON	DEERUBBIN	BLUE MOUNTAINS	OTHER CROWN LAND	STATE LANDS SERVICES				PO BOX 878	BLACKTOWN	NSW	2148
273	120/331//752021////	CASTLEREAGH	DEERUBBIN	PENRITH	OTHER CROWN LAND	STATE LANDS SERVICES				PO BOX 878	BLACKTOWN	NSW	2148
274	120/332//751646////	JAMISON	DEERUBBIN	BLUE MOUNTAINS	OTHER CROWN LAND	STATE LANDS SERVICES				PO BOX 878	BLACKTOWN	NSW	2148
275	120/333//47653////	KURRAJONG	DEERUBBIN	HAWKESBURY	OTHER CROWN LAND	STATE LANDS SERVICES				PO BOX 878	BLACKTOWN	NSW	2148
276	120/333//751646////	JAMISON	DEERUBBIN	BLUE MOUNTAINS	OTHER CROWN LAND	STATE LANDS SERVICES				PO BOX 878	BLACKTOWN	NSW	2148
277	120/333//752021////	CASTLEREAGH	DEERUBBIN	PENRITH	OTHER CROWN LAND	STATE LANDS SERVICES				PO BOX 878	BLACKTOWN	NSW	2148
278	120/334//751646////	JAMISON	DEERUBBIN	BLUE MOUNTAINS	OTHER CROWN LAND	STATE LANDS SERVICES				PO BOX 878	BLACKTOWN	NSW	2148
279	120/334//752021////	CASTLEREAGH	DEERUBBIN	PENRITH	OTHER CROWN LAND	STATE LANDS SERVICES				PO BOX 878	BLACKTOWN	NSW	2148
280	120/335//751646////	JAMISON	DEERUBBIN	BLUE MOUNTAINS	OTHER CROWN LAND	STATE LANDS SERVICES				PO BOX 878	BLACKTOWN	NSW	2148
281	120/335//752021////	CASTLEREAGH	DEERUBBIN	PENRITH	OTHER CROWN LAND	STATE LANDS SERVICES				PO BOX 878	BLACKTOWN	NSW	2148
282	120/336//751646////	JAMISON	DEERUBBIN	BLUE MOUNTAINS	OTHER CROWN LAND	STATE LANDS SERVICES				PO BOX 878	BLACKTOWN	NSW	2148
283	120/336//752021////	CASTLEREAGH	DEERUBBIN	PENRITH	OTHER CROWN LAND	STATE LANDS SERVICES				PO BOX 878	BLACKTOWN	NSW	2148
284	120/337//751644////	HARTLEY	DEERUBBIN	BLUE MOUNTAINS	OTHER CROWN LAND	STATE LANDS SERVICES				PO BOX 878	BLACKTOWN	NSW	2148
285	120/337//751646////	JAMISON	DEERUBBIN	BLUE MOUNTAINS	OTHER CROWN LAND	STATE LANDS SERVICES				PO BOX 878	BLACKTOWN	NSW	2148
286	120/338//751646////	JAMISON	DEERUBBIN	BLUE MOUNTAINS	OTHER CROWN LAND	STATE LANDS SERVICES				PO BOX 878	BLACKTOWN	NSW	2148

DESCRIPTION					HOLDER/VESTEE/LESSEE/TRUSTEE			CONTACT ADDRESS DETAILS				
REF	PARCEL IDENTIFIER	PARISH	LALC	LGA	TYPE	ORG/SURNAME	GIVEN NAME	TITLE	ADDRESS1	TOWN	STATE	PC
287	120/339//751646////	JAMISON	DEERUBBIN	BLUE MOUNTAINS	OTHER CROWN LAND	STATE LANDS SERVICES			PO BOX 878	BLACKTOWN	NSW	2148
288	120/339//752021////	CASTLEREAGH	DEERUBBIN	PENRITH	OTHER CROWN LAND	STATE LANDS SERVICES			PO BOX 878	BLACKTOWN	NSW	2148
289	120/340//751646////	JAMISON	DEERUBBIN	BLUE MOUNTAINS	OTHER CROWN LAND	STATE LANDS SERVICES			PO BOX 878	BLACKTOWN	NSW	2148
290	120/340//752021////	CASTLEREAGH	DEERUBBIN	PENRITH	OTHER CROWN LAND	STATE LANDS SERVICES			PO BOX 878	BLACKTOWN	NSW	2148
291	120/341//751646////	JAMISON	DEERUBBIN	BLUE MOUNTAINS	OTHER CROWN LAND	STATE LANDS SERVICES			PO BOX 878	BLACKTOWN	NSW	2148
292	120/341//752021////	CASTLEREAGH	DEERUBBIN	PENRITH	OTHER CROWN LAND	STATE LANDS SERVICES			PO BOX 878	BLACKTOWN	NSW	2148
293	120/342//751646////	JAMISON	DEERUBBIN	BLUE MOUNTAINS	OTHER CROWN LAND	STATE LANDS SERVICES			PO BOX 878	BLACKTOWN	NSW	2148
294	120/343//751646////	JAMISON	DEERUBBIN	BLUE MOUNTAINS	OTHER CROWN LAND	STATE LANDS SERVICES			PO BOX 878	BLACKTOWN	NSW	2148
295	120/344//751646////	JAMISON	DEERUBBIN	BLUE MOUNTAINS	OTHER CROWN LAND	STATE LANDS SERVICES			PO BOX 878	BLACKTOWN	NSW	2148
296	120/346//752021////	CASTLEREAGH	DEERUBBIN	PENRITH	OTHER CROWN LAND	STATE LANDS SERVICES			PO BOX 878	BLACKTOWN	NSW	2148
297	120/347//752021////	CASTLEREAGH	DEERUBBIN	PENRITH	OTHER CROWN LAND	STATE LANDS SERVICES			PO BOX 878	BLACKTOWN	NSW	2148
298	120/348//752021////	CASTLEREAGH	DEERUBBIN	PENRITH	OTHER CROWN LAND	STATE LANDS SERVICES			PO BOX 878	BLACKTOWN	NSW	2148
299	120/354//751646////	JAMISON	DEERUBBIN	BLUE MOUNTAINS	OTHER CROWN LAND	STATE LANDS SERVICES			PO BOX 878	BLACKTOWN	NSW	2148
300	120/354//752021////	CASTLEREAGH	DEERUBBIN	PENRITH	OTHER CROWN LAND	STATE LANDS SERVICES			PO BOX 878	BLACKTOWN	NSW	2148
301	120/355//751646////	JAMISON	DEERUBBIN	BLUE MOUNTAINS	OTHER CROWN LAND	STATE LANDS SERVICES			PO BOX 878	BLACKTOWN	NSW	2148
302	120/356//751646////	JAMISON	DEERUBBIN	BLUE MOUNTAINS	OTHER CROWN LAND	STATE LANDS SERVICES			PO BOX 878	BLACKTOWN	NSW	2148
303	120/357//751646////	JAMISON	DEERUBBIN	BLUE MOUNTAINS	OTHER CROWN LAND	STATE LANDS SERVICES			PO BOX 878	BLACKTOWN	NSW	2148
304	120/357//752056////	ST GEORGE	METROPOLITAN	KOGARAH	OTHER CROWN LAND	STATE LANDS SERVICES			PO BOX 878	BLACKTOWN	NSW	2148
305	120/358//751646////	JAMISON	DEERUBBIN	BLUE MOUNTAINS	OTHER CROWN LAND	STATE LANDS SERVICES			PO BOX 878	BLACKTOWN	NSW	2148
306	120/359//751646////	JAMISON	DEERUBBIN	BLUE MOUNTAINS	OTHER CROWN LAND	STATE LANDS SERVICES			PO BOX 878	BLACKTOWN	NSW	2148
307	120/359//752056////	ST GEORGE	METROPOLITAN	KOGARAH	OTHER CROWN LAND	STATE LANDS SERVICES			PO BOX 878	BLACKTOWN	NSW	2148
308	120/360//751646////	JAMISON	DEERUBBIN	BLUE MOUNTAINS	OTHER CROWN LAND	STATE LANDS SERVICES			PO BOX 878	BLACKTOWN	NSW	2148
309	120/361//751646////	JAMISON	DEERUBBIN	BLUE MOUNTAINS	OTHER CROWN LAND	STATE LANDS SERVICES			PO BOX 878	BLACKTOWN	NSW	2148
310	120/362//751646////	JAMISON	DEERUBBIN	BLUE MOUNTAINS	OTHER CROWN LAND	STATE LANDS SERVICES			PO BOX 878	BLACKTOWN	NSW	2148
311	120/371//751627////	BLACKHEATH	DEERUBBIN	BLUE MOUNTAINS	OTHER CROWN LAND	STATE LANDS SERVICES			PO BOX 878	BLACKTOWN	NSW	2148
312	120/382//751627////	BLACKHEATH	DEERUBBIN	BLUE MOUNTAINS	OTHER CROWN LAND	STATE LANDS SERVICES			PO BOX 878	BLACKTOWN	NSW	2148
313	120/383//751627////	BLACKHEATH	DEERUBBIN	BLUE MOUNTAINS	OTHER CROWN LAND	STATE LANDS SERVICES			PO BOX 878	BLACKTOWN	NSW	2148

DESCRIPTION													
REF	PARCEL IDENTIFIER	PARISH	LALC	LGA	TYPE'	HOLDER/VESTEE/LESSEE/TRUSTEE			CONTACT ADDRESS DETAILS				
						ORG/SURNAME	GIVEN NAME	TITLE	ADDRESS1	TOWN	STATE	PC	
314	120/387//752047////	NELSON	DEERUBBIN	BAULKHAM HILLS	OTHER CROWN LAND	STATE LANDS SERVICES				PO BOX 878	BLACKTOWN	NSW	2148
315	120/395//752047////	NELSON	DEERUBBIN	BAULKHAM HILLS	OTHER CROWN LAND	STATE LANDS SERVICES				PO BOX 878	BLACKTOWN	NSW	2148
316	120/4//41627////	ALEXANDRIA	LA PEROUSE	WAVERLEY	OTHER CROWN LAND	STATE LANDS SERVICES				PO BOX 878	BLACKTOWN	NSW	2148
317	120/4//57637////	CONCORD	METROPOLITAN	DRUMMOYNE	OTHER CROWN LAND	STATE LANDS SERVICES				PO BOX 878	BLACKTOWN	NSW	2148
318	120/4//739331////	PROSPECT	DEERUBBIN	BLACKTOWN	OTHER CROWN LAND	STATE LANDS SERVICES				PO BOX 878	BLACKTOWN	NSW	2148
319	120/4/9//758387////	STRATHDON	DEERUBBIN	PENRITH	OTHER CROWN LAND	STATE LANDS SERVICES				PO BOX 878	BLACKTOWN	NSW	2148
320	120/401//752011////	ALEXANDRIA	LA PEROUSE	RANDWICK	OTHER CROWN LAND	STATE LANDS SERVICES				PO BOX 878	BLACKTOWN	NSW	2148
321	120/41//752025////	CORNELIA	DEERUBBIN	BAULKHAM HILLS	OTHER CROWN LAND	STATE LANDS SERVICES				PO BOX 878	BLACKTOWN	NSW	2148
322	120/410//752056////	ST GEORGE	METROPOLITAN	KOGARAH	OTHER CROWN LAND	STATE LANDS SERVICES				PO BOX 878	BLACKTOWN	NSW	2148
323	120/411//752056////	ST GEORGE	METROPOLITAN	KOGARAH	OTHER CROWN LAND	STATE LANDS SERVICES				PO BOX 878	BLACKTOWN	NSW	2148
324	120/412//721589////	ST PETER	THARAWAL	CAMPBELLTOWN	OTHER CROWN LAND	STATE LANDS SERVICES				PO BOX 878	BLACKTOWN	NSW	2148
325	120/412//752056////	ST GEORGE	METROPOLITAN	KOGARAH	OTHER CROWN LAND	STATE LANDS SERVICES				PO BOX 878	BLACKTOWN	NSW	2148
326	120/422//752056////	ST GEORGE	METROPOLITAN	HURSTVILLE	OTHER CROWN LAND	STATE LANDS SERVICES				PO BOX 878	BLACKTOWN	NSW	2148
327	120/4310//752015////	BOTANY	LA PEROUSE	RANDWICK	OTHER CROWN LAND	STATE LANDS SERVICES				PO BOX 878	BLACKTOWN	NSW	2148
328	120/434//752056////	ST GEORGE	METROPOLITAN	KOGARAH	OTHER CROWN LAND	STATE LANDS SERVICES				PO BOX 878	BLACKTOWN	NSW	2148
329	120/456//752036////	LIBERTY PLAINS	GANDANGARA	BANKSTOWN	OTHER CROWN LAND	STATE LANDS SERVICES				PO BOX 878	BLACKTOWN	NSW	2148
330	120/46//751627////	BLACKHEATH	DEERUBBIN	BLUE MOUNTAINS	OTHER CROWN LAND	STATE LANDS SERVICES				PO BOX 878	BLACKTOWN	NSW	2148
331	120/46//752016////	BRINGELLY	DEERUBBIN	PENRITH	OTHER CROWN LAND	STATE LANDS SERVICES				PO BOX 878	BLACKTOWN	NSW	2148
332	120/469//752056////	ST GEORGE	METROPOLITAN	KOGARAH	OTHER CROWN LAND	STATE LANDS SERVICES				PO BOX 878	BLACKTOWN	NSW	2148
333	120/478//752056////	ST GEORGE	METROPOLITAN	ROCKDALE	OTHER CROWN LAND	STATE LANDS SERVICES				PO BOX 878	BLACKTOWN	NSW	2148
334	120/4789//752015////	BOTANY	LA PEROUSE	RANDWICK	OTHER CROWN LAND	STATE LANDS SERVICES				PO BOX 878	BLACKTOWN	NSW	2148
335	120/4807//752015////	BOTANY	LA PEROUSE	RANDWICK	OTHER CROWN LAND	STATE LANDS SERVICES				PO BOX 878	BLACKTOWN	NSW	2148
336	120/481//752056////	ST GEORGE	METROPOLITAN	HURSTVILLE	OTHER CROWN LAND	STATE LANDS SERVICES				PO BOX 878	BLACKTOWN	NSW	2148
337	120/4858//752015////	BOTANY	LA PEROUSE	RANDWICK	OTHER CROWN LAND	STATE LANDS SERVICES				PO BOX 878	BLACKTOWN	NSW	2148
338	120/494//704503////	CONCORD	METROPOLITAN	CONCORD	OTHER CROWN LAND	STATE LANDS SERVICES				PO BOX 878	BLACKTOWN	NSW	2148
339	120/4A//57637////	CONCORD	METROPOLITAN	DRUMMOYNE	OTHER CROWN LAND	STATE LANDS SERVICES				PO BOX 878	BLACKTOWN	NSW	2148
340	120/5//57637////	CONCORD	METROPOLITAN	DRUMMOYNE	OTHER CROWN LAND	STATE LANDS SERVICES				PO BOX 878	BLACKTOWN	NSW	2148

DESCRIPTION						HOLDER/VESSEE/LESSEE/TRUSTEE			CONTACT ADDRESS DETAILS			
REF	PARCEL IDENTIFIER	PARISH	LALC	LGA	TYPE	ORG/SURNAME	GIVEN NAME	TITLE	ADDRESS1	TOWN	STATE	PC
341	120/5//739331////	PROSPECT	DEERUBBIN	BLACKTOWN	OTHER CROWN LAND	STATE LANDS SERVICES			PO BOX 878	BLACKTOWN	NSW	2148
342	120/5//746934////	LIBERTY PLAINS	METROPOLITAN	STRATHFIELD	OTHER CROWN LAND	STATE LANDS SERVICES			PO BOX 878	BLACKTOWN	NSW	2148
343	120/5/9//758387////	STRATHDON	DEERUBBIN	PENRITH	OTHER CROWN LAND	STATE LANDS SERVICES			PO BOX 878	BLACKTOWN	NSW	2148
344	120/500//751627////	BLACKHEATH	DEERUBBIN	BLUE MOUNTAINS	OTHER CROWN LAND	STATE LANDS SERVICES			PO BOX 878	BLACKTOWN	NSW	2148
345	120/509//729627////	CONCORD	METROPOLITAN	CONCORD	OTHER CROWN LAND	STATE LANDS SERVICES			PO BOX 878	BLACKTOWN	NSW	2148
346	120/518//751648////	JAMISON	DEERUBBIN	BLUE MOUNTAINS	OTHER CROWN LAND	STATE LANDS SERVICES			PO BOX 878	BLACKTOWN	NSW	2148
347	120/518//752058////	ST GEORGE	METROPOLITAN	KOGARAH	OTHER CROWN LAND	STATE LANDS SERVICES			PO BOX 878	BLACKTOWN	NSW	2148
348	120/519//752058////	ST GEORGE	METROPOLITAN	KOGARAH	OTHER CROWN LAND	STATE LANDS SERVICES			PO BOX 878	BLACKTOWN	NSW	2148
349	120/520//752056////	ST GEORGE	METROPOLITAN	KOGARAH	OTHER CROWN LAND	STATE LANDS SERVICES			PO BOX 878	BLACKTOWN	NSW	2148
350	120/521//752056////	ST GEORGE	METROPOLITAN	KOGARAH	OTHER CROWN LAND	STATE LANDS SERVICES			PO BOX 878	BLACKTOWN	NSW	2148
351	120/522//751646////	JAMISON	DEERUBBIN	BLUE MOUNTAINS	OTHER CROWN LAND	STATE LANDS SERVICES			PO BOX 878	BLACKTOWN	NSW	2148
352	120/522//752056////	ST GEORGE	METROPOLITAN	KOGARAH	OTHER CROWN LAND	STATE LANDS SERVICES			PO BOX 878	BLACKTOWN	NSW	2148
353	120/5229//809179////	BOTANY	LA PEROUSE	RANDWICK	OTHER CROWN LAND	STATE LANDS SERVICES			PO BOX 878	BLACKTOWN	NSW	2148
354	120/523//751627////	BLACKHEATH	DEERUBBIN	BLUE MOUNTAINS	OTHER CROWN LAND	STATE LANDS SERVICES			PO BOX 878	BLACKTOWN	NSW	2148
355	120/523//752056////	ST GEORGE	METROPOLITAN	KOGARAH	OTHER CROWN LAND	STATE LANDS SERVICES			PO BOX 878	BLACKTOWN	NSW	2148
356	120/524//752056////	ST GEORGE	METROPOLITAN	KOGARAH	OTHER CROWN LAND	STATE LANDS SERVICES			PO BOX 878	BLACKTOWN	NSW	2148
357	120/5244//820345////	BOTANY	LA PEROUSE	RANDWICK	OTHER CROWN LAND	STATE LANDS SERVICES			PO BOX 878	BLACKTOWN	NSW	2148
358	120/5245//820345////	BOTANY	LA PEROUSE	RANDWICK	OTHER CROWN LAND	STATE LANDS SERVICES			PO BOX 878	BLACKTOWN	NSW	2148
359	120/525//752056////	ST GEORGE	METROPOLITAN	KOGARAH	OTHER CROWN LAND	STATE LANDS SERVICES			PO BOX 878	BLACKTOWN	NSW	2148
360	120/5255//824002////	BOTANY	LA PEROUSE	RANDWICK	OTHER CROWN LAND	STATE LANDS SERVICES			PO BOX 878	BLACKTOWN	NSW	2148
361	120/526//752056////	ST GEORGE	METROPOLITAN	KOGARAH	OTHER CROWN LAND	STATE LANDS SERVICES			PO BOX 878	BLACKTOWN	NSW	2148
362	120/5263//824057////	BOTANY	LA PEROUSE	RANDWICK	OTHER CROWN LAND	STATE LANDS SERVICES			PO BOX 878	BLACKTOWN	NSW	2148
363	120/5264//824057////	BOTANY	LA PEROUSE	RANDWICK	OTHER CROWN LAND	STATE LANDS SERVICES			PO BOX 878	BLACKTOWN	NSW	2148
364	120/5265//824057////	BOTANY	LA PEROUSE	RANDWICK	OTHER CROWN LAND	STATE LANDS SERVICES			PO BOX 878	BLACKTOWN	NSW	2148
365	120/5266//824057////	BOTANY	LA PEROUSE	RANDWICK	OTHER CROWN LAND	STATE LANDS SERVICES			PO BOX 878	BLACKTOWN	NSW	2148
366	120/5267//824057////	BOTANY	LA PEROUSE	RANDWICK	OTHER CROWN LAND	STATE LANDS SERVICES			PO BOX 878	BLACKTOWN	NSW	2148
367	120/5268//824057////	BOTANY	LA PEROUSE	RANDWICK	OTHER CROWN LAND	STATE LANDS SERVICES			PO BOX 878	BLACKTOWN	NSW	2148

NC97/8 ; Darug #3

DESCRIPTION													
REF	PARCEL IDENTIFIER	PARISH	LALC	LGA	TYPE	HOLDER/VESTEE/LESSEE/TRUSTEE			CONTACT ADDRESS DETAILS				
						ORG/SURNAME	GIVEN NAME	TITLE	ADDRESS1	TOWN	STATE	PC	
368	120/5269//824057////	BOTANY	LA PEROUSE	RANDWICK	OTHER CROWN LAND	STATE LANDS SERVICES				PO BOX 878	BLACKTOWN	NSW	2148
369	120/5270//824057////	BOTANY	LA PEROUSE	RANDWICK	OTHER CROWN LAND	STATE LANDS SERVICES				PO BOX 878	BLACKTOWN	NSW	2148
370	120/5271//824057////	BOTANY	LA PEROUSE	RANDWICK	OTHER CROWN LAND	STATE LANDS SERVICES				PO BOX 878	BLACKTOWN	NSW	2148
371	120/5272//824057////	BOTANY	LA PEROUSE	RANDWICK	OTHER CROWN LAND	STATE LANDS SERVICES				PO BOX 878	BLACKTOWN	NSW	2148
372	120/5273//824057////	BOTANY	LA PEROUSE	RANDWICK	OTHER CROWN LAND	STATE LANDS SERVICES				PO BOX 878	BLACKTOWN	NSW	2148
373	120/5274//824057////	BOTANY	LA PEROUSE	RANDWICK	OTHER CROWN LAND	STATE LANDS SERVICES				PO BOX 878	BLACKTOWN	NSW	2148
374	120/5275//824057////	BOTANY	LA PEROUSE	RANDWICK	OTHER CROWN LAND	STATE LANDS SERVICES				PO BOX 878	BLACKTOWN	NSW	2148
375	120/5276//824057////	BOTANY	LA PEROUSE	RANDWICK	OTHER CROWN LAND	STATE LANDS SERVICES				PO BOX 878	BLACKTOWN	NSW	2148
376	120/5277//824057////	BOTANY	LA PEROUSE	RANDWICK	OTHER CROWN LAND	STATE LANDS SERVICES				PO BOX 878	BLACKTOWN	NSW	2148
377	120/5278//824057////	BOTANY	LA PEROUSE	RANDWICK	OTHER CROWN LAND	STATE LANDS SERVICES				PO BOX 878	BLACKTOWN	NSW	2148
378	120/5279//824057////	BOTANY	LA PEROUSE	RANDWICK	OTHER CROWN LAND	STATE LANDS SERVICES				PO BOX 878	BLACKTOWN	NSW	2148
380	120/5280//824057////	BOTANY	LA PEROUSE	RANDWICK	OTHER CROWN LAND	STATE LANDS SERVICES				PO BOX 878	BLACKTOWN	NSW	2148
381	120/5281//824057////	BOTANY	LA PEROUSE	RANDWICK	OTHER CROWN LAND	STATE LANDS SERVICES				PO BOX 878	BLACKTOWN	NSW	2148
382	120/5282//824057////	BOTANY	LA PEROUSE	RANDWICK	OTHER CROWN LAND	STATE LANDS SERVICES				PO BOX 878	BLACKTOWN	NSW	2148
383	120/5283//824057////	BOTANY	LA PEROUSE	RANDWICK	OTHER CROWN LAND	STATE LANDS SERVICES				PO BOX 878	BLACKTOWN	NSW	2148
384	120/5284//824057////	BOTANY	LA PEROUSE	RANDWICK	OTHER CROWN LAND	STATE LANDS SERVICES				PO BOX 878	BLACKTOWN	NSW	2148
385	120/5285//824057////	BOTANY	LA PEROUSE	RANDWICK	OTHER CROWN LAND	STATE LANDS SERVICES				PO BOX 878	BLACKTOWN	NSW	2148
386	120/5286//824057////	BOTANY	LA PEROUSE	RANDWICK	OTHER CROWN LAND	STATE LANDS SERVICES				PO BOX 878	BLACKTOWN	NSW	2148
387	120/5287//824057////	BOTANY	LA PEROUSE	RANDWICK	OTHER CROWN LAND	STATE LANDS SERVICES				PO BOX 878	BLACKTOWN	NSW	2148
388	120/5288//824057////	BOTANY	LA PEROUSE	RANDWICK	OTHER CROWN LAND	STATE LANDS SERVICES				PO BOX 878	BLACKTOWN	NSW	2148
389	120/5289//824057////	BOTANY	LA PEROUSE	RANDWICK	OTHER CROWN LAND	STATE LANDS SERVICES				PO BOX 878	BLACKTOWN	NSW	2148
390	120/529//752056////	ST GEORGE	METROPOLITAN	ROCKDALE	OTHER CROWN LAND	STATE LANDS SERVICES				PO BOX 878	BLACKTOWN	NSW	2148
391	120/5295//824070////	BOTANY	LA PEROUSE	BOTANY BAY	OTHER CROWN LAND	STATE LANDS SERVICES				PO BOX 878	BLACKTOWN	NSW	2148
392	120/530//752056////	ST GEORGE	METROPOLITAN	KOGARAH	OTHER CROWN LAND	STATE LANDS SERVICES				PO BOX 878	BLACKTOWN	NSW	2148
393	120/533//752056////	ST GEORGE	METROPOLITAN	HURSTVILLE	OTHER CROWN LAND	STATE LANDS SERVICES				PO BOX 878	BLACKTOWN	NSW	2148
394	120/534//752056////	ST GEORGE	METROPOLITAN	HURSTVILLE	OTHER CROWN LAND	STATE LANDS SERVICES				PO BOX 878	BLACKTOWN	NSW	2148
395	120/535//752056////	ST GEORGE	METROPOLITAN	HURSTVILLE	OTHER CROWN LAND	STATE LANDS SERVICES				PO BOX 878	BLACKTOWN	NSW	2148

NC97/8 ; Darug #3

DESCRIPTION													
REF	PARCEL IDENTIFIER	PARISH	LALC	LGA	TYPE	HOLDER/VESTEE/LESSEE/TRUSTEE			CONTACT ADDRESS DETAILS				
						ORG/SURNAME	GIVEN NAME	TITLE	ADDRESS1	TOWN	STATE	PC	
396	120/541/751627/III	BLACKHEATH	DEERUBBIN	BLUE MOUNTAINS	OTHER CROWN LAND	STATE LANDS SERVICES				PO BOX 878	BLACKTOWN	NSW	2148
399	120/545/822284/III	JAMISON	DEERUBBIN	BLUE MOUNTAINS	OTHER CROWN LAND	STATE LANDS SERVICES				PO BOX 878	BLACKTOWN	NSW	2148
400	120/553/47342/III	BLACKHEATH	DEERUBBIN	BLUE MOUNTAINS	OTHER CROWN LAND	STATE LANDS SERVICES				PO BOX 878	BLACKTOWN	NSW	2148
401	120/56/752015/III	BOTANY	LA PEROUSE	RANDWICK	OTHER CROWN LAND	STATE LANDS SERVICES				PO BOX 878	BLACKTOWN	NSW	2148
402	120/57/752015/III	BOTANY	LA PEROUSE	RANDWICK	OTHER CROWN LAND	STATE LANDS SERVICES				PO BOX 878	BLACKTOWN	NSW	2148
403	120/575/752053/III	SOUTH COLAH	METROPOLITAN	HORNSBY	OTHER CROWN LAND	STATE LANDS SERVICES				PO BOX 878	BLACKTOWN	NSW	2148
404	120/58/752015/III	BOTANY	LA PEROUSE	RANDWICK	OTHER CROWN LAND	STATE LANDS SERVICES				PO BOX 878	BLACKTOWN	NSW	2148
405	120/59/752015/III	BOTANY	LA PEROUSE	RANDWICK	OTHER CROWN LAND	STATE LANDS SERVICES				PO BOX 878	BLACKTOWN	NSW	2148
406	120/594/752015/III	BOTANY	LA PEROUSE	RANDWICK	OTHER CROWN LAND	STATE LANDS SERVICES				PO BOX 878	BLACKTOWN	NSW	2148
407	120/596/752049/III	PETERSHAM	METROPOLITAN	MARRICKVILLE	OTHER CROWN LAND	STATE LANDS SERVICES				PO BOX 878	BLACKTOWN	NSW	2148
408	120/597/752049/III	PETERSHAM	METROPOLITAN	MARRICKVILLE	OTHER CROWN LAND	STATE LANDS SERVICES				PO BOX 878	BLACKTOWN	NSW	2148
409	120/598/752015/III	BOTANY	LA PEROUSE	RANDWICK	OTHER CROWN LAND	STATE LANDS SERVICES				PO BOX 878	BLACKTOWN	NSW	2148
410	120/6/2006/III	BLACKHEATH	DEERUBBIN	BLUE MOUNTAINS	OTHER CROWN LAND	STATE LANDS SERVICES				PO BOX 878	BLACKTOWN	NSW	2148
411	120/6/752039/III	MARROTA	DEERUBBIN	BAULKHAM HILLS	OTHER CROWN LAND	STATE LANDS SERVICES				PO BOX 878	BLACKTOWN	NSW	2148
412	120/6/9/758387/III	STRATHDON	DEERUBBIN	PENRITH	OTHER CROWN LAND	STATE LANDS SERVICES				PO BOX 878	BLACKTOWN	NSW	2148
413	120/60/752015/III	BOTANY	LA PEROUSE	RANDWICK	OTHER CROWN LAND	STATE LANDS SERVICES				PO BOX 878	BLACKTOWN	NSW	2148
414	120/601/39962/III	PETERSHAM	METROPOLITAN	LEICHHARDT	OTHER CROWN LAND	STATE LANDS SERVICES				PO BOX 878	BLACKTOWN	NSW	2148
415	120/61/752015/III	BOTANY	LA PEROUSE	RANDWICK	OTHER CROWN LAND	STATE LANDS SERVICES				PO BOX 878	BLACKTOWN	NSW	2148
416	120/610/752015/III	BOTANY	LA PEROUSE	RANDWICK	OTHER CROWN LAND	STATE LANDS SERVICES				PO BOX 878	BLACKTOWN	NSW	2148
417	120/62/752015/III	BOTANY	LA PEROUSE	RANDWICK	OTHER CROWN LAND	STATE LANDS SERVICES				PO BOX 878	BLACKTOWN	NSW	2148
418	120/64/751635/III	COOMASSIE	DEERUBBIN	BLUE MOUNTAINS	OTHER CROWN LAND	STATE LANDS SERVICES				PO BOX 878	BLACKTOWN	NSW	2148
419	120/642/728440/III	PETERSHAM	METROPOLITAN	CANTERBURY	OTHER CROWN LAND	STATE LANDS SERVICES				PO BOX 878	BLACKTOWN	NSW	2148
420	120/65/751635/III	COOMASSIE	DEERUBBIN	BLUE MOUNTAINS	OTHER CROWN LAND	STATE LANDS SERVICES				PO BOX 878	BLACKTOWN	NSW	2148
421	120/66/752021/III	CASTLEREAGH	DEERUBBIN	PENRITH	OTHER CROWN LAND	STATE LANDS SERVICES				PO BOX 878	BLACKTOWN	NSW	2148
422	120/7/2562/III	CONCORD	METROPOLITAN	DRUMMOYNE	OTHER CROWN LAND	STATE LANDS SERVICES				PO BOX 878	BLACKTOWN	NSW	2148
423	120/7/57637/III	CONCORD	METROPOLITAN	DRUMMOYNE	OTHER CROWN LAND	STATE LANDS SERVICES				PO BOX 878	BLACKTOWN	NSW	2148
424	120/7/9/758387/III	STRATHDON	DEERUBBIN	PENRITH	OTHER CROWN LAND	STATE LANDS SERVICES				PO BOX 878	BLACKTOWN	NSW	2148

NC97/8 ; Darug #3

DESCRIPTION													
REF	PARCEL IDENTIFIER	PARISH	LALC	LGA	TYPE	HOLDER/VESSEE/LESSEE/TRUSTEE			CONTACT ADDRESS DETAILS				
						ORG/SURNAME	GIVEN NAME	TITLE	ADDRESS1	TOWN	STATE	PC	
425	120/711//47216////	PETERSHAM	METROPOLITAN	LEICHHARDT	OTHER CROWN LAND	STATE LANDS SERVICES				PO BOX 878	BLACKTOWN	NSW	2148
426	120/712//47216////	PETERSHAM	METROPOLITAN	LEICHHARDT	OTHER CROWN LAND	STATE LANDS SERVICES				PO BOX 878	BLACKTOWN	NSW	2148
427	120/713//47216////	PETERSHAM	METROPOLITAN	LEICHHARDT	OTHER CROWN LAND	STATE LANDS SERVICES				PO BOX 878	BLACKTOWN	NSW	2148
428	120/714//47216////	PETERSHAM	METROPOLITAN	LEICHHARDT	OTHER CROWN LAND	STATE LANDS SERVICES				PO BOX 878	BLACKTOWN	NSW	2148
429	120/715//47216////	PETERSHAM	METROPOLITAN	LEICHHARDT	OTHER CROWN LAND	STATE LANDS SERVICES				PO BOX 878	BLACKTOWN	NSW	2148
430	120/716//47216////	PETERSHAM	METROPOLITAN	LEICHHARDT	OTHER CROWN LAND	STATE LANDS SERVICES				PO BOX 878	BLACKTOWN	NSW	2148
431	120/717//47216////	PETERSHAM	METROPOLITAN	LEICHHARDT	OTHER CROWN LAND	STATE LANDS SERVICES				PO BOX 878	BLACKTOWN	NSW	2148
432	120/719//47216////	PETERSHAM	METROPOLITAN	LEICHHARDT	OTHER CROWN LAND	STATE LANDS SERVICES				PO BOX 878	BLACKTOWN	NSW	2148
433	120/720//47216////	PETERSHAM	METROPOLITAN	LEICHHARDT	OTHER CROWN LAND	STATE LANDS SERVICES				PO BOX 878	BLACKTOWN	NSW	2148
434	120/721//47216////	PETERSHAM	METROPOLITAN	LEICHHARDT	OTHER CROWN LAND	STATE LANDS SERVICES				PO BOX 878	BLACKTOWN	NSW	2148
435	120/722//47216////	PETERSHAM	METROPOLITAN	LEICHHARDT	OTHER CROWN LAND	STATE LANDS SERVICES				PO BOX 878	BLACKTOWN	NSW	2148
436	120/723//752053////	SOUTH COLAH	METROPOLITAN	HORNSBY	OTHER CROWN LAND	STATE LANDS SERVICES				PO BOX 878	BLACKTOWN	NSW	2148
437	120/756//752035////	HUNTERS HILL	METROPOLITAN	RYDE	OTHER CROWN LAND	STATE LANDS SERVICES				PO BOX 878	BLACKTOWN	NSW	2148
438	120/79//751627////	BLACKHEATH	DEERUBBIN	BLUE MOUNTAINS	OTHER CROWN LAND	STATE LANDS SERVICES				PO BOX 878	BLACKTOWN	NSW	2148
439	120/8//57637////	CONCORD	METROPOLITAN	DRUMMOYNE	OTHER CROWN LAND	STATE LANDS SERVICES				PO BOX 878	BLACKTOWN	NSW	2148
440	120/8/9//758387////	STRATHDON	DEERUBBIN	PENRITH	OTHER CROWN LAND	STATE LANDS SERVICES				PO BOX 878	BLACKTOWN	NSW	2148
441	120/80//751627////	BLACKHEATH	DEERUBBIN	BLUE MOUNTAINS	OTHER CROWN LAND	STATE LANDS SERVICES				PO BOX 878	BLACKTOWN	NSW	2148
442	120/80//751656////	MEEHAN	DEERUBBIN	HAWKESBURY	OTHER CROWN LAND	STATE LANDS SERVICES				PO BOX 878	BLACKTOWN	NSW	2148
443	120/81//751627////	BLACKHEATH	DEERUBBIN	BLUE MOUNTAINS	OTHER CROWN LAND	STATE LANDS SERVICES				PO BOX 878	BLACKTOWN	NSW	2148
444	120/817//752028////	FIELD OF MARS	METROPOLITAN	HORNSBY	OTHER CROWN LAND	STATE LANDS SERVICES				PO BOX 878	BLACKTOWN	NSW	2148
445	120/818//752028////	FIELD OF MARS	METROPOLITAN	HORNSBY	OTHER CROWN LAND	STATE LANDS SERVICES				PO BOX 878	BLACKTOWN	NSW	2148
446	120/82//751627////	BLACKHEATH	DEERUBBIN	BLUE MOUNTAINS	OTHER CROWN LAND	STATE LANDS SERVICES				PO BOX 878	BLACKTOWN	NSW	2148
447	120/84//751627////	BLACKHEATH	DEERUBBIN	BLUE MOUNTAINS	OTHER CROWN LAND	STATE LANDS SERVICES				PO BOX 878	BLACKTOWN	NSW	2148
448	120/85//751627////	BLACKHEATH	DEERUBBIN	BLUE MOUNTAINS	OTHER CROWN LAND	STATE LANDS SERVICES				PO BOX 878	BLACKTOWN	NSW	2148
449	120/85//751660////	NEPEAN	DEERUBBIN	BLUE MOUNTAINS	OTHER CROWN LAND	STATE LANDS SERVICES				PO BOX 878	BLACKTOWN	NSW	2148
450	120/86//40224////	NEPEAN	DEERUBBIN	BLUE MOUNTAINS	OTHER CROWN LAND	STATE LANDS SERVICES				PO BOX 878	BLACKTOWN	NSW	2148
451	120/86//751627////	BLACKHEATH	DEERUBBIN	BLUE MOUNTAINS	OTHER CROWN LAND	STATE LANDS SERVICES				PO BOX 878	BLACKTOWN	NSW	2148

DESCRIPTION													
REF	PARCEL IDENTIFIER	PARISH	LALC	LGA	TYPE	HOLDER/VESTEE/LESSEE/TRUSTEE			CONTACT ADDRESS DETAILS				
						ORG/SURNAME	GIVEN NAME	TITLE	ADDRESS1	TOWN	STATE	PC	
452	120/87//751627////	BLACKHEATH	DEERUBBIN	BLUE MOUNTAINS	OTHER CROWN LAND	STATE LANDS SERVICES				PO BOX 878	BLACKTOWN	NSW	2148
453	120/88//40226////	NEPEAN	DEERUBBIN	BLUE MOUNTAINS	OTHER CROWN LAND	STATE LANDS SERVICES				PO BOX 878	BLACKTOWN	NSW	2148
454	120/88//751627////	BLACKHEATH	DEERUBBIN	BLUE MOUNTAINS	OTHER CROWN LAND	STATE LANDS SERVICES				PO BOX 878	BLACKTOWN	NSW	2148
455	120/89//751627////	BLACKHEATH	DEERUBBIN	BLUE MOUNTAINS	OTHER CROWN LAND	STATE LANDS SERVICES				PO BOX 878	BLACKTOWN	NSW	2148
456	120/9//57112////	CONCORD	METROPOLITAN	DRUMMOYNE	OTHER CROWN LAND	STATE LANDS SERVICES				PO BOX 878	BLACKTOWN	NSW	2148
457	120/9/9/758387////	STRATHDON	DEERUBBIN	PENRITH	OTHER CROWN LAND	STATE LANDS SERVICES				PO BOX 878	BLACKTOWN	NSW	2148
458	120/90//751627////	BLACKHEATH	DEERUBBIN	BLUE MOUNTAINS	OTHER CROWN LAND	STATE LANDS SERVICES				PO BOX 878	BLACKTOWN	NSW	2148
459	120/91//751627////	BLACKHEATH	DEERUBBIN	BLUE MOUNTAINS	OTHER CROWN LAND	STATE LANDS SERVICES				PO BOX 878	BLACKTOWN	NSW	2148
460	120/94//751635////	COOMASSIE	DEERUBBIN	BLUE MOUNTAINS	OTHER CROWN LAND	STATE LANDS SERVICES				PO BOX 878	BLACKTOWN	NSW	2148
461	120/962//752053////	SOUTH COLAH	METROPOLITAN	HORNSBY	OTHER CROWN LAND	STATE LANDS SERVICES				PO BOX 878	BLACKTOWN	NSW	2148
462	120/97//751627////	BLACKHEATH	DEERUBBIN	BLUE MOUNTAINS	OTHER CROWN LAND	STATE LANDS SERVICES				PO BOX 878	BLACKTOWN	NSW	2148
463	120/98//751627////	BLACKHEATH	DEERUBBIN	BLUE MOUNTAINS	OTHER CROWN LAND	STATE LANDS SERVICES				PO BOX 878	BLACKTOWN	NSW	2148
464	120/?//55267////	CONCORD	METROPOLITAN	DRUMMOYNE	OTHER CROWN LAND	STATE LANDS SERVICES				PO BOX 878	BLACKTOWN	NSW	2148
465	120/A/368101////	CONCORD	METROPOLITAN	DRUMMOYNE	OTHER CROWN LAND	STATE LANDS SERVICES				PO BOX 878	BLACKTOWN	NSW	2148
466	120/PT6//57637////	CONCORD	METROPOLITAN	DRUMMOYNE	OTHER CROWN LAND	STATE LANDS SERVICES				PO BOX 878	BLACKTOWN	NSW	2148
467	130/////	BOTANY	LA PEROUSE	RANDWICK	STATUS UNKNOWN	STATE LANDS SERVICES				PO BOX 878	BLACKTOWN	NSW	2148
467	130/////	CONCORD	METROPOLITAN	CONCORD	STATUS UNKNOWN	STATE LANDS SERVICES				PO BOX 878	BLACKTOWN	NSW	2148
467	130/////	FIELD OF MARS	METROPOLITAN	PARRAMATTA	STATUS UNKNOWN	STATE LANDS SERVICES				PO BOX 878	BLACKTOWN	NSW	2148
467	130/////	HAM COMMON	DEERUBBIN	HAWKESBURY	STATUS UNKNOWN	STATE LANDS SERVICES				PO BOX 878	BLACKTOWN	NSW	2148
467	130/////	HUNTERS HILL	METROPOLITAN	RYDE	STATUS UNKNOWN	STATE LANDS SERVICES				PO BOX 878	BLACKTOWN	NSW	2148
467	130/////	HUNTERS HILL	METROPOLITAN	UNINCORPORATED	STATUS UNKNOWN	STATE LANDS SERVICES				PO BOX 878	BLACKTOWN	NSW	2148
467	130/////	ST GEORGE	METROPOLITAN	KOGARAH	STATUS UNKNOWN	STATE LANDS SERVICES				PO BOX 878	BLACKTOWN	NSW	2148
467	130/////	ST JOHN	DEERUBBIN	PARRAMATTA	STATUS UNKNOWN	STATE LANDS SERVICES				PO BOX 878	BLACKTOWN	NSW	2148
467	130/////	ST MATTHEW	DEERUBBIN	HAWKESBURY	STATUS UNKNOWN	STATE LANDS SERVICES				PO BOX 878	BLACKTOWN	NSW	2148
467	130/////	WILBERFORCE	DEERUBBIN	HAWKESBURY	STATUS UNKNOWN	STATE LANDS SERVICES				PO BOX 878	BLACKTOWN	NSW	2148
468	130/////	NOT_DEFINED	NOT_DEFINED	WAVERLEY	STATUS UNKNOWN	STATE LANDS SERVICES				PO BOX 878	BLACKTOWN	NSW	2148
469	130/1//119108////	ALEXANDRIA	LA PEROUSE	RANDWICK	STATUS UNKNOWN	STATE LANDS SERVICES				PO BOX 878	BLACKTOWN	NSW	2148

NC97/8 ; Darug #3

DESCRIPTION												
REF	PARCEL IDENTIFIER	PARISH	LALC	LGA	TYPE	HOLDER/VESTEE/LESSEE/TRUSTEE			CONTACT ADDRESS DETAILS			
						ORG/SURNAME	GIVEN NAME	TITLE	ADDRESS1	TOWN	STATE	PC
470	130/2//119108////	ALEXANDRIA	LA PEROUSE	RANDWICK	STATUS UNKNOWN	STATE LANDS SERVICES			PO BOX 878	BLACKTOWN	NSW	2148
471	130/3//119108////	ALEXANDRIA	LA PEROUSE	RANDWICK	STATUS UNKNOWN	STATE LANDS SERVICES			PO BOX 878	BLACKTOWN	NSW	2148
472	130/7A/10/11608////	BANKSTOWN	GANDANGARA	BANKSTOWN	STATUS UNKNOWN	STATE LANDS SERVICES			PO BOX 878	BLACKTOWN	NSW	2148
474	120/12/9/758387////	STRATHDON	DEERUBBIN	PENRITH	OTHER CROWN LAND	STATE LANDS SERVICES			PO BOX 878	BLACKTOWN	NSW	2148
475	120/13/9/758387////	STRATHDON	DEERUBBIN	PENRITH	OTHER CROWN LAND	STATE LANDS SERVICES			PO BOX 878	BLACKTOWN	NSW	2148
476	120/14/9/758387////	STRATHDON	DEERUBBIN	PENRITH	OTHER CROTHER CROWN LAND	STATE LANDS SERVICES			PO BOX 878	BLACKTOWN	NSW	2148
477	120/15/9/758387////	STRATHDON	DEERUBBIN	PENRITH	OTHER CROWN LAND	STATE LANDS SERVICES			PO BOX 878	BLACKTOWN	NSW	2148
478	120/16/9/758387////	STRATHDON	DEERUBBIN	PENRITH	OTHER CROWN LAND	STATE LANDS SERVICES			PO BOX 878	BLACKTOWN	NSW	2148
479	120/17/9/758387////	STRATHDON	DEERUBBIN	PENRITH	OTHER CROWN LAND	STATE LANDS SERVICES			PO BOX 878	BLACKTOWN	NSW	2148
480	120/18/9/758387////	STRATHDON	DEERUBBIN	PENRITH	OTHER CROWN LAND	STATE LANDS SERVICES			PO BOX 878	BLACKTOWN	NSW	2148
481	120/013/35//251284////	BOTANY	LA PEROUSE	RANDWICK	OTHER CROWN LAND	STATE LANDS SERVICES			PO BOX 878	BLACKTOWN	NSW	2148
482	120/8//251284////	BOTANY	LA PEROUSE	RANDWICK	OTHER CROWN LAND	STATE LANDS SERVICES			PO BOX 878	BLACKTOWN	NSW	2148

PLAN OF CROWN LAND SHOWING FORMER ARTIFICIAL ID

DP 1067986



120/7016/751656/111

Shire/City HAWKESBURY

Town/Locality LOWER PORTLAND

Parish MEEHAN

County COOK (30)

Not to Scale

Registered 4.5.2004

Title System CROWN LAND

Purpose DEPARTMENTAL

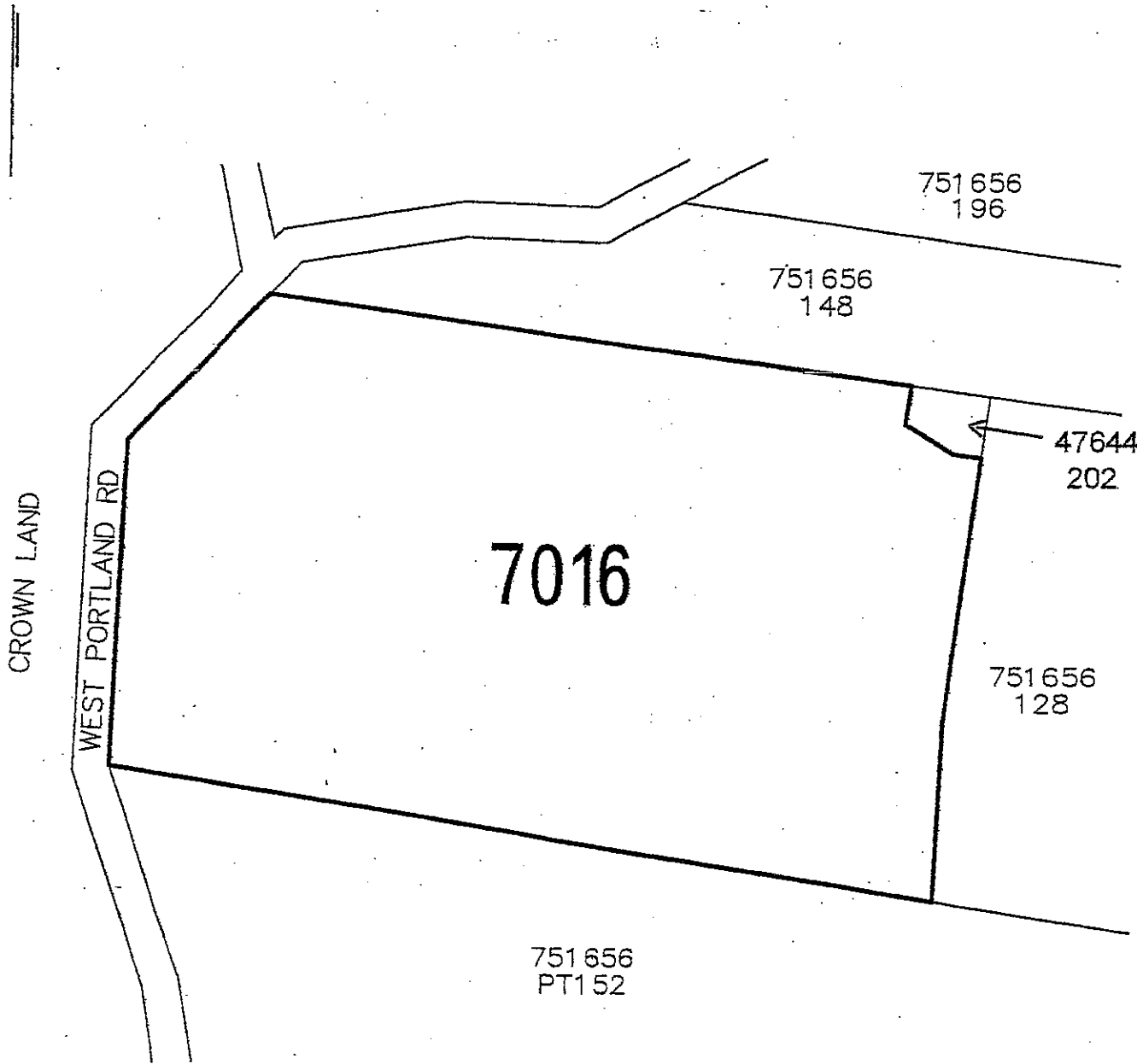
Reference Map PARISH

DCDB Partition LOWP25

Last Plan -

DIAGRAM FOR IDENTIFICATION PURPOSES ONLY - NOT TO BE USED FOR FOLIO CREATION
THIS IS NOT A SUBDIVISION OF THE CROWN ESTATE. STATUS MAY NEED TO BE VERIFIED.
NOT INVESTIGATED IN LAND AND PROPERTY INFORMATION AS TO LOCATION OF BOUNDARIES

GN



28.05.2004



DP47644 ADDED AS ADJOINING INFORMATION IN LPI NSW VIDE 2004/951

Our Ref: 1731B/PJ/PJ/AR/261010

26 October 2010

Department of Environmental Climate Change and Water NSW
Planning and Aboriginal Heritage Section
PO Box 668
PARRAMATTA NSW 2124

Re: Aboriginal Party Consultation in Relation to an Aboriginal Cultural Heritage and Archaeological Assessment as part of an Environmental Assessment for the Expansion of Sand Extraction at the Tinda Park Quarry north of Windsor

Hy-Tec Industries Pty Ltd T/A Hy-Tec Concrete & Aggregates (Hy-Tec) is currently undertaking an Environmental Assessment for the expansion of its approved sand quarry at Tinda Park on the Putty Road, approximately 70 kilometres north of Windsor, NSW. Currently Hy-Tec has approval for operations within a 22 hectare area and is seeking to expand its operations in an adjoining area of approximately 46 hectares (refer to **Figure 1**). The Tinda Park Quarry property is adjoined on two sides by Yengo National Park and is to the east of Wollemi National Park.

The purpose of this notification is for Umwelt (Australia) Pty Ltd (Umwelt), on behalf of Hy-Tec, to ascertain if DECCW is aware of any Aboriginal parties that may have cultural knowledge relevant to determining the significance of Aboriginal sites/objects within the proposed additional sand extraction area and the adjoining Yengo National Park and Wollemi National Park areas that may wish to be consulted in relation to the project. In order to facilitate the consultation process, Umwelt would be grateful if the DECCW could advise, in writing, of any Aboriginal knowledge holders that may wish to be consulted by no later than **Tuesday 12 November 2010**.

In compliance with the Department of Environment Climate Change and Water *Aboriginal Cultural Heritage Consultation Requirements for Proponents* (2010) the contact details for should this be Hy-Tec Contracting are as follows:

Darryl Thiedeke
Hy-Tec Industries T/A Hy-Tec Concrete & Aggregates
PO Box 6770
Silverwater NSW 1811
email to: darryl.thiedeke@hy-tec.com.au

Should you have any queries or wish to discuss this notification letter, please do not hesitate to call the undersigned or Amanda Reynolds on 02 4950 5322.

Yours faithfully

Peter Jamieson
Director

Our Ref: 1731B/PJ/PJ/AR/261010

26 October 2010

Hawkesbury City Council
PO Box 146
WINDSOR NSW 2756

Re: Aboriginal Party Consultation in Relation to an Aboriginal Cultural Heritage and Archaeological Assessment as part of an Environmental Assessment for the Expansion of Sand Extraction at the Tinda Park Quarry north of Windsor

Hy-Tec Industries Pty Ltd T/A Hy-Tec Concrete & Aggregates (Hy-Tec) is currently undertaking an Environmental Assessment for the expansion of its approved sand quarry at Tinda Park on the Putty Road, approximately 70 kilometres north of Windsor, NSW. Currently Hy-Tec has approval for operations within a 22 hectare area and is seeking to expand its operations in an adjoining area of approximately 46 hectares (refer to **Figure 1**). The Tinda Park Quarry property is adjoined on two sides by Yengo National Park and is to the east of Wollemi National Park.

The purpose of this notification is for Umwelt (Australia) Pty Ltd (Umwelt), on behalf of Hy-Tec, to ascertain if Hawkesbury City Council is aware of any Aboriginal parties that may have cultural knowledge relevant to determining the significance of Aboriginal sites/objects within the proposed additional sand extraction area and the adjoining Yengo National Park and Wollemi National Park areas that may wish to be consulted in relation to the project. In order to facilitate the consultation process, Umwelt would be grateful if the Hawkesbury City Council could advise, in writing, of any Aboriginal knowledge holders that may wish to be consulted by no later than **Tuesday 12 November 2010**.

In compliance with the Department of Environment Climate Change and Water *Aboriginal Cultural Heritage Consultation Requirements for Proponents* (2010) the contact details for should this be Hy-Tec Contracting are as follows:

Darryl Thiedeke
Hy-Tec Industries T/A Hy-Tec Concrete & Aggregates
PO Box 6770
Silverwater NSW 1811
email to: darryl.thiedeke@hy-tec.com.au

Should you have any queries or wish to discuss this notification letter, please do not hesitate to call the undersigned or Amanda Reynolds on 02 4950 5322.

Yours faithfully

Peter Jamieson
Director

Our Ref: 1731B/PJ/PJ/AR/261010

26 October 2010

Hawkesbury-Nepean CMA
Head Office
159 Auburn Street
GOULBURN NSW 2580

Re: Aboriginal Party Consultation in Relation to an Aboriginal Cultural Heritage and Archaeological Assessment as part of an Environmental Assessment for the Expansion of Sand Extraction at the Tinda Park Quarry north of Windsor

Hy-Tec Industries Pty Ltd T/A Hy-Tec Concrete & Aggregates (Hy-Tec) is currently undertaking an Environmental Assessment for the expansion of its approved sand quarry at Tinda Park on the Putty Road, approximately 70 kilometres north of Windsor, NSW. Currently Hy-Tec has approval for operations within a 22 hectare area and is seeking to expand its operations in an adjoining area of approximately 46 hectares (refer to **Figure 1**). The Tinda Park Quarry property is adjoined on two sides by Yengo National Park and is to the east of Wollemi National Park.

The purpose of this notification is for Umwelt (Australia) Pty Ltd (Umwelt), on behalf of Hy-Tec, to ascertain if Hawkesbury-Nepean CMA is aware of any Aboriginal parties that may have cultural knowledge relevant to determining the significance of Aboriginal sites/objects within the proposed additional sand extraction area and the adjoining Yengo National Park and Wollemi National Park areas that may wish to be consulted in relation to the project. In order to facilitate the consultation process, Umwelt would be grateful if the Hawkesbury-Nepean CMA could advise, in writing, of any Aboriginal knowledge holders that may wish to be consulted by no later than **Tuesday 12 November 2010**.

In compliance with the Department of Environment Climate Change and Water *Aboriginal Cultural Heritage Consultation Requirements for Proponents* (2010) the contact details for should this be Hy-Tec Contracting are as follows:

Darryl Thiedeke
Hy-Tec Industries T/A Hy-Tec Concrete & Aggregates
PO Box 6770
Silverwater NSW 1811
email to: darryl.thiedeke@hy-tec.com.au

Should you have any queries or wish to discuss this notification letter, please do not hesitate to call the undersigned or Amanda Reynolds on 02 4950 5322.

Yours faithfully

Peter Jamieson
Director

Our Ref: 1731B/PJ/PJ/AR/261010

26 October 2010

Metropolitan Local Aboriginal Land Council
PO Box 1103
STRAWBERRY HILLS NSW 2012

Re: Aboriginal Party Consultation in Relation to an Aboriginal Cultural Heritage and Archaeological Assessment as part of an Environmental Assessment for the Expansion of Sand Extraction at the Tinda Park Quarry north of Windsor

Hy-Tec Industries Pty Ltd T/A Hy-Tec Concrete & Aggregates (Hy-Tec) is currently undertaking an Environmental Assessment for the expansion of its approved sand quarry at Tinda Park on the Putty Road, approximately 70 kilometres north of Windsor, NSW. Currently Hy-Tec has approval for operations within a 22 hectare area and is seeking to expand its operations in an adjoining area of approximately 46 hectares (refer to **Figure 1**). The Tinda Park Quarry property is adjoined on two sides by Yengo National Park and is to the east of Wollemi National Park.

The purpose of this notification is for Umwelt (Australia) Pty Ltd (Umwelt), on behalf of Hy-Tec, to ascertain if Metropolitan Local Aboriginal Land Council is aware of any Aboriginal parties that may have cultural knowledge relevant to determining the significance of Aboriginal sites/objects within the proposed additional sand extraction area and the adjoining Yengo National Park and Wollemi National Park areas that may wish to be consulted in relation to the project. In order to facilitate the consultation process, Umwelt would be grateful if the Metropolitan Local Aboriginal Land Council could advise, in writing, of any Aboriginal knowledge holders that may wish to be consulted by no later than **Tuesday 12 November 2010**.

In compliance with the Department of Environment Climate Change and Water *Aboriginal Cultural Heritage Consultation Requirements for Proponents* (2010) the contact details for should this be Hy-Tec Contracting are as follows:

Darryl Thiedeke
Hy-Tec Industries T/A Hy-Tec Concrete & Aggregates
PO Box 6770
Silverwater NSW 1811
email to: darryl.thiedeke@hy-tec.com.au

Should you have any queries or wish to discuss this notification letter, please do not hesitate to call the undersigned or Amanda Reynolds on 02 4950 5322.

Yours faithfully

Peter Jamieson
Director

Our Ref: 1731B/PJ/PJ/AR/261010

26 October 2010

New South Wales and Australian Capital Territory Registry
GPO Box 9973
SYDNEY NSW 2001

Re: Aboriginal Party Consultation in Relation to an Aboriginal Cultural Heritage and Archaeological Assessment as part of an Environmental Assessment for the Expansion of Sand Extraction at the Tinda Park Quarry north of Windsor

Hy-Tec Industries Pty Ltd T/A Hy-Tec Concrete & Aggregates (Hy-Tec) is currently undertaking an Environmental Assessment for the expansion of its approved sand quarry at Tinda Park on the Putty Road, approximately 70 kilometres north of Windsor, NSW. Currently Hy-Tec has approval for operations within a 22 hectare area and is seeking to expand its operations in an adjoining area of approximately 46 hectares (refer to **Figure 1**). The Tinda Park Quarry property is adjoined on two sides by Yengo National Park and is to the east of Wollemi National Park.

The purpose of this notification is for Umwelt (Australia) Pty Ltd (Umwelt), on behalf of Hy-Tec, to ascertain if New South Wales and Australian Capital Territory Registry is aware of any Aboriginal parties that may have cultural knowledge relevant to determining the significance of Aboriginal sites/objects within the proposed additional sand extraction area and the adjoining Yengo National Park and Wollemi National Park areas that may wish to be consulted in relation to the project. In order to facilitate the consultation process, Umwelt would be grateful if the New South Wales and Australian Capital Territory Registry could advise, in writing, of any Aboriginal knowledge holders that may wish to be consulted by no later than **Tuesday 12 November 2010**.

In compliance with the Department of Environment Climate Change and Water *Aboriginal Cultural Heritage Consultation Requirements for Proponents* (2010) the contact details for should this be Hy-Tec Contracting are as follows:

Darryl Thiedeke
Hy-Tec Industries T/A Hy-Tec Concrete & Aggregates
PO Box 6770
Silverwater NSW 1811
email to: darryl.thiedeke@hy-tec.com.au

Should you have any queries or wish to discuss this notification letter, please do not hesitate to call the undersigned or Amanda Reynolds on 02 4950 5322.

Yours faithfully

Peter Jamieson
Director

Our Ref: 1731B/PJ/PJ/AR/261010

26 October 2010

Native Title Services Corp (NTSCORP Ltd)
Head Office Redfern
PO Box 2105
STRAWBERRY HILLS NSW 2012

Re: Aboriginal Party Consultation in Relation to an Aboriginal Cultural Heritage and Archaeological Assessment as part of an Environmental Assessment for the Expansion of Sand Extraction at the Tinda Park Quarry north of Windsor

Hy-Tec Industries Pty Ltd T/A Hy-Tec Concrete & Aggregates (Hy-Tec) is currently undertaking an Environmental Assessment for the expansion of its approved sand quarry at Tinda Park on the Putty Road, approximately 70 kilometres north of Windsor, NSW. Currently Hy-Tec has approval for operations within a 22 hectare area and is seeking to expand its operations in an adjoining area of approximately 46 hectares (refer to **Figure 1**). The Tinda Park Quarry property is adjoined on two sides by Yengo National Park and is to the east of Wollemi National Park.

The purpose of this notification is for Umwelt (Australia) Pty Ltd (Umwelt), on behalf of Hy-Tec, to ascertain if Native Title Services Corp (NTSCORP Ltd) is aware of any Aboriginal parties that may have cultural knowledge relevant to determining the significance of Aboriginal sites/objects within the proposed additional sand extraction area and the adjoining Yengo National Park and Wollemi National Park areas that may wish to be consulted in relation to the project. In order to facilitate the consultation process, Umwelt would be grateful if the Native Title Services Corp (NTSCORP Ltd) could advise, in writing, of any Aboriginal knowledge holders that may wish to be consulted by no later than **Tuesday 12 November 2010**.

In compliance with the Department of Environment Climate Change and Water *Aboriginal Cultural Heritage Consultation Requirements for Proponents* (2010) the contact details for should this be Hy-Tec Contracting are as follows:

Darryl Thiedeke
Hy-Tec Industries T/A Hy-Tec Concrete & Aggregates
PO Box 6770
Silverwater NSW 1811
email to: darryl.thiedeke@hy-tec.com.au

Should you have any queries or wish to discuss this notification letter, please do not hesitate to call the undersigned or Amanda Reynolds on 02 4950 5322.

Yours faithfully

Peter Jamieson
Director

Our Ref: 1731B/PJ/PJ/AR/261010

26 October 2010

Office of the Registrar
PO Box 112
GLEBE NSW 2037

Re: Aboriginal Party Consultation in Relation to an Aboriginal Cultural Heritage and Archaeological Assessment as part of an Environmental Assessment for the Expansion of Sand Extraction at the Tinda Park Quarry north of Windsor

Hy-Tec Industries Pty Ltd T/A Hy-Tec Concrete & Aggregates (Hy-Tec) is currently undertaking an Environmental Assessment for the expansion of its approved sand quarry at Tinda Park on the Putty Road, approximately 70 kilometres north of Windsor, NSW. Currently Hy-Tec has approval for operations within a 22 hectare area and is seeking to expand its operations in an adjoining area of approximately 46 hectares (refer to **Figure 1**). The Tinda Park Quarry property is adjoined on two sides by Yengo National Park and is to the east of Wollemi National Park.

The purpose of this notification is for Umwelt (Australia) Pty Ltd (Umwelt), on behalf of Hy-Tec, to ascertain if Office of the Registrar is aware of any Aboriginal parties that may have cultural knowledge relevant to determining the significance of Aboriginal sites/objects within the proposed additional sand extraction area and the adjoining Yengo National Park and Wollemi National Park areas that may wish to be consulted in relation to the project. In order to facilitate the consultation process, Umwelt would be grateful if the Office of the Registrar could advise, in writing, of any Aboriginal knowledge holders that may wish to be consulted by no later than **Tuesday 12 November 2010**.

In compliance with the Department of Environment Climate Change and Water *Aboriginal Cultural Heritage Consultation Requirements for Proponents* (2010) the contact details for should this be Hy-Tec Contracting are as follows:

Darryl Thiedeke
Hy-Tec Industries T/A Hy-Tec Concrete & Aggregates
PO Box 6770
Silverwater NSW 1811
email to: darryl.thiedeke@hy-tec.com.au

Should you have any queries or wish to discuss this notification letter, please do not hesitate to call the undersigned or Amanda Reynolds on 02 4950 5322.

Yours faithfully

Peter Jamieson
Director

Hy-Tec Concrete & Quarries

Hy-Tec Concrete & Quarries (Hy-Tec) is currently undertaking an Environmental Assessment for the expansion of its approved sand quarry at Tinda Park, on the Putty Road, approximately 70 kilometres north of Windsor, NSW.

In recognition that community consultation with Aboriginal people will assist in the preparation of the assessment, Hy-Tec would like to invite Aboriginal stakeholder groups/ individuals that have an interest in participating in the consultation process for this project to register their interest in writing to:

Darryl Thiedeke, Hy-Tec PO Box 6770
Silverwater NSW 1811 or email to:
darryl.thiedeke@hy-tec.com.au
Registration by 17 November 2010.



Hawkesbury-Nepean
Catchment Management Authority

Mr Peter Jamieson
Director
Umwelt Environmental Consultants
PO Box 838
TORONTO NSW 2283

Your Reference: 1731B/PJAR/261010
Our Reference: A 462391
Contact: John Lennis

28 October 2010

Dear Peter

Re: Aboriginal Party Consultation in Relation to an Aboriginal Heritage and Archaeological Assessment as part of an Environmental Assessment for the Expansion of Sand Extraction at the Tinda Park Quarry north of Windsor

I am writing in response to your letter dated 26 October 2010 letter regarding the proposed project by Hy-Tec Industries Pty Ltd for the proposed expansion of their approved sand quarry at Tinda Park on the Putty Road and your work in preparing an Environmental Assessment.


I have referred your request for information of any Aboriginal parties that may have cultural knowledge for this area to staff in our Penrith Office and would invite you to contact him to discuss your needs and interests in more detail.

The contact details for our nominated officer are:-

Mr John Lennis
Catchment Officer (Aboriginal Communities)
Hawkesbury-Nepean Catchment Management Authority
NSW Government Offices
Level 4, 2-6 Station Street
PO Box 4515
Penrith Westfields NSW 2750

Mr Lennis may be contacted by telephone on (02) 4725 3046 or by e-mail on john.lennis@cma.nsw.gov.au

Yours sincerely



Steve Nichols
Business Manager



National
Native Title
Tribunal



3 November 2010

Peter Jamieson
Director
Umwelt (Australia) Pty Ltd
2/20 The Boulevarde
PO Box 838
Toronto NSW 2283

**New South Wales and
Australian Capital Territory
Registry**

Level 25, 25 Bligh Street
Sydney NSW 2000
GPO Box 9973
Sydney NSW 2000
Telephone (02) 9235 6300
Facsimile (02) 9233 5613

Our Reference: 3861/10sd

Your Reference: 1731B/PJ/PJ/AR/261010

Dear Mr Jamieson,

Native Title Search Results of Hawkesbury City Council Local Government Area

Thank you for your letter of 26 October.

My search on 3 November found:

Register Type	NNTT Reference Numbers
National Native Title Register	NC96/6
Register of Native Title Claims	NC97/8
Unregistered Claimant applications	Nil.
Register of Indigenous Land Use Agreements	Nil.

I have included the appropriate extract from the Register of Native Title Claims, the National Native Title Register and a NNTT Registers fact sheet to help you understand the search result.

Please note that there may be a delay between a native title determination application being lodged in the Federal Court and its transfer to the Tribunal. As a result, some native title determination applications recently filed in the Federal Court may not appear on the Tribunal's databases.

We will invoice you for \$21.45.

If you need more information please call me on 1800 640 501.

Yours sincerely

A handwritten signature in black ink, appearing to be 'Sam Dutton', with a long horizontal flourish extending to the right.

Sam Dutton

Receptionist/Executive Assistant

Telephone (02) 9235 6300

Facsimile (02) 9235 5613

Email Sam.Dutton@nntt.gov.au

Encl



NATIONAL NATIVE TITLE TRIBUNAL

Application Information and Extract from the Register of Native Title Claims

Application Information

Application numbers: Federal Court number: NSD6061/98
NNTT number: NC97/8

Application name: Darug Tribal Aboriginal Corporation

Registration history: Registered from 12/05/1997 to 29/09/1999.
Registered from 13/12/2000.

NNTT map attached.

Register Extract (pursuant to s.186 of the *Native Title Act 1993*)

Application lodged with: National Native Title Tribunal

Date application lodged: 12/05/1997

Date claim entered on Register: 13/12/2000

Applicants: Angela Martin, Colin Rex Gale, Gordon William Morton

Address for service: Eddy Neumann
Eddy Neumann Lawyers
Level 1
255 Castlereagh Street
SYDNEY NSW 2000
Phone: (02) 9264 9933
Fax: (02) 9264 9966

Additional Information:

Not Applicable

Area covered by the claim:

Information identifying the boundaries of:

- a) the area covered by the application; and
- b) any areas within those boundaries that are not covered by the application.

(a) 18 x AO size colour maps (1 x locality & 17 x enlargements), 1 x A3 locality map and a 21 page tenure/parcel identifier produced by the Surveyor General's Department have been filed with the National Native Title Tribunal. The 21 page tenure/parcel identifier is "Attachment C".

(b) Subject to clauses (d) and (e) the area covered by the application excludes any land or waters covered by:

- (i) a schedule interest;
- (ii) a freehold estate;
- (iii) a commercial lease that is neither an agricultural lease nor a pastoral lease;
- (iv) an exclusive agricultural lease or an exclusive pastoral lease;
- (v) a residential lease;
- (vi) a community purpose lease;
- (vii) a lease dissected from a mining lease as referred to in s23B(2)(vii);
- (viii) any lease (other than a mining lease) that confers a right of exclusive use over particular land or waters;

which was validly vested or granted on or before 23 December 1996.

(c) subject to clauses (d) and (e) the area covered by the application excludes any area covered by the valid construction or establishment of any public work, where the construction or establishment of the public work commenced on or before 23 December 1996.

(d) Where the act specified in (b) and (c) falls within the provision of

- (i) s23B(9) - Exclusion of acts benefiting Aboriginal peoples or Torres Strait Islanders;
 - (ii) s23B(9A) - Establishment of a national or state park;
 - (iii) s23B(9B) - Acts where legislation provides for non-extinguishment;
 - (iv) s23B(9C) - Exclusion of Crown to Crown grants; and
 - (v) s23B(10) - Exclusion by regulation,
- the area covered by the act is not excluded from this application.

(e) Where an act referred to in clauses 2 and 3 covers land or waters referred to in:

- s47 - Pastoral leases held by native title claimants;
 - s47A - Reserves etc covered by claimant applications; and
 - s47B - Vacant crown land covered by claimant applications,
- the area covered by the act is not excluded from the application.

(f) Where an area is covered by a previous non-exclusive possession act (s 23F) the native title claim group does not claim the native title rights and interests set out in clause 1 of Attachment E to the exclusion of all others.

(g) The area covered by the application excludes land where native title has been extinguished at common law.

Persons claiming to hold native title:

The native title claim group comprises all the members of the Darug Tribal Aboriginal Corporation and their descendants

Registered native title rights and interests:

The following Native Title Rights & Interests were entered on the Register on 13/12/2000:

1. Subject to paragraphs 2 - 5 below the applicants claim the full and free enjoyment of the following native title rights in relation to area subject to application.

- (a) a right to possess, occupy, use and enjoy the claimed area
- (b) a right to make decisions about the use and enjoyment of the claimed area
- (c) a right of access to the claimed area
- (d) a right to control the access of others to the claimed area
- (e) a right to use and enjoy the resources of the claimed area
- (f) a right to control the use and enjoyment of others or resources of the claimed area
- (g) a right to trade in resources of the claimed area
- (h) (right not registered)
- (i) a right to maintain and protect places of importance under traditional laws, customs and practices in the claimed area
- (j) (right not registered)

2. With respect to those parts of the area the subject of the application which are, or have been the subject of a previous non-exclusive possession act within the meaning of s23F of the NTA, the applicants claim the native title rights and interests set out in 1 above subject to the rights and interests created in the "non exclusive possession act" which are not inconsistent with the rights and interests claimed and, in the case of rights granted which are inconsistent with the rights and interests claimed, subject to any suspension of the native title rights and interests which those inconsistent rights and interests cause.

3. With respect to those parts of the area the subject of the application which are, or have been, the subject of

- (a) a Category B intermediate period act within the meaning of s232C;
 - (b) a Category C intermediate period act within the meaning of s232D; or
 - (c) a Category D intermediate period act within the meaning of s232E;
- the applicants claim the native title rights and interests set out in 1 above subject to the rights and interests created in the "non exclusive possession act" which are not inconsistent with the rights and interests claimed and, in the case of rights granted which are inconsistent with the rights and interests claimed, subject to any suspension of the native title rights and interests which those inconsistent rights and interests cause.

4. With respect to those parts of the area the subject of the application which are, or have been the subject of

- (a) a Category B past act within the meaning of s230;
 - (b) a Category C past act within the meaning of s231; or
 - (c) a Category D past act within the meaning of s232;
- the applicants claim the native title rights and interests set out in 1 above subject to the rights and interests created in the "non exclusive possession act" which are not inconsistent with the rights and

interests claimed and, in the case of the rights granted which are inconsistent with the rights and interests claimed, subject to any suspension of native title rights and interests which those inconsistent rights and interests cause.

5. The native title rights and interests identified above do not extend to ownership of any minerals, petroleum or gas which are wholly owned by the Crown.

6. The native title rights and interests identified above do not include a claim for exclusive occupation and use of off shore areas as defined by s253.

Register attachments:

1. Tenure/Parcel Identifier (Available for inspection at the Sydney Registry of the Tribunal), Attachment C of the Application, 21 pages - A4, Attached 12/05/1997.

Note: The Register may, in accordance with s.188 of the Native Title Act 1993, contain confidential information that will not appear on the Extract.



**NATIONAL NATIVE
TITLE TRIBUNAL**

Extract from the National Native Title Register

Federal Court Number: NSD6004/98

Federal Court Name: Darug People

Determining Body: Federal Court of Australia

Determination Date: 07/09/2004

Additional Information:

Not Applicable

Matters Determined:

Native title does not exist in the determination area being Lot 7016 in Deposited Plan 1067986 as per the attached registered plan.

Attachments:

1. Plan of Crown Land showing former artificial ID - 1 page - A4 - attached to the NNTR - 15/09/2004

(If not attached, these are available from the National Native Title Tribunal by phoning freecall 1800 640 501)

End of Entry



Searching the NNTT Registers in New South Wales

Search service

On request the National Native Title Tribunal will search its public registers for you. A search may assist you in finding out whether any native title applications (claims), determinations or agreements exist over a particular area of land or water.

In New South Wales native title cannot exist on privately owned land including family homes or farms.

What information can a search provide?

A search can confirm whether any applications, agreements or determinations are registered in a local government area. Relevant information, including register extracts and application summaries, will be provided.

In NSW because we cannot search the registers in relation to individual parcels of land we search by local government area.

Most native title applications do not identify each parcel of land claimed. They have an external boundary and then identify the areas not claimed within the boundary by reference to types of land tenure e.g., freehold, agricultural leasehold, public works.

What if the search shows no current applications?

If there is no application covering the local government area this only indicates that at the time of the search either the Federal Court had not received any claims in relation to the local government area or the Tribunal had not yet been notified of any new native title claims.

It does not mean that native title does not exist in the area.

Native title may exist over an area of land or waters whether or not a claim for native title has been made.

Where the information is found

The information you are seeking is held in three registers and on an applications database.

National Native Title Register

The National Native Title Register contains determinations of native title by the High Court, Federal Court and other courts.

Register of Native Title Claims

The Register of Native Title Claims contains applications for native title that have passed a registration test.

Registered claims attract rights, including the right to negotiate about some types of proposed developments.

Register of Indigenous Land Use Agreements

The Register of Indigenous Land Use Agreements contains agreements made with people who hold or assert native title in an area.

The register identifies development activities that have been agreed by the parties.

Application summaries

An application summary contains a description of the location, content and status of a native title claim.

This information may be different to the information on the Register of Native Title Claims, e.g., because an amendment has not yet been tested.

How do you request a search?

A search request form is available on the Tribunal's web site at:
<http://www.nntt.gov.au/registers/search.html>
This form says how much searches cost.
Mail, fax or email your request to the Tribunal's Sydney registry, identifying the local government area/s you want searched.

Email: SydneySearch@nntt.gov.au

Fax: (02) 9233 5613

Address: GPO Box 9973, Sydney NSW 2001

Phone: (02) 9235 6300



11-13 Mansfield Street
Glebe NSW 2037
PO Box 112, Glebe NSW 2037
☎ 02 9562 6327 ☎ 02 9562 6350

Mr Darryl Thiedeke
Hy-Tec Industries T/A hy-Tec Concrete & Aggregates
PO Box 6770
Silverwater NSW 1811

3 November 2010

Dear Darryl,

Re: Request - Search for Registered Aboriginal Owners

I refer to your letter dated 26 October 2010 regarding an Aboriginal Cultural Heritage and Archaeological Assessment at the Tinda Park Quarry north of Windsor, NSW.

I have searched the Register of Aboriginal Owners and the subject land does not appear to have Registered Aboriginal Owners pursuant to Division 3 of the *Aboriginal Land Rights Act 1983*.

I trust you are in contact with the Metropolitan Local Aboriginal Land Council. The land council may be able to assist you with information and contact details for other interested groups.

Regards,

Courtney Field
Assistant Research Officer
Office of the Registrar, *Aboriginal Land Rights Act 1983*

Your Ref:
Our Ref: DOC10/48720

Contact: Miranda Morton (02) 9995 6836

Attn: Darryl Thiedeke
Hy-Tec Industries T/A Hy-Tec Concrete and Aggregates
PO Box 6770
SILVERWATER NSW 1811

Dear Mr Thiedeke,

RE: DECCW ABORIGINAL CULTURAL HERITAGE CONSULTATION REQUIREMENTS FOR PROPONENTS 2010: Tinda Creek, Hawkesbury LGA

Thank you for your letter 26/10/2010 to the Department of Environment, Climate Change and Water (DECCW) regarding the above matter.

Before making an application for the issue of an Aboriginal Heritage Impact Permit, the proposed applicant must carry out an Aboriginal community consultation process in accordance with the National Parks and Wildlife Regulation 2009 and completed to the stage described in subclause 80C.

Please find attached the list of Aboriginal stakeholders known to DECCW that may have an interest in the project.

Further, receipt of this information does not remove the requirement of a proponent/consultant to advertise in local print media and contact other bodies seeking interested Aboriginal parties. Consultation with Aboriginal stakeholders must be in accordance with the *Aboriginal Cultural Heritage Consultation Requirements for Proponents 2010* which can be found on the DECCW public website by accessing the following link:

<http://www.environment.nsw.gov.au/resources/cultureheritage/commconsultation/09781ACHconsultreg.pdf>

Please note that these requirements replace the *Interim Community Consultation Requirements for Applicants, December 2004*.



If you wish to discuss any of the above matters further please contact Miranda Morton, Aboriginal Heritage Planning Officer, on (02) 9995 6836.

Yours sincerely,

A handwritten signature in cursive script, followed by the date "3/11/10".

Lou Ewins
Manager
Planning and Aboriginal Heritage
Metropolitan Branch
Environmental Protection & Regulation

Aboriginal Stakeholders that may have an interest in the Western Sydney area and surrounds

Darug Custodial Aboriginal Corporation	Leanne Watson	02 4577 5181 / 0415 770 163	PO Box 81, Windsor NSW 2756
Darug Tribal Aboriginal Corporation	Sandra Lee	02 9622 4081	PO Box 441, Blacktown NSW 2148
Darug Aboriginal Cultural Heritage Assessments	Gordon Morton	02 4567 7421 or 0422 865 831	90 Hermitage Rd, Kurrajong Hills NSW 2758
Darug Land Observations	Gordon Workman	0415 663 763/ fax 02 9831 8868	PO Box 571, Plumpton, NSW 2761
Darug Aboriginal Land Care Inc	Des Dyer	0408 360 814	18a Perigee Close, Doonside 2767
Yarrawalk/Tocomwall	Scott Franks (Wonnarua nation)	0404 171 544	PO Box 76, Caringbah NSW 1495
Gunjeewong Cultural Heritage Aboriginal Corporation	Cherie Carroll Turrise	(02) 6355 5673	Lot 9, Sunny Corner Road, Portland NSW, 2847 * Cherie is Ngunnawal Elder however lived in the Western Sydney area during her childhood. She recognises she is not from the area but has associations.
Deerubbin LALC	Kevin Cavanagh	(02) 98322457	PO Box 3184 Mt Druitt NSW 2770

Hawkesbury City Council



16 November 2010

Umwelt Environmental Consultants
PO Box 838
TORONTO NSW 2283

306 George Street
(PO Box 146)
Windsor NSW 2756
Phone: 02 4560 4444
Facsimile: 02 4560 4400
DX: 8801 Windsor

Attention: Peter Jamieson

Dear Mr Jamieson,

Aboriginal Party Consultation in Relation to an Aboriginal Cultural Heritage and Archaeological Assessment as Part of an Environmental Assessment for the Expansion of Sand Extraction at the Tinda Park Quarry - 6102 Putty Road Mellong

Reference is made to your correspondence dated 26 October 2010 in relation to information that Council may have in relation to Aboriginal knowledge holders having regard to cultural heritage sites/objects situated within the proposed sand extraction area associated with the Tinda Park Quarry.

I wish to advise that the Council has the following contact details for the relevant Local Aboriginal Land Council:

Metropolitan Local Aboriginal Land Council

*36-38 George Street
REDFERN NSW 2016*

*PO BOX 1103
STRAWBERRY HILLS NSW 2012*

*Phone: (02) 8394 9666
Facsimile: (02) 8394 9733
Email: pmorris@metrolalc.org.au*

If you have any questions please contact me on direct line (02) 4560 4574.

Yours faithfully

A handwritten signature in black ink, appearing to read 'Richard Nej'.

Richard Nej
Town Planning Coordinator

Where people make the difference.

Our Ref: 1731B/PJ/PJ/AR/110113

13 January 2011

Lou Ewins
Manager Planning and Aboriginal Heritage
Metropolitan Branch
PO Box 668
PARAMATTA NSW 2124

Dear Lou

Re: Registered Aboriginal Parties for Tinda Creek Expansion

In accordance with the Department of Environment, Climate Change and Water (DECCW) Aboriginal Cultural Heritage Consultation Requirements for Proponents (ACHCR's) this letter is to notify DECCW of the Aboriginal parties who have registered an interest in the Tinda Creek Expansion project.

Letters were sent to those Aboriginal parties identified by DECCW on 3 November 2010 as possibly having an interest in the project. Other parties were identified in communication with the Native Title Services Corporation Limited (NTSCORP Limited), Hawkesbury-Nepean Catchment Management Authority and through newspaper advertisements.

The final closing date to register an interest in the project was Wednesday 15 December 2010. As of the close of business 17 December 2010, the following Aboriginal parties listed in **Table 1** had registered an interest in the project.

Table 1 – Registered Aboriginal Parties

Aboriginal Stakeholder Group	Contact	Contact Details
Catchment Officer (Aboriginal Communities) Hawkesbury-Nepean CMA	John Lennis	PO Box 4515 Penrith Westfields NSW 2750 02 4725 3046 John.lennis@cma.nsw.gov.au
Darug Aboriginal Cultural Heritage Assessments	Gordon Morton	90 Hermitage Rd Kurrajong Hills NSW 2758 02 4567 7421
Darug Land Observations	Gordon Workman	PO Box 571 Plumpton NSW 2761 0415 663 763
Metropolitan Local Aboriginal Land Council	Paul Morris	PO Box 1103 Strawberry Hills NSW 2012 02 8394 9666
Yarrawalk	Scott Franks/Barry McTaggart	913 Wollombi Road Owendale Park Broke NSW 2330

The DECCW response to Hy-Tec Industries' notification letter included the Deerubbin Local Aboriginal Land Council (DLALC) as the relevant Land Council to contact. The DLALC were not contacted for this project however, as the project area is located entirely within the Metropolitan Local Aboriginal Land Council boundary (refer to **Figure 1**).

In a letter received on 12 January 2011, Gunjeewong Cultural Heritage Aboriginal Corporation also registered an interest in the project, and any additional late registrants will be provided with all information provided up to the date of their registration, and will be included in all consultation from the date of their registration.

Aboriginal Stakeholder Group	Contact	Contact Details*
Gunjeewong Cultural Heritage Aboriginal Corporation	Cherie Carroll Turrise	1 Bellvue Place Portland NSW 2847 6355 4110

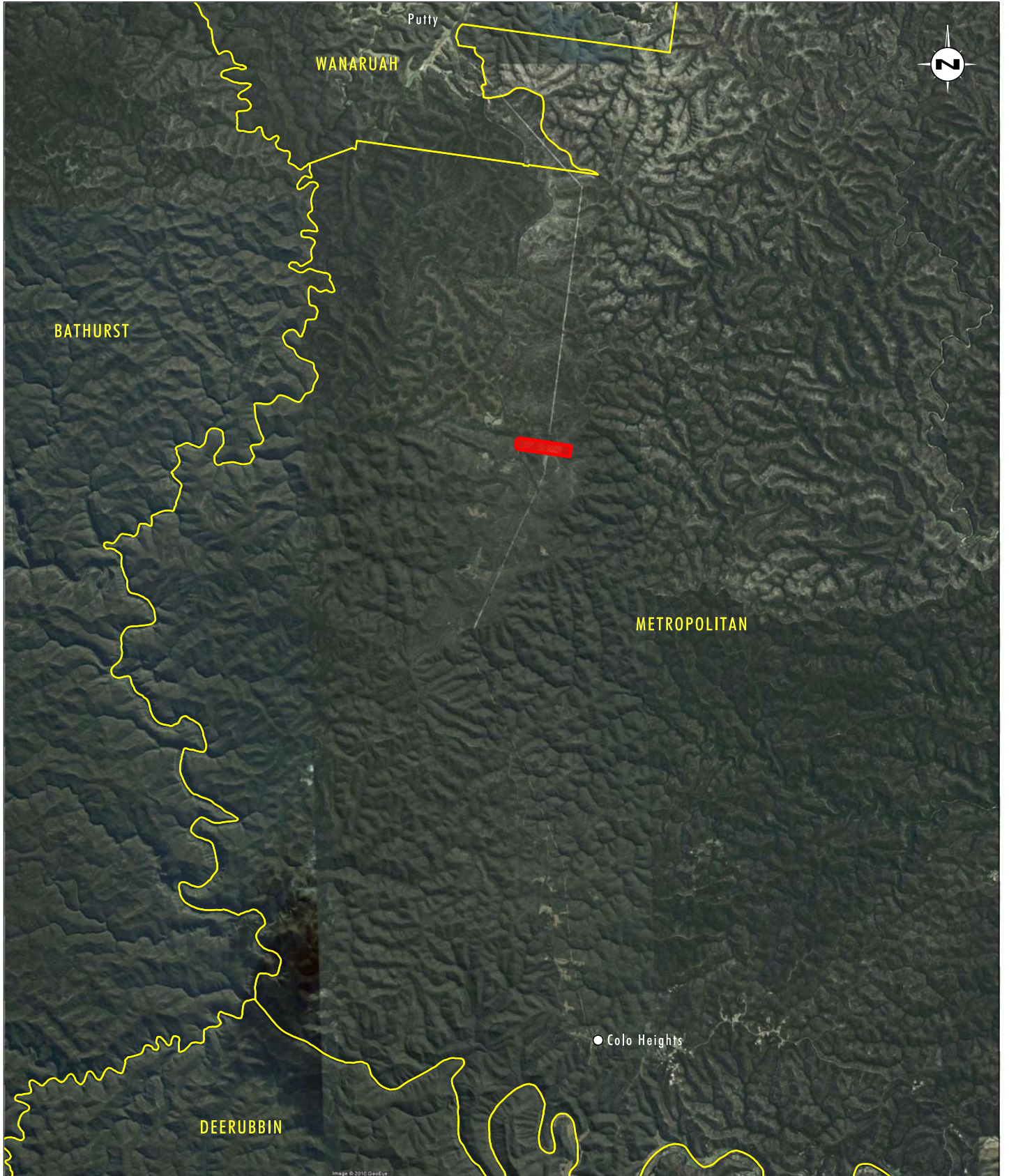
* Please note the changed contact details for this Aboriginal Stakeholder Group

Please contact me on (02) 4950 5322 if there are any questions regarding this correspondence.

Yours faithfully



Amanda Reynolds
Archaeologist



Source: LPI NSW (2000)

0 2.5 5.0 10.0 km
1:200 000

Legend



-  Project Area (Lot 2 DP 628806)
-  Local Aboriginal Land Council Boundary

FIGURE 1

**Local Aboriginal Land Council Boundaries
in the vicinity of the Project Area**

Our Ref: 1731B/PJ/PJ/AR/110113

13 January 2011

Paul Morris
Metropolitan Local Aboriginal Land Council
PO Box 1103
STRAWBERRY HILLS NSW 2012

Dear Paul

Re: Registered Aboriginal Parties for Tinda Creek Expansion

In accordance with the Department of Environment, Climate Change and Water (DECCW) Aboriginal Cultural Heritage Consultation Requirements for Proponents (ACHCRs) this letter is to notify the Metropolitan Local Aboriginal Land Council (MLALC) of Aboriginal parties who have registered an interest in the Tinda Creek Expansion project.

Letters were sent to those Aboriginal parties identified by DECCW on 3 November 2010 as possibly having an interest in the project. Other parties were identified in communication with the Native Title Services Corporation Limited (NTSCORP Limited), Hawkesbury-Nepean Catchment Management Authority and through newspaper advertisements.

The final closing date to register an interest in the project was Wednesday 15 December 2010. As of close of business on 17 December 2010, the following Aboriginal parties listed in **Table 1** had registered an interest in the project.

Table 1 – Registered Aboriginal Parties

Aboriginal Stakeholder Group	Contact	Contact Details
Catchment Officer (Aboriginal Communities) Hawkesbury-Nepean CMA	John Lennis	PO Box 4515 Penrith Westfields NSW 2750 02 4725 3046 John.lennis@cma.nsw.gov.au
Darug Aboriginal Cultural Heritage Assessments	Gordon Morton	90 Hermitage Rd Kurrajong Hills NSW 2758 02 4567 7421
Darug Land Observations	Gordon Workman	PO Box 571 Plumpton NSW 2761 0415 663 763
Metropolitan Local Aboriginal Land Council	Paul Morris	PO Box 1103 Strawberry Hills NSW 2012 02 8394 9666
Yarrawalk	Scott Franks/ Barry McTaggart	913 Wollombi Road Owendale Park Broke NSW 2330

The DECCW response to Hy-Tec Industries' notification letter included the Deerubbin Local Aboriginal Land Council (DLALC) as the relevant Land Council to contact. The DLALC were not contacted for this project however, as the project area is located entirely within the Metropolitan Local Aboriginal Land Council boundary (refer to **Figure 1**).

In a letter received on 12 January 2011, Gunjeewong Cultural Heritage Aboriginal Corporation also registered an interest in the project. Any additional late registrants will be provided with all information provided up to the date of their registration, and will be included in all consultation from the date of their registration.

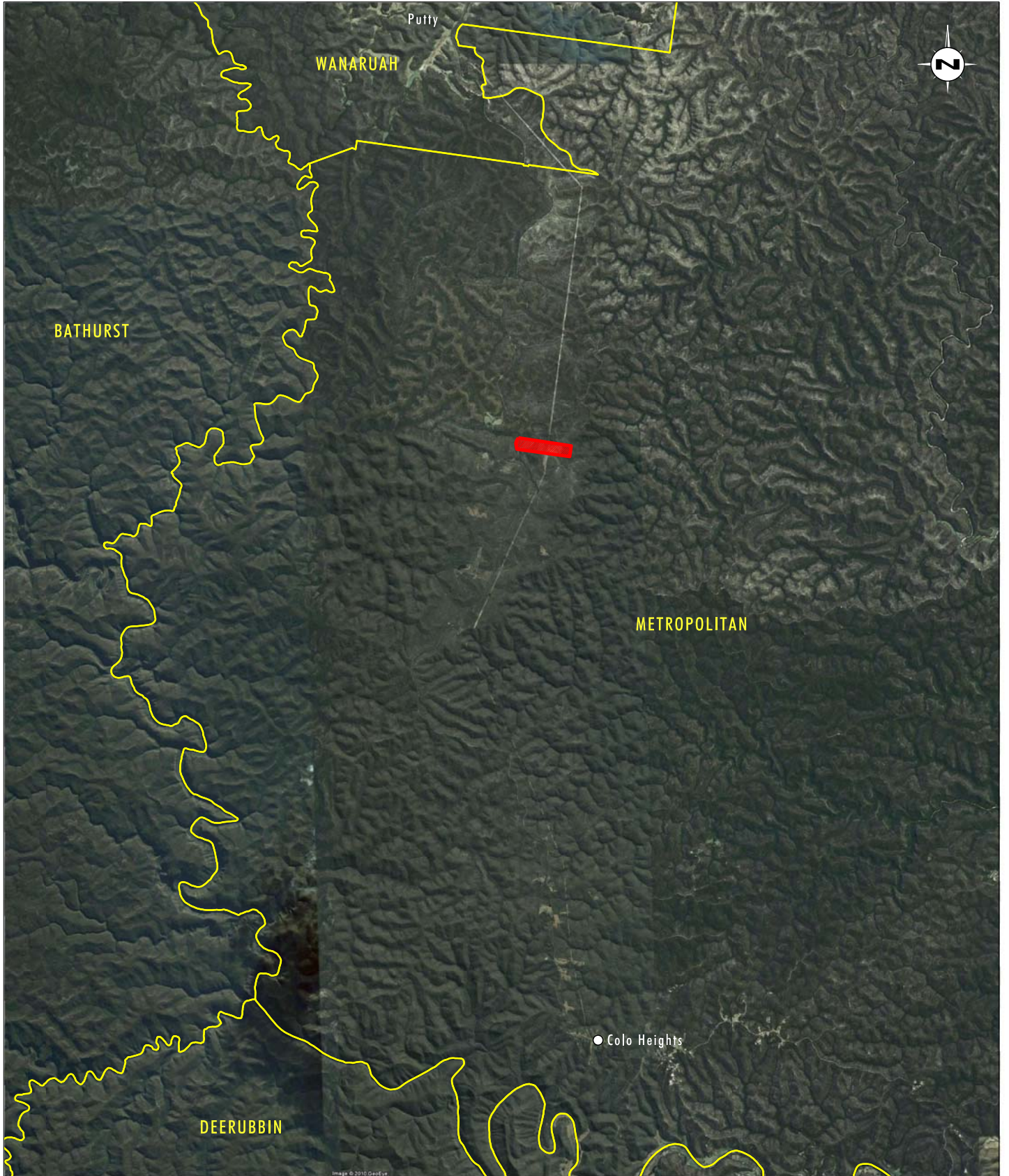
Aboriginal Stakeholder Group	Contact	Contact Details*
Gunjeewong Cultural Heritage Aboriginal Corporation	Cherie Carroll Turrise	1 Bellvue Place Portland NSW 2847 6355 4110

Please contact me on (02) 4950 5322 if there are any questions regarding this correspondence.

Yours faithfully



Amanda Reynolds
Archaeologist



Legend



-  Project Area (Lot 2 DP 628806)
-  Local Aboriginal Land Council Boundary

FIGURE 1

**Local Aboriginal Land Council Boundaries
in the vicinity of the Project Area**

Our Ref: 1731B/PJ/PJ/AR/280111

28 January 2011

Lou Ewins
Manager Planning and Aboriginal Heritage
Metropolitan Branch
PO Box 668
PARAMATTA NSW 2124

Dear Lou

Re: Registered Aboriginal Parties for Tinda Creek Expansion

In accordance with the Department of Environment, Climate Change and Water (DECCW) Aboriginal Cultural Heritage Consultation Requirements for Proponents (ACHCR's) this letter is to notify DECCW of the Aboriginal parties who have registered an interest in the Tinda Creek Expansion project.

This letter is being sent in addition to the letter sent dated 13 January 2011, notifying DECCW of the registered Aboriginal parties for the Tinda Creek Expansion project. Following the letter of 13 January 2011, two additional registrations for the project, Darug Tribal Aboriginal Corporation and Darug Custodial Aboriginal Corporation have been received. These were received by Hy-Tec prior to registration closing on 15 December 2010, however a clerical error saw that they were not received by me until today.

The complete list of registered Aboriginal Parties to date is shown in **Table 1**.

Table 1 – Registered Aboriginal Parties

Aboriginal Stakeholder Group	Contact	Contact Details
Catchment Officer (Aboriginal Communities) Hawkesbury-Nepean CMA	John Lennis	PO Box 4515 Penrith Westfields NSW 2750 02 4725 3046 John.lennis@cma.nsw.gov.au
Darug Aboriginal Cultural Heritage Assessments	Gordon Morton	90 Hermitage Rd Kurrajong Hills NSW 2758 02 4567 7421
Darug Custodial Aboriginal Corporation	Leanne Watson	PO Box 81 Windsor NSW 2756 02 4577 5181
Darug Land Observations	Gordon Workman	PO Box 571 Plumpton NSW 2761 0415 663 763
Darug Tribal Aboriginal Corporation	Sandra Lee	PO Box 441 Blacktown NSW 2148 02 9622 4081
Gunjeewong Cultural Heritage Aboriginal Corporation	Cherie Carroll Turrise	1 Bellvue Place Portland NSW 2847 6355 4110

Table 1 – Registered Aboriginal Parties (cont)

Aboriginal Stakeholder Group	Contact	Contact Details
Metropolitan Local Aboriginal Land Council	Paul Morris	PO Box 1103 Strawberry Hills NSW 2012 02 8394 9666
Yarrawalk	Scott Franks/Barry McTaggart	913 Wollombi Road Owendale Park Broke NSW 2330

All registered Aboriginal parties have been provided with all of the relevant project information to date. Please update your records for this project accordingly and apologies for any inconvenience this may cause.

Please contact me on (02) 4950 5322 if there are any questions regarding this correspondence.

Yours faithfully



Amanda Reynolds
Archaeologist

Our Ref: 1731B/PJ/PJ/AR/280111

28 January 2011

Paul Morris
 Metropolitan Local Aboriginal Land Council
 PO Box 1103
 STRAWBERRY HILLS NSW 2012

Dear Paul

Re: Registered Aboriginal Parties for Tinda Creek Expansion

In accordance with the Department of Environment, Climate Change and Water (DECCW) Aboriginal Cultural Heritage Consultation Requirements for Proponents (ACHCR's) this letter is to notify DECCW of the Aboriginal parties who have registered an interest in the Tinda Creek Expansion project.

This letter is being sent in addition to the letter sent dated 13 January 2011, notifying DECCW of the registered Aboriginal parties for the Tinda Creek Expansion project. Following the letter of 13 January 2011, two additional registrations for the project, Darug Tribal Aboriginal Corporation and Darug Custodial Aboriginal Corporation have been received. These were received by Hy-Tec prior to registration closing on 15 December 2010, however a clerical error saw that they were not received by me until today.

The complete list of registered Aboriginal Parties is shown in **Table 1**.

Table 1 – Registered Aboriginal Parties

Aboriginal Stakeholder Group	Contact	Contact Details
Catchment Officer (Aboriginal Communities) Hawkesbury-Nepean CMA	John Lennis	PO Box 4515 Penrith Westfields NSW 2750 02 4725 3046 John.lennis@cma.nsw.gov.au
Darug Aboriginal Cultural Heritage Assessments	Gordon Morton	90 Hermitage Rd Kurrajong Hills NSW 2758 02 4567 7421
Darug Custodial Aboriginal Corporation	Leanne Watson	PO Box 81 Windsor NSW 2756 02 4577 5181
Darug Land Observations	Gordon Workman	PO Box 571 Plumpton NSW 2761 0415 663 763
Darug Tribal Aboriginal Corporation	Sandra Lee	PO Box 441 Blacktown NSW 2148 02 9622 4081
Gunjeewong Cultural Heritage Aboriginal Corporation	Cherie Carroll Turrise	1 Bellvue Place Portland NSW 2847 6355 4110

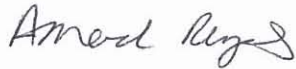
Table 1 – Registered Aboriginal Parties (cont)

Aboriginal Stakeholder Group	Contact	Contact Details
Metropolitan Local Aboriginal Land Council	Paul Morris	PO Box 1103 Strawberry Hills NSW 2012 02 8394 9666
Yarrawalk	Scott Franks/Barry McTaggart	913 Wollombi Road Owendale Park Broke NSW 2330

All registered Aboriginal parties have been provided with all of the relevant project information to date. Please update your records for this project accordingly and apologies for any inconvenience this may cause.

Please contact me on (02) 4950 5322 if there are any questions regarding this correspondence.

Yours faithfully



Amanda Reynolds
Archaeologist